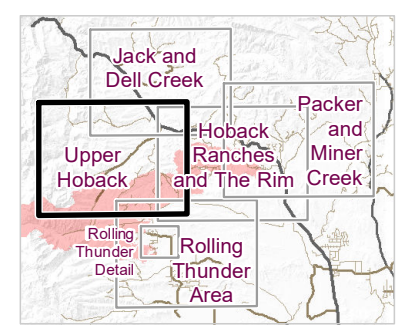


Roosevelt Fire

Upper Hoback Operations Map
 September 24, 2018
 WY-BTF-001823

approximately 39,283 acres
 on September 22, 2129 hr

- Division Break
- Incident Command Post
- Helibase
- Drop Point
- Repeater
- Value at Risk
- Dip Site
- Water Source
- Water Tank
- Pump
- Gate
- Lookout
- Spot Fire
- Natural Gas Pumphouse
- Uncontrolled Fire Edge
- Completed Line
- Completed Dozer Line
- Road as Completed Line
- Completed Hand Line
- Active Burnout
- Sage Grouse Leaks**
- Heavy Equipment and Retardant Avoidance Area
- Land Ownership**
- Private Land
- Forest Service
- USFS Forest/District Boundary
- Roads**
- US Highway
- WY Highway
- County
- Local Road
- USFS Road
- Trail



Roosevelt Maps

bit.ly/rooseveltfire