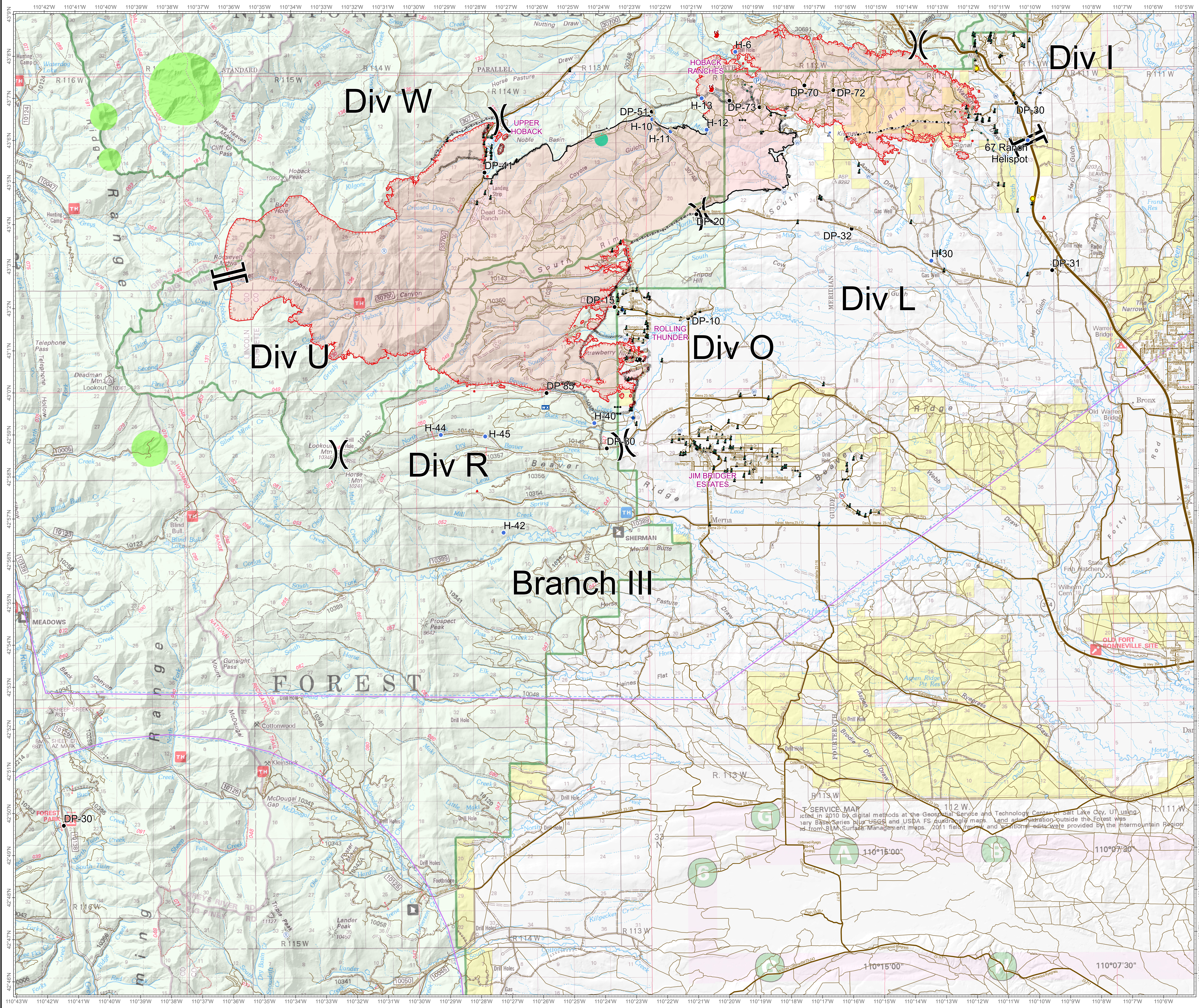


**Roosevelt Fire**  
 WY-BTF-001823  
**Division R**  
 September 25, 2018

approximately 49,805 acres  
 on September 24, 2202 hr

- Branch Break
- Division Break
- Drop Point
- Helibase
- Helispot
- Incident Command Post
- Lookout
- Pump
- Repeater
- Dip Site
- Value at Risk
- Water Source
- Water Tank
- Fire Location
- Natural Gas Pumphouse
- Uncontrolled Fire Edge
- Completed Line
- Completed Dozer Line
- Completed Hand Line
- Road as Completed Line
- Active Burnout
- Temporary Flight Restriction
- Fuel Break
- Sage Grouse Leks**
- Heavy Equipment and Retardant Avoidance Area
- T and E Plant - Payson's Bladderpod**
- Heavy Equipment Avoidance Area
- Roads**
- US Highway
- WY Highway
- County
- Local Road
- USFS Road
- Trail



**SERVICE MAP**  
 created in 2010 by digital methods at the Geospatial Service and Technology Center, Salt Lake City, UT, using  
 primary Base Series plus USGS and USDA FS quadrangle maps. Land administration outside the Forest was  
 derived from BLM Surface Management maps. 2011 field review and additional edits were provided by the Intermountain Region.



bit.ly/rooseveltfire