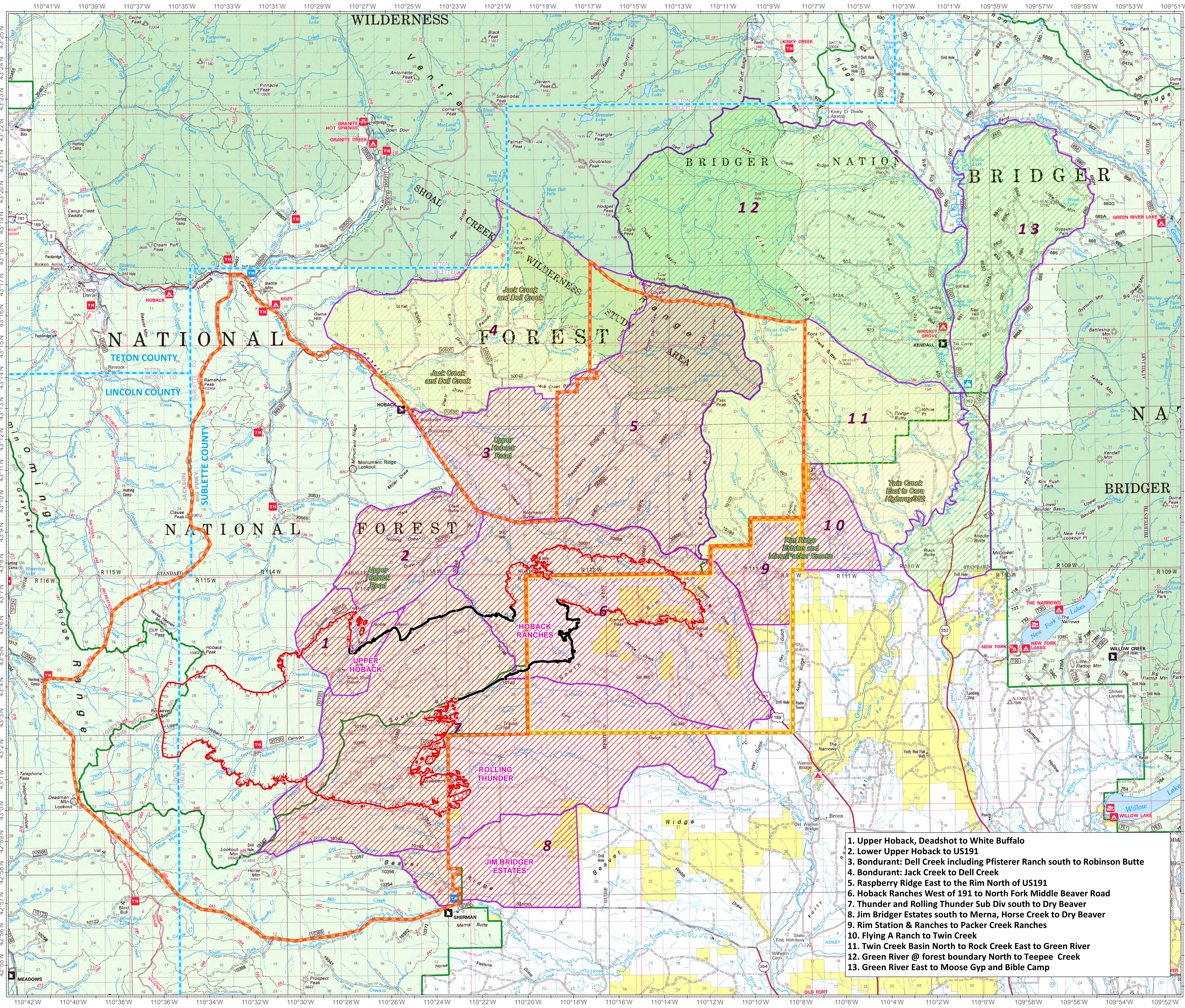


Roosevelt Fire WY-BTF-001823 Evacuation September 24, 2018

approximately 48,348 acres
on September 23, 2123 hr

- Uncontrolled Fire Edge
 - Completed Line
 - USFS Closure Area as of September 22
 - BLM Closure Area as of September 20
 - County Boundary
 - Forest Ranger District Boundary
- Evacuation Areas**
- Status**
- Ready
 - Set
 - Go



1. Upper Hoback, Deadshot to White Buffalo
2. Lower Upper Hoback to US191
3. Bondurant: Dell Creek including Pfisterer Ranch south to Robinson Butte
4. Bondurant: Jack Creek to Dell Creek
5. Raspberry Ridge East to the Rim North of US191
6. Hoback Ranches West of 191 to North Fork Middle Beaver Road
7. Thunder and Rolling Thunder Sub Div south to Dry Beaver
8. Jim Bridger Estates south to Merna, Horse Creek to Dry Beaver
9. Rim Station & Ranches to Packer Creek Ranches
10. Flying A Ranch to Twin Creek
11. Twin Creek Basin North to Rock Creek East to Green River
12. Green River @ forest boundary North to Teepee Creek
13. Green River East to Moose Gyp and Bible Camp



Great Basin Team 6 GIS
Author: mpanunto
Date: 20180924 1649 hr
File: Evac_30483_jend_2018_Rooseult_WYBTF001823_20180924.mxd
Lat-Long Grid Ticks: 1 minute Interval
Projection: NAD83 UTM Zone12

