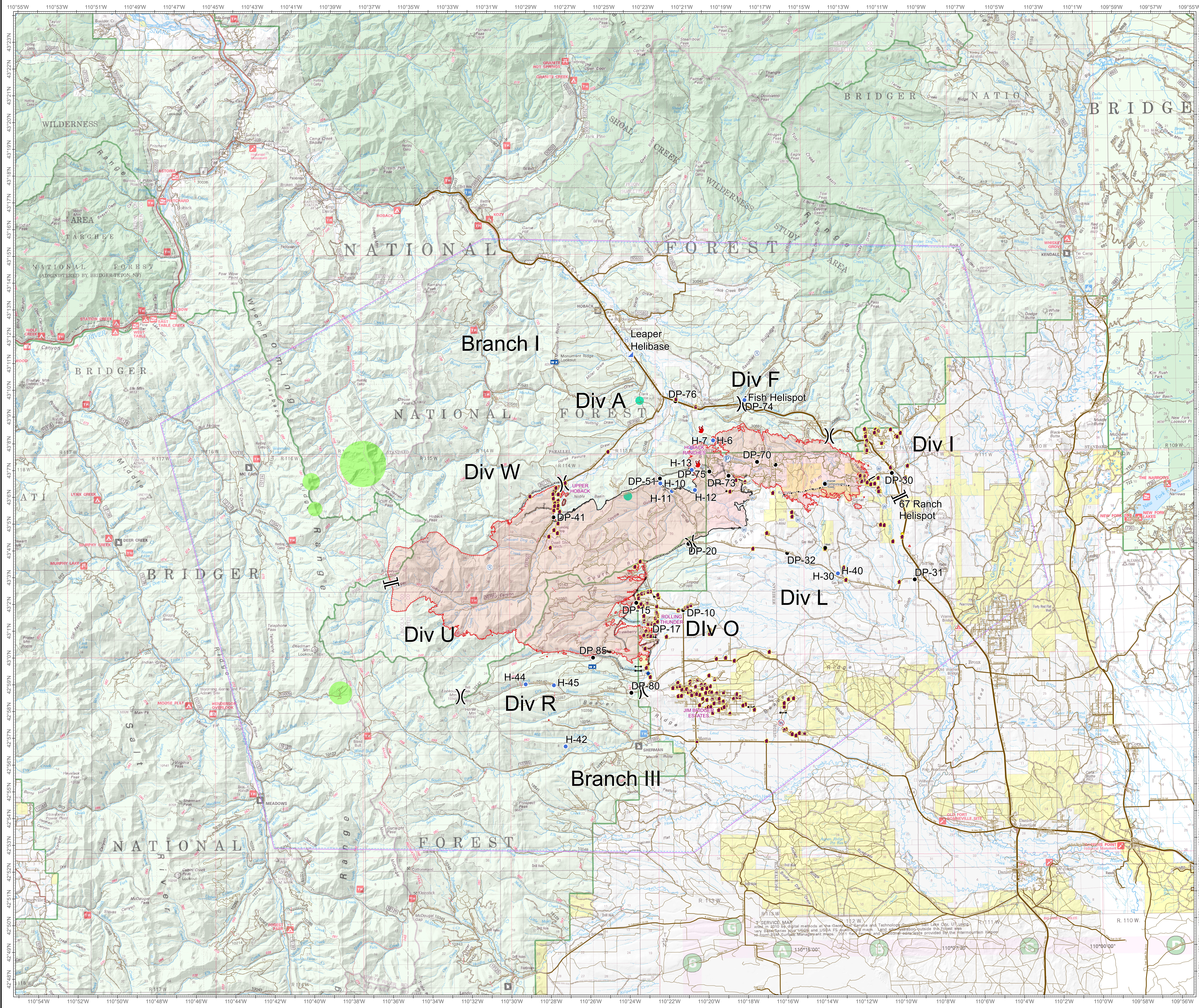


Roosevelt Fire
 WY-BTF-001823
Planning Map
 September 25, 2018

approximately 49,805 acres
 on September 24, 2202 hr



- Branch Break
- Division Break
- Drop Point
- Helibase
- Helispot
- Incident Command Post
- Lookout
- Pump
- Repeater
- Dip Site
- Value at Risk
- Water Source
- Water Tank
- Fire Location
- Natural Gas Pumphouse
- Uncontrolled Fire Edge
- Completed Line
- Completed Dozer Line
- Completed Hand Line
- Road as Completed Line
- Active Burnout
- Temporary Flight Restriction
- Fuel Break
- Sage Grouse Leaks**
- Heavy Equipment and Retardant Avoidance Area
- T and E Plant - Payson's Bladderpod Avoidance Area
- Heavy Equipment Avoidance Area
- Roads**
- US Highway
- WY Highway
- County
- Local Road
- USFS Road
- Trail



bit.ly/rooseultfire

Great Basin Team GIS
 Author: mpanunto
 Date: 20180925 1307 hr
 File: P0_planning_35448_land_2018_Roosevelt_WYBTF001823_bhamden.mxd
 Lat-Long Grid Ticks: 1 minute interval
 Projection: NAD83 UTM Zone12

