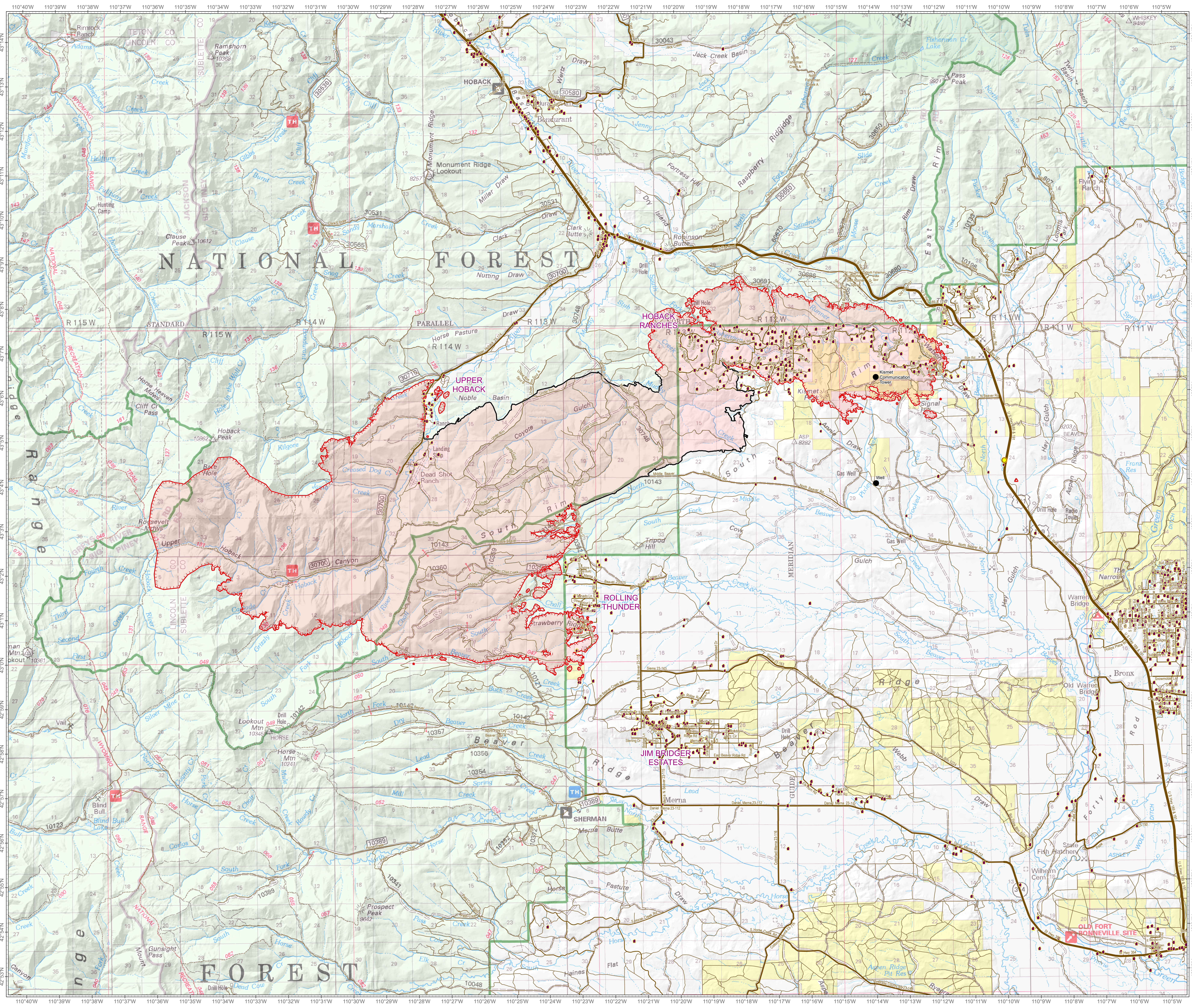


Roosevelt Fire
 WY-BTF-001823
Planning Map
 September 25, 2018

approximately 49,805 acres
 on September 24, 2202 hr



- Value at Risk
- - - Uncontrolled Fire Edge
- Completed Line
- US Highway
- WY Highway
- County
- Local Road
- USFS Road
- Land Ownership**
- Private Land
- Forest Service
- Bureau of Land Management
- State



Great Basin Team GIS
 Author: Robert
 Date: 20180925 1247 hr
 File: P:_planning_38448_land_2018_Roosevelt_WYBTF001823_bhamden.mxd
 Lat-Long Grid Ticks: 1 minute interval
 Projection: NAD83 UTM Zone12