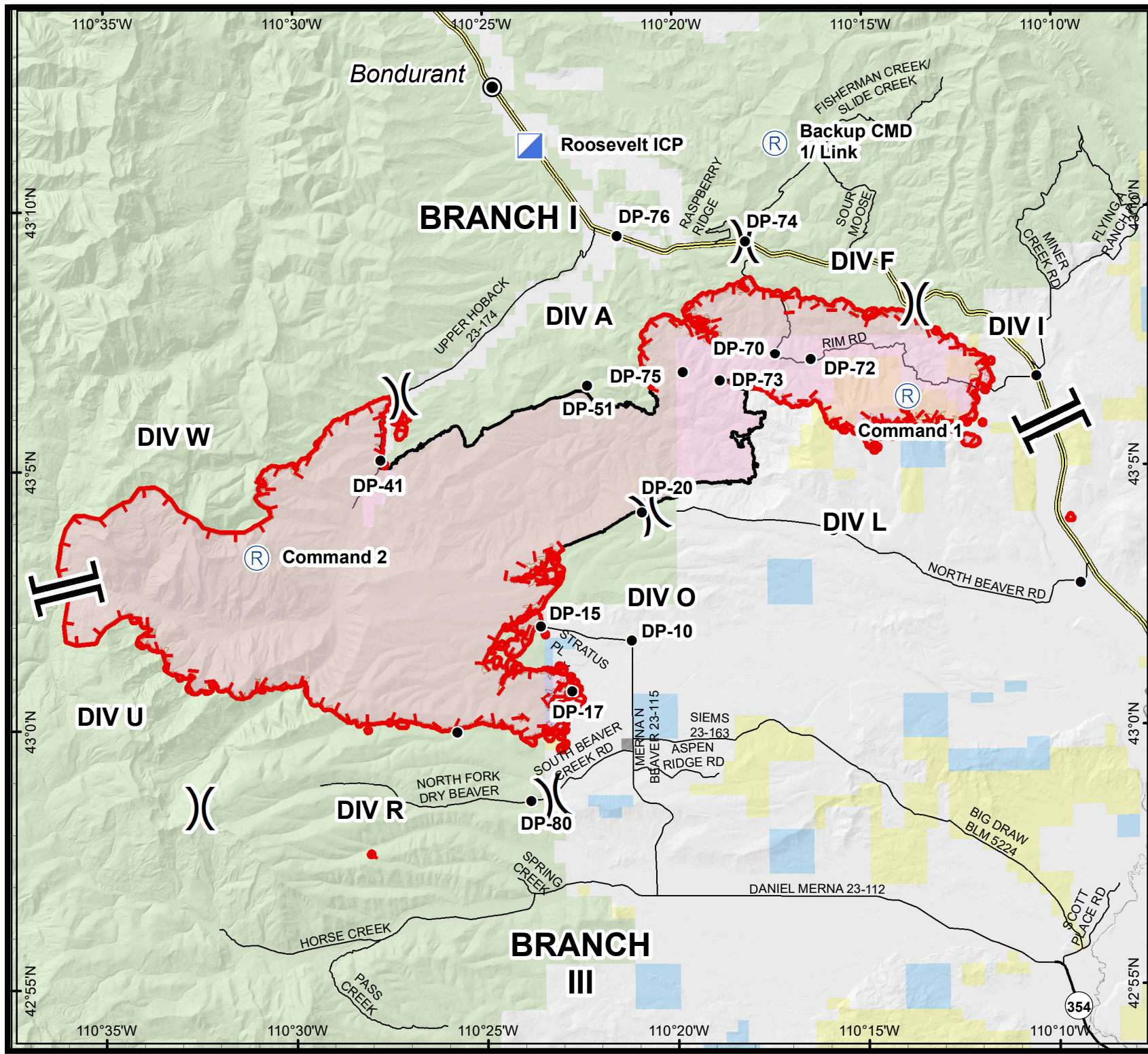


# Roosevelt Fire

WY-BTF-001823

## Transportation Map

Sept. 25, 2018  
49,805 acres



- Drop Point
- Incident Command Post
- Ⓡ Repeater
- Completed Line
- ) Division Break
- ┌ Uncontrolled Fire Edge
- Forest Service
- Bureau of Land Management
- Private
- State



N  
E  
S  
W

Great Basin Team 6 GIS  
 author: lkobelt  
 date: 20180925 0901 hr

Projection: NAD83 UTM Zone 12 N  
 Lat-Long Grid Ticks: 5' minute interval

0 0.5 1 2 3  
 Miles