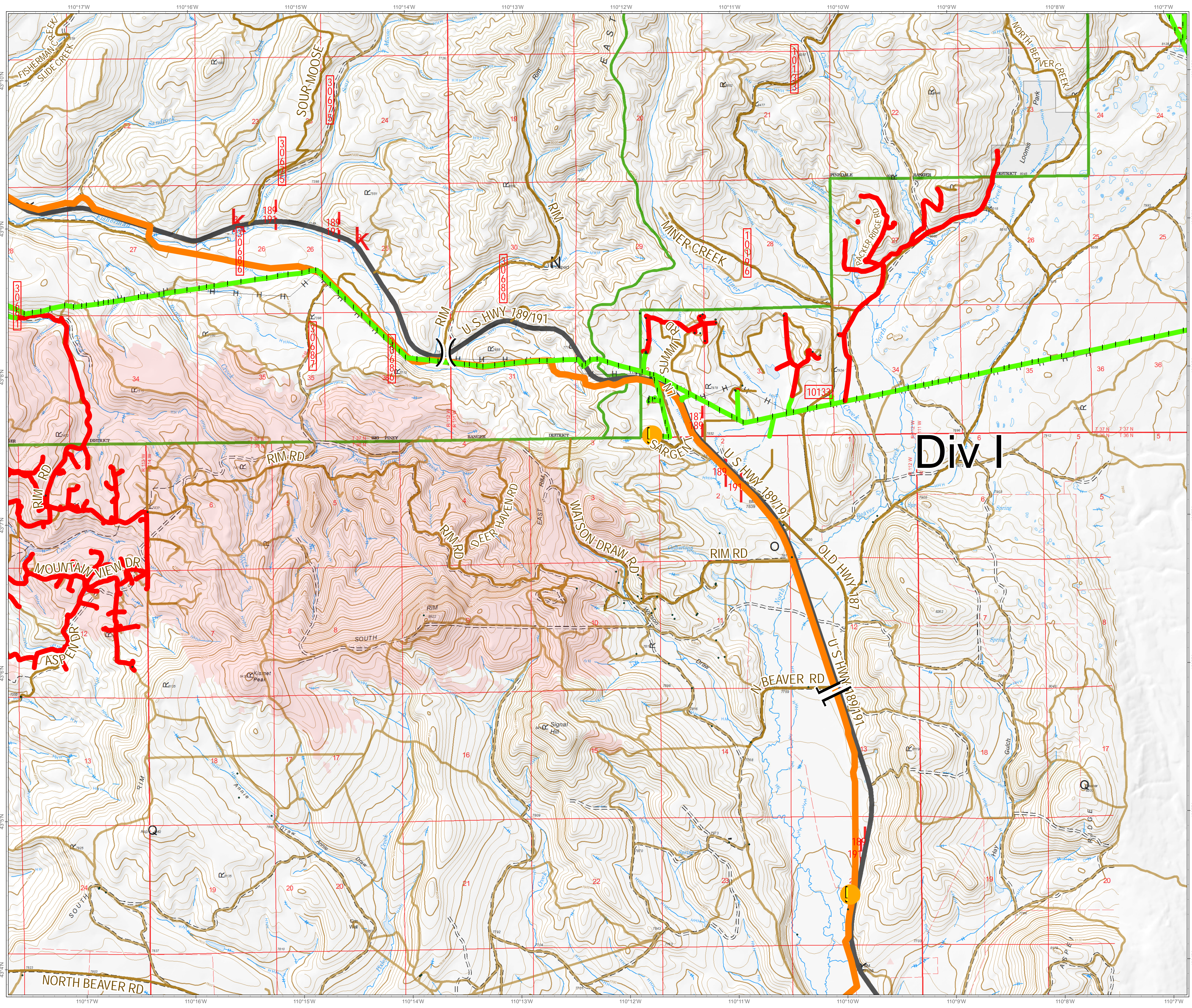


Roosevelt Fire  
WY-BTF-001823  
**Utilities Div I**  
September 25, 2018

approximately 49,805 acres  
on September 24, 2202 hr

- Natural Gas Pumphouse
- Pole
- Gas
- Electrical**
- Grade**
- Above
- Below



**Div I**

Great Basin Team 6 GIS  
Author: bilalva  
Date: 20180925 12:39 hr  
File: Utilities\_Hazards\_DIV\_A\_36x48\_land\_2018\_Roosevelt\_WYBTF001823\_2.mxd  
Lat-Long Grid Ticks: 1' minute interval  
Projection: NAD83 UTM Zone 12