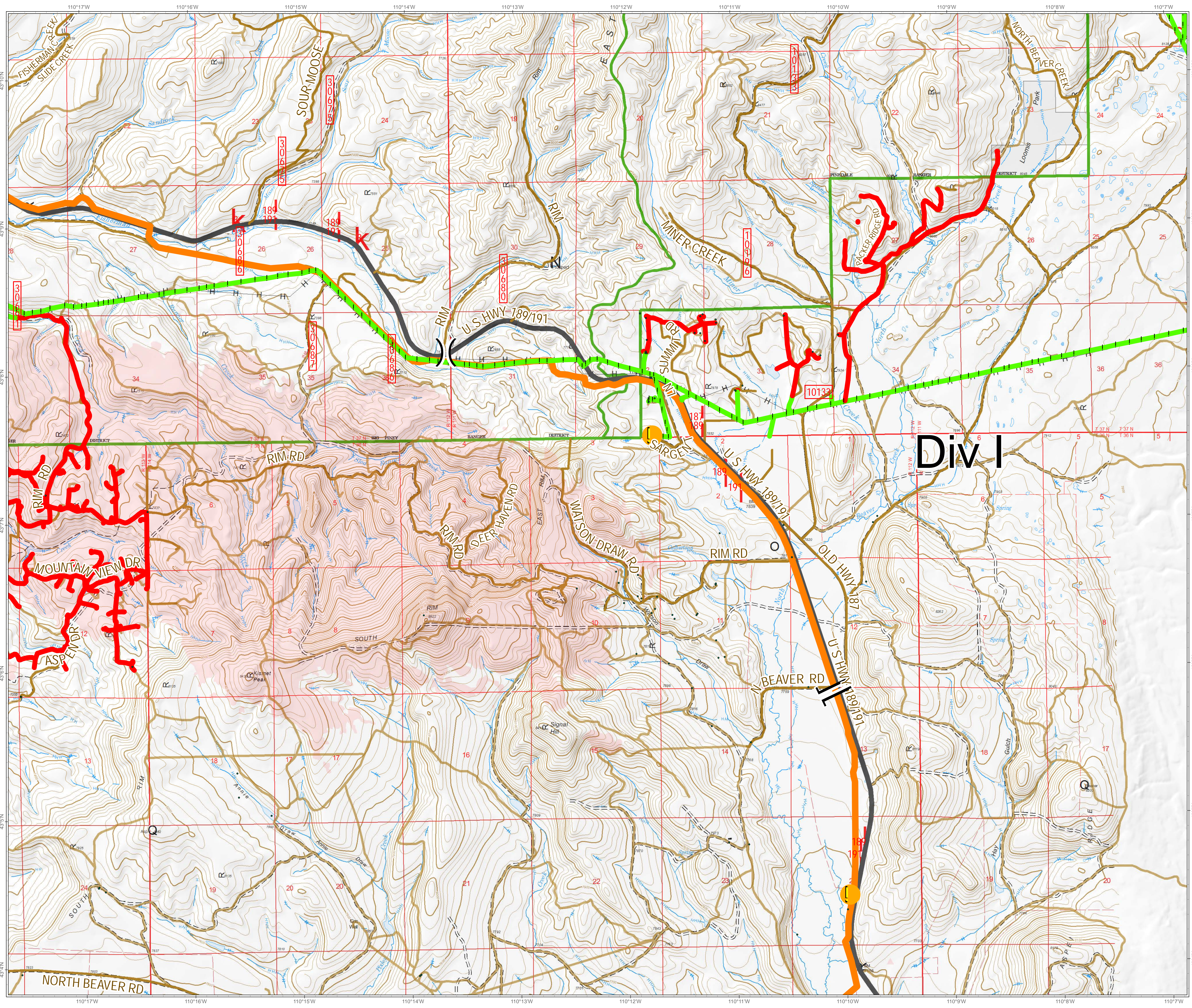


Roosevelt Fire
WY-BTF-001823
Utilities Div I
September 25, 2018

approximately 49,805 acres
on September 24, 2202 hr

- Natural Gas Pumphouse
- Pole
- Gas
- Electrical**
- Grade**
- Above
- Below



Div I

Great Basin Team 6 GIS
Author: bilalva
Date: 20180925 12:39 hr
File: Utilities_Hazards_DIV_A_36x48_land_2018_Roosevelt_WYBTF001823_2.mxd
Lat-Long Grid Ticks: 1' minute interval
Projection: NAD83 UTM Zone 12