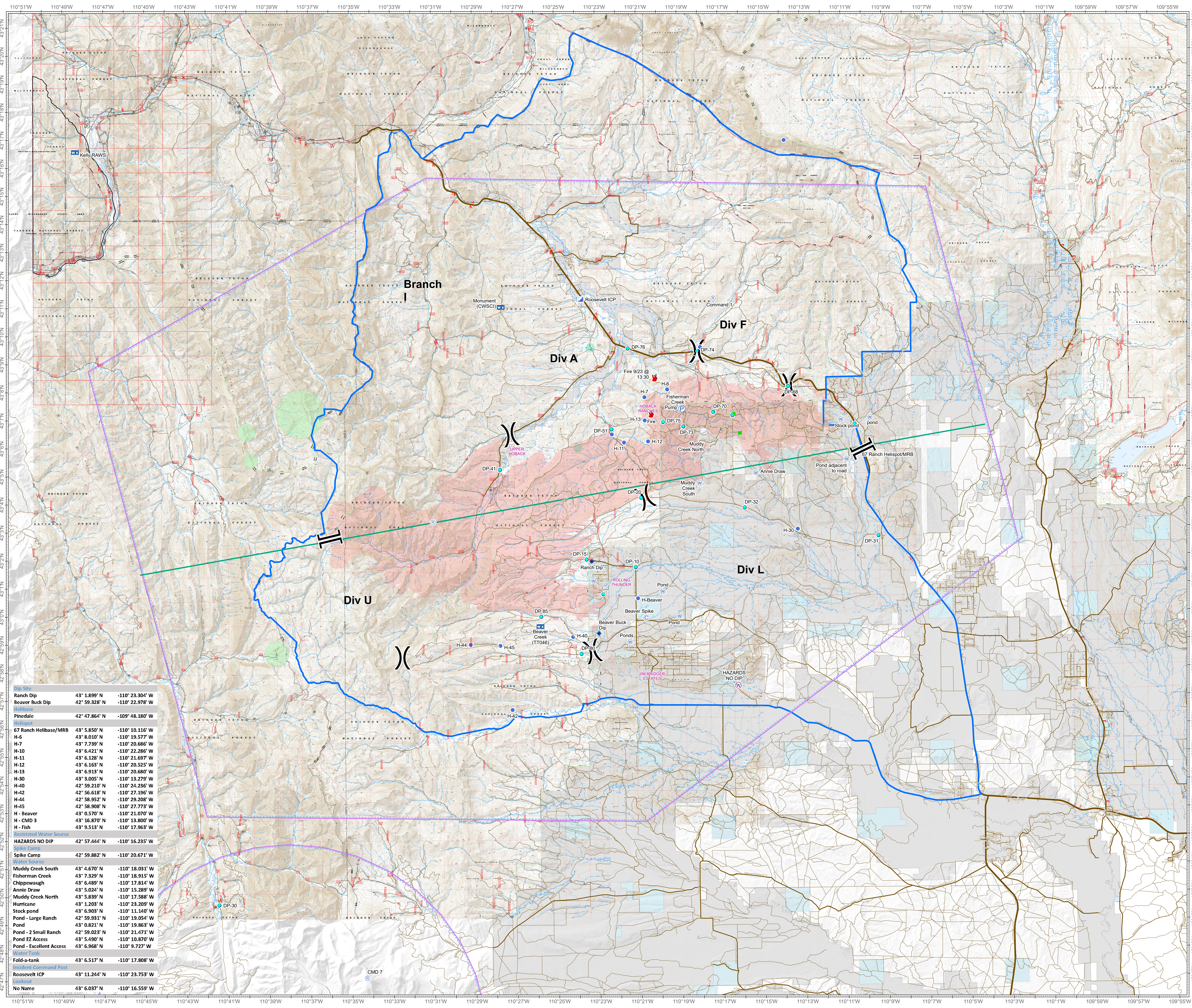


Roosevelt Fire WY-BTF-001823 Air Ops September 26, 2018

approximately 50,586 acres
on September 25, @ 2130 hrs

Legend

- IA Area
 - Temporary Flight Restriction
 - Camp
 - Dip Site
 - Drop Point
 - Fire Location
 - Helispot
 - Incident Command Post
 - Landmark
 - Mobile Weather Unit
 - Pump
 - Repeater
 - Spot Fire
 - Water Source
 - Water Tank
 - Restricted Water Source
 -) Division Break
 - | Branch Break
 - Branch Split Line
 - BotanyTESAvoid_091918
 - Heavy Equipment Avoidance Area
 - Heavy Equipment and Retardant Avoidance Area
- ### Land Ownership
- Name**
- Private Land
 - Forest Service (Transparent)
 - Bureau of Land Management
 - State
 - Water



Dip Site			
Ranch Dip	43° 1.899' N	-110° 23.304' W	
Beaver Buck Dip	42° 59.328' N	-110° 22.978' W	
Helibase			
Pinedale	42° 47.864' N	-109° 48.180' W	
Helispot			
67 Ranch Helibase/MRB	43° 5.850' N	-110° 10.116' W	
H-6	43° 8.010' N	-110° 19.577' W	
H-7	43° 7.739' N	-110° 20.686' W	
H-10	43° 6.421' N	-110° 22.286' W	
H-11	43° 6.128' N	-110° 21.697' W	
H-12	43° 6.163' N	-110° 20.525' W	
H-13	43° 6.913' N	-110° 20.680' W	
H-30	43° 3.005' N	-110° 13.279' W	
H-40	42° 59.210' N	-110° 24.236' W	
H-42	42° 56.618' N	-110° 27.196' W	
H-44	42° 58.952' N	-110° 28.208' W	
H-45	42° 58.908' N	-110° 27.773' W	
H - Beaver	43° 0.570' N	-110° 21.070' W	
H - CMD 3	43° 16.870' N	-110° 13.800' W	
H - Fish	43° 9.513' N	-110° 17.963' W	
Restricted Water Source			
HAZARDS NO DIP	42° 57.444' N	-110° 16.235' W	
Spike Camp			
Spike Camp	42° 59.882' N	-110° 20.671' W	
Water Tank			
Muddy Creek South	43° 4.670' N	-110° 18.031' W	
Fisherman Creek	43° 7.329' N	-110° 18.915' W	
Chippewaugh	43° 6.489' N	-110° 17.814' W	
Annie Draw	43° 5.024' N	-110° 15.289' W	
Muddy Creek North	43° 5.839' N	-110° 17.588' W	
Hurricane	43° 1.203' N	-110° 23.209' W	
Stock pond	43° 6.903' N	-110° 11.140' W	
Pond - Large Ranch	42° 59.931' N	-110° 19.054' W	
Pond	43° 0.821' N	-110° 19.863' W	
Pond - 2 Small Ranch	42° 59.023' N	-110° 21.471' W	
Pond EZ Access	43° 5.490' N	-110° 10.870' W	
Pond - Excellent Access	43° 6.968' N	-110° 9.727' W	
Water Tank			
Fold-a-tank	43° 6.517' N	-110° 17.808' W	
Incident Command Post			
Roosevelt ICP	43° 11.244' N	-110° 23.753' W	
Lookout			
No Name	43° 6.037' N	-110° 16.559' W	



Roosevelt Maps



bit.ly/rooseveltfire

Great Basin Team © GIS
 Author: jskidmore
 Date: 20180926 1941 hr
 File: AirOps_AirOps_2018_Roosevelt_WYBTF001823_V106.mxd
 Projection: NAD83 UTM Zone12
 Lat-Long Grid Ticks: 1' minute interval
 0 0.5 1 2 3 4 5 Miles