






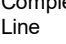
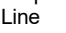
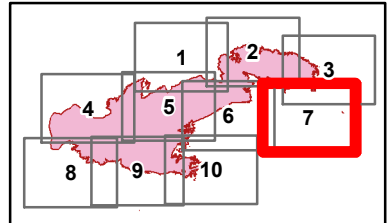


Roosevelt Fire
WY-BTF-001823
IAP Tile 7

September 26, 2018

appx. 49,805 acres on
September 24, 2202 hr

-  Natural Gas Pumphouse
-  Drop Point
-  Helispot
-  Lookout
-  Water Source
-  Branch Break
-  Uncontrolled Fire Edge
-  Completed Dozer Line
-  Proposed Dozer Line



Great Basin Team 2 GIS
Author: Ikobelt
Date: 20180925 2209 hr

0.5 Miles

Projection: NAD83 UTM Zone 12
Lat-Long Grid Ticks: 1' minute interval

