

Roosevelt Fire
WY-BTF-001823
IAP Tile 8

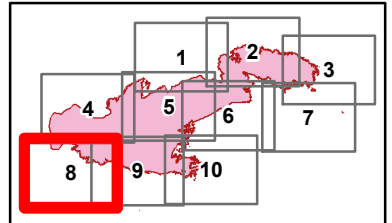
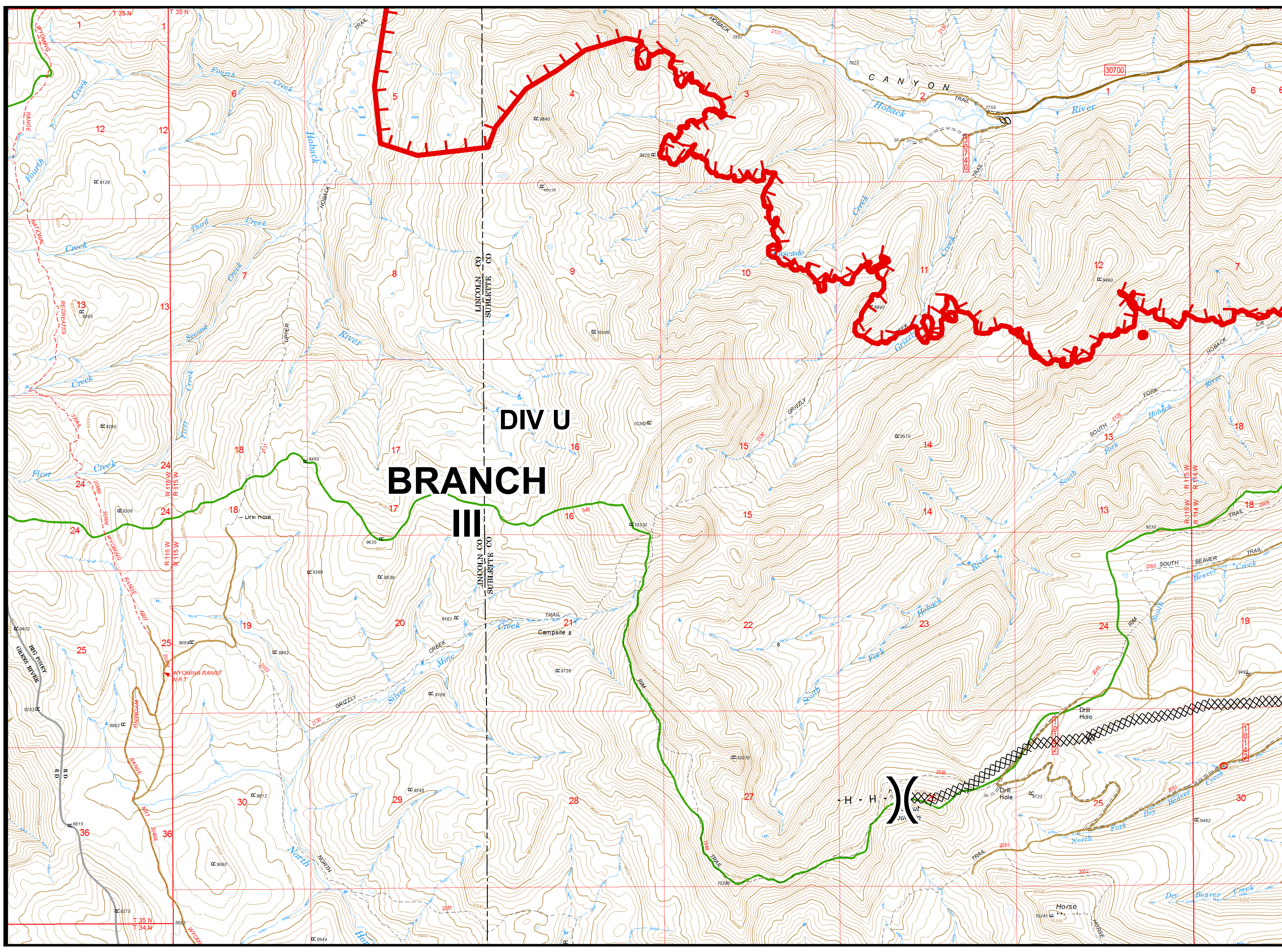
September 26, 2018

appx. 49,805 acres on
September 24, 2202 hr



Division Break

- Uncontrolled Fire Edge
- Completed Dozer Line
- Completed Hand Line



Great Basin Team 2 GIS
Author: Ikobelt
Date: 20180925 2209 hr

