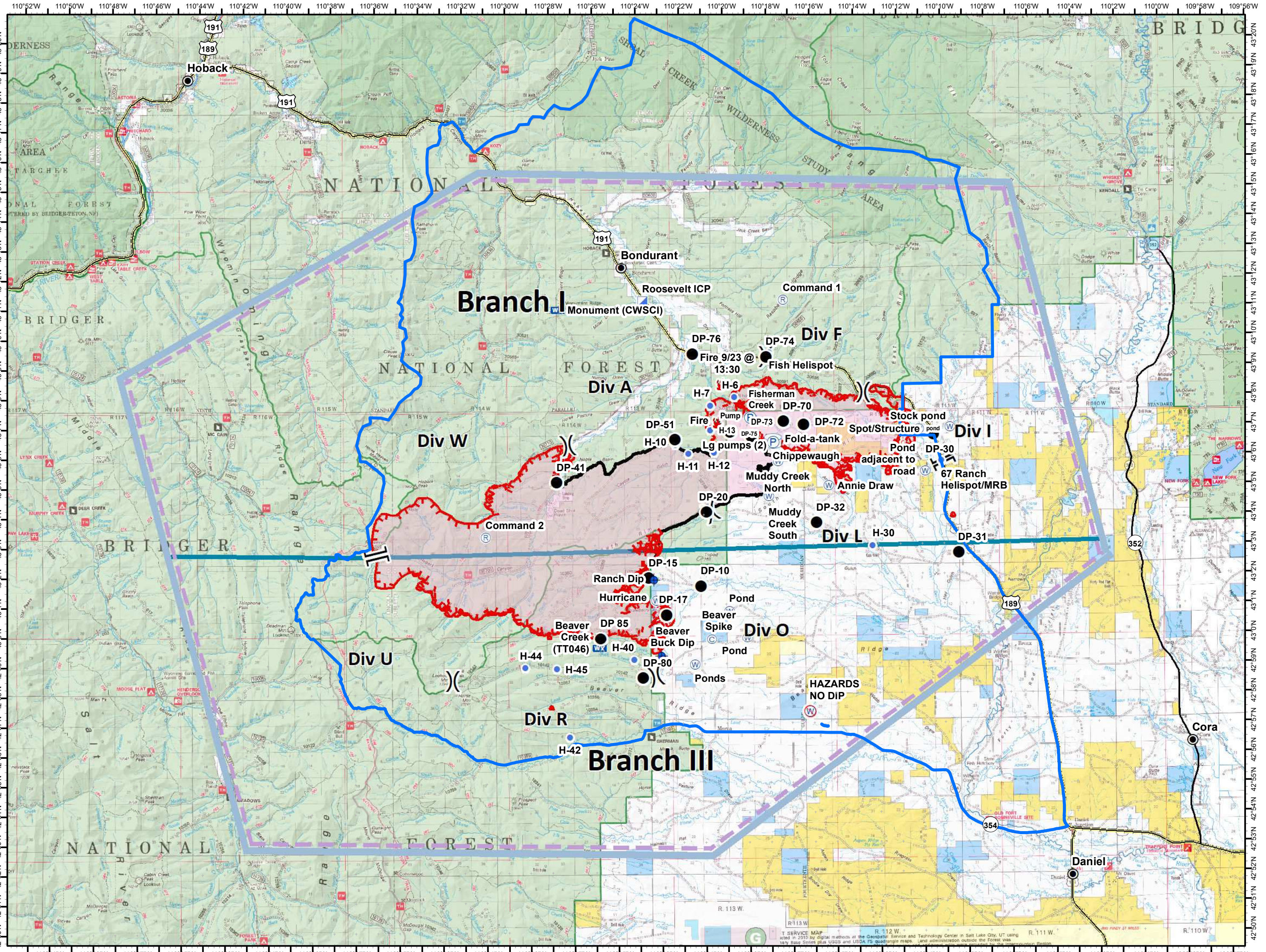
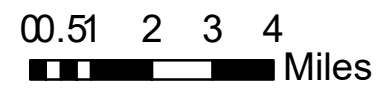


Roosevelt Fire
WY-BTF-001823
Pilot Map
 Sep 26, 2018
 50,585 acres
 as of 09/25/2018
 @ 2130 hrs

Legend

- 20180925_IA
- C Camp
- + Dip Site
- Drop Point
- 🔥 Fire Location
- Helispot
- ▢ Incident Command Post
- WX Mobile Weather Unit
- P Pump
- R Repeater
- Spot Fire
- W Water Source
- ⊞ Water Tank
- ⊞ Restricted Water Source
-) Division Break
- || Branch Break
- ┌ Fire Edge
- Completed Line
- Temporary Flight Restriction



THIS SERVICE MAP WAS PRODUCED IN 2019 BY DIGITAL SERVICES AND TECHNOLOGY CENTER IN SALT LAKE CITY, UT USING DATA PROVIDED BY THE NATIONAL FOREST SERVICE AND THE U.S. GEOLOGICAL SURVEY. LAND ADMINISTRATION OUTSIDE THE FOREST WAS OBTAINED FROM THE BUREAU OF LAND MANAGEMENT AND THE U.S. GEOLOGICAL SURVEY. LAND ADMINISTRATION OUTSIDE THE FOREST WAS OBTAINED FROM THE BUREAU OF LAND MANAGEMENT AND THE U.S. GEOLOGICAL SURVEY.

Dip Site

Ranch Dip	43° 1.899' N	-110° 23.304' W
Beaver Buck Dip	42° 59.328' N	-110° 22.978' W

Helibase

Pinedale	42° 47.864' N	-109° 48.180' W
----------	---------------	-----------------

Helispot

67 Ranch Helibase/MRB	43° 5.850' N	-110° 10.116' W
H-6	43° 8.010' N	-110° 19.577' W
H-7	43° 7.739' N	-110° 20.686' W
H-10	43° 6.421' N	-110° 22.286' W
H-11	43° 6.128' N	-110° 21.697' W
H-12	43° 6.163' N	-110° 20.525' W
H-13	43° 6.913' N	-110° 20.680' W
H-30	43° 3.005' N	-110° 13.279' W
H-40	42° 59.210' N	-110° 24.236' W
H-42	42° 56.618' N	-110° 27.196' W
H-44	42° 58.952' N	-110° 29.208' W
H-45	42° 58.908' N	-110° 27.773' W
Fish	43° 9.513' N	-110° 17.963' W

Restricted Water Source

HAZARDS NO DIP	42° 57.444' N	-110° 16.235' W
----------------	---------------	-----------------

Spike Camp

Spike Camp	42° 59.882' N	-110° 20.671' W
------------	---------------	-----------------

Water Source

Muddy Creek South	43° 4.670' N	-110° 18.031' W
Fisherman Creek	43° 7.329' N	-110° 18.915' W
Chippewaugh	43° 6.489' N	-110° 17.814' W
Annie Draw	43° 5.024' N	-110° 15.289' W
Muddy Creek North	43° 5.839' N	-110° 17.588' W
Hurricane	43° 1.203' N	-110° 23.209' W
Stock pond	43° 6.903' N	-110° 11.140' W
Pond - Large Ranch	42° 59.931' N	-110° 19.054' W
Pond	43° 0.821' N	-110° 19.863' W
Pond - 2 Small Ranch	42° 59.023' N	-110° 21.471' W
Pond EZ Access	43° 5.490' N	-110° 10.870' W
Pond - Excellent Access	43° 6.968' N	-110° 9.727' W

Water Tank

Fold-a-tank	43° 6.517' N	-110° 17.808' W
-------------	--------------	-----------------

Incident Command Post

Roosevelt ICP	43° 11.244' N	-110° 23.753' W
---------------	---------------	-----------------

Lookout

No Name	43° 6.037' N	-110° 16.559' W
---------	--------------	-----------------