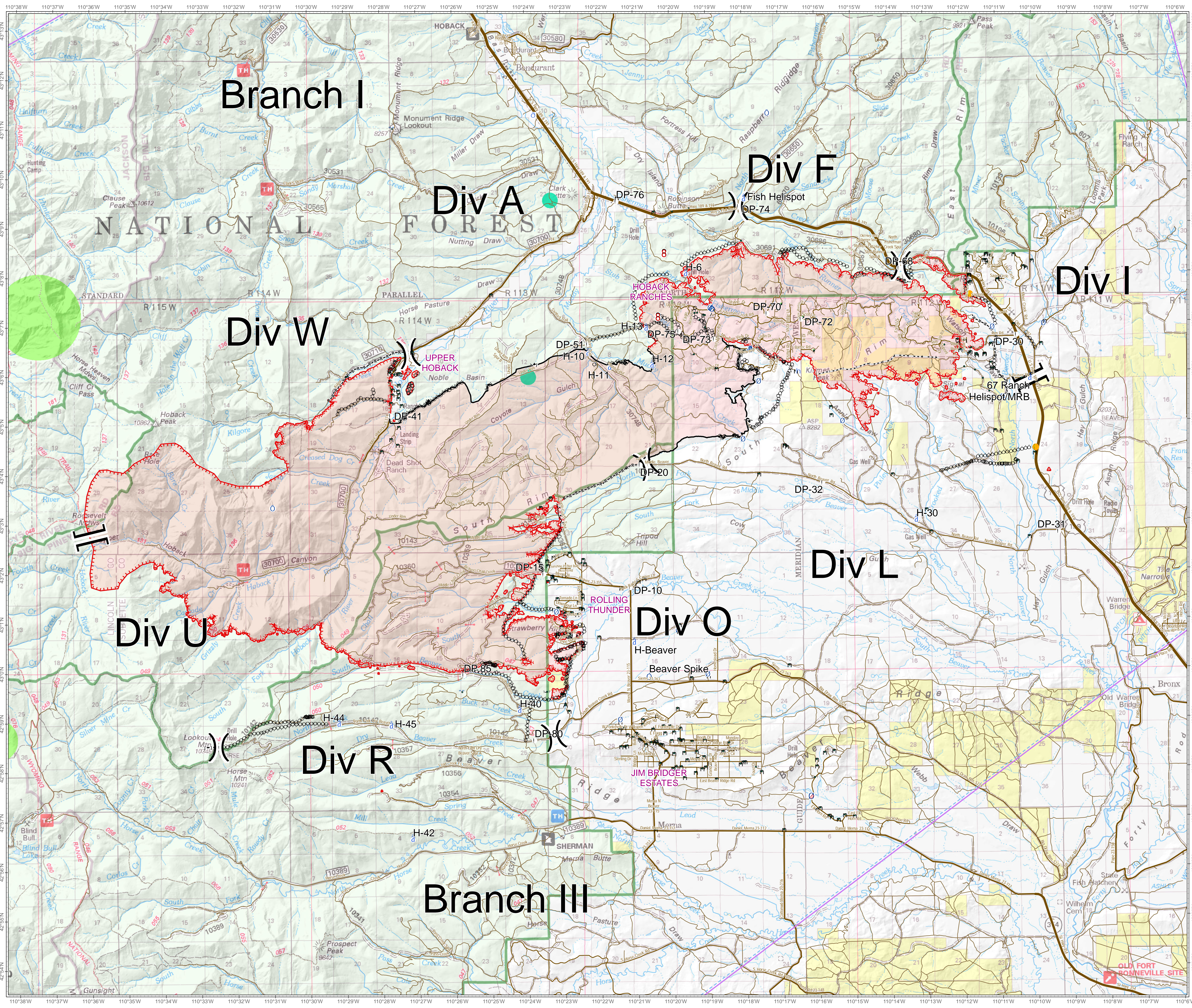


Roosevelt Fire
 WY-BTF-001823
 Planning Map
 September 26, 2018

approximately 50,585 acres
 on September 25, 2130 hr



- || Branch Break
-) Division Break
- ! Drop Point
- o Helibase
- ⊙ Helisport
- ⊙ Incident Command Post
- h Lookout
- ⊙ Pump
- ⊙ Repeater
- A Dip Site
- 8 Value at Risk
- ⊙ Water Source
- ⊙ Water Tank
- 8 Fire Location
- ⊙ Natural Gas Pumphouse
- Uncontrolled Fire Edge
- Completed Line
- Completed Dozer Line
- Completed Hand Line
- Road as Completed Line
- Active Burnout
- Temporary Flight Restriction
- Fuel Break
- Sage Grouse Leaks
- Heavy Equipment and Retardant Avoidance Area
- T and E Plant - Payson's Bladderpod
- Heavy Equipment Avoidance Area
- Roads
- US Highway
- WY Highway
- County
- Local Road
- USFS Road
- Trail

