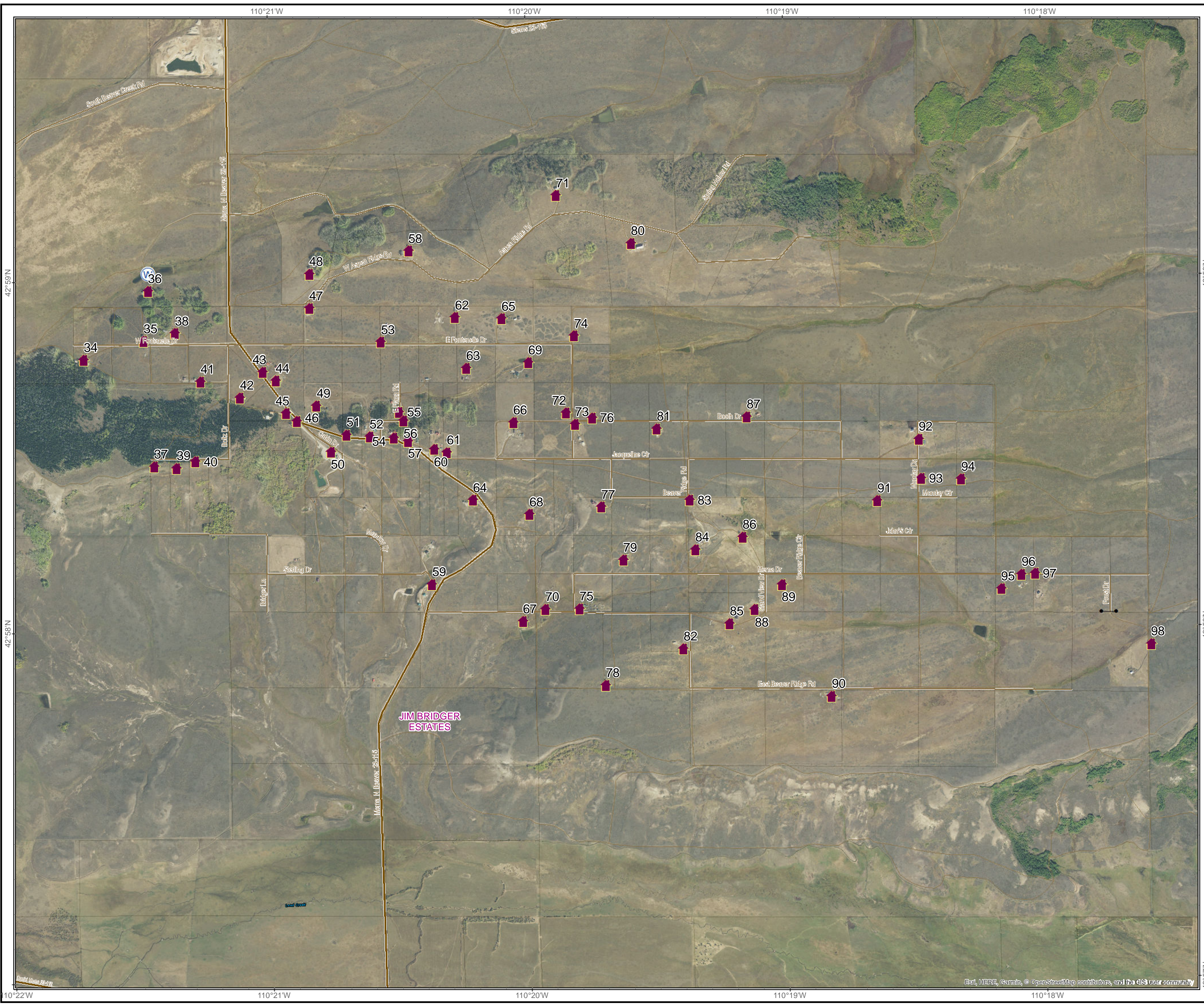


Roosevelt Fire

Operations Map
September 26, 2018
WY-BTF-001823

approximately 49,805 acres
on September 24, 2123 hr

- () Division Break
- Incident Command Post
- Helibase
- ! Drop Point
- Repeater
- ⊗ Value at Risk
- A Dip Site
- Water Source
- Water Tank
- ⊕ Pump
- ⊗ Gate
- h Lookout
- ⚡ Spot Fire
- Natural Gas Pumphouse
- Private Land
- Bureau of Land Management
- State
- US Highway
- WY Highway
- County
- Local Road
- USFS Road



Great Basin Team 2 GIS
Author: BRSilva
Date: 20180925 2150 hr
File: structure_18x24_jamd_2018_jim_bridges_estates_wybf001823_mxd
Lat-Long Grid Ticks: 1' minute interval
Projection: NAD83 UTM Zone12