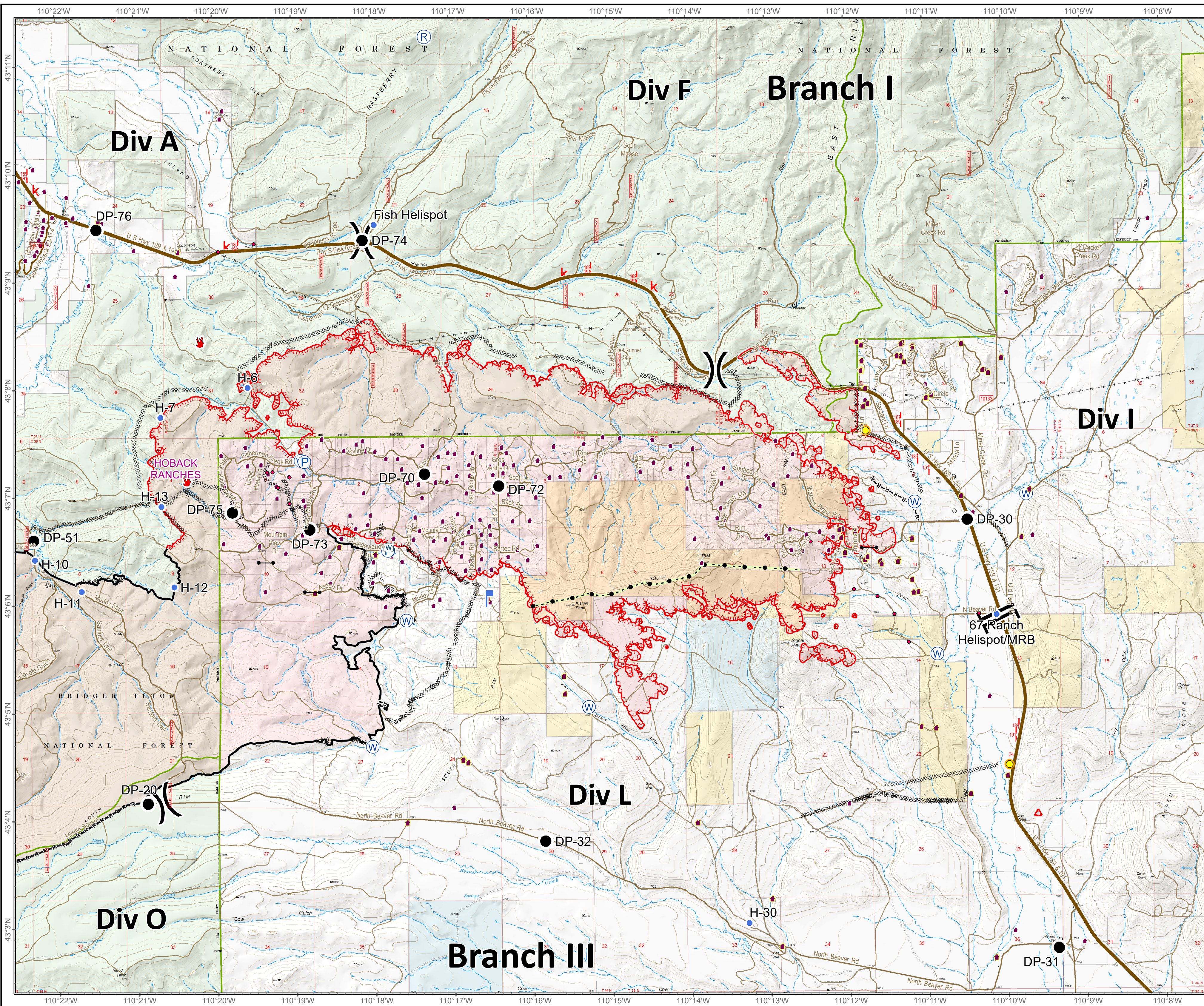


Roosevelt Fire

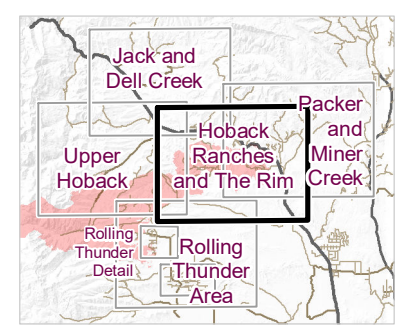
Hoback Ranches and The Rim Operations Map

September 26, 2018
WY-BTF-001823

approximately 50,585 acres
on September 25, 2130 hr



- (X) Division Break
- Incident Command Post
- Helibase
- Drop Point
- Repeater
- Value at Risk
- Dip Site
- Water Source
- Water Tank
- Pump
- Gate
- Lookout
- Spot Fire
- Natural Gas Pumphouse
- Uncontrolled Fire Edge
- Completed Line
- Completed Dozer Line
- R-R-R Road as Completed Line
- H-H-H Completed Hand Line
- Active Burnout
- Fuel Break
- Land Ownership
 - Private Land
 - Forest Service
 - Bureau of Land Management
 - State
 - USFS Forest/District Boundary
- Roads
 - US Highway
 - WY Highway
 - County
 - Local Road
 - USFS Road
 - Trail



Roosevelt Maps

bit.ly/rooseveltfire