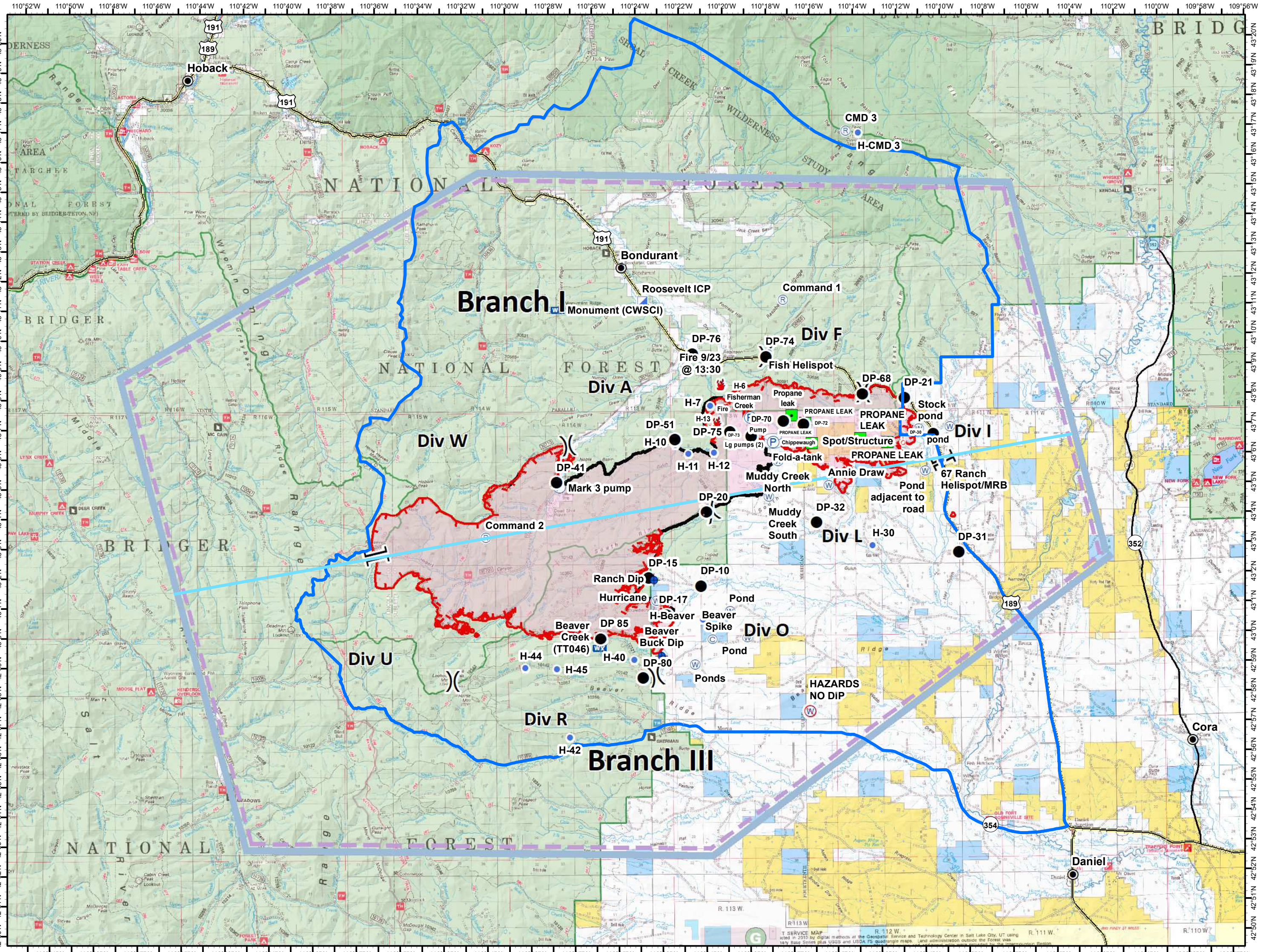
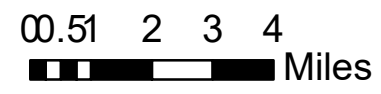
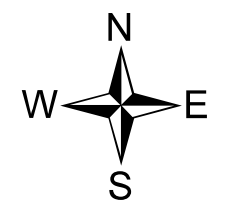


Roosevelt Fire
WY-BTF-001823
Pilot Map
 Sep 27, 2018
 51,864 acres
 as of 09/26/2018
 @ 2116 hrs

Legend

- Branch Split Line
- IA Area
- Camp
- Dip Site
- Drop Point
- Fire Location
- Helispot
- Incident Command Post
- Landmark
- Mobile Weather Unit
- Pump
- Repeater
- Spot Fire
- Water Source
- Water Tank
- Restricted Water Source
- Division Break
- Branch Break
- Fire Edge
- Completed Line
- Temporary Flight Restriction



UT SERVICE MAP
 dated in 2010 by digital methods at the Geospatial Service and Technology Center in Salt Lake City, UT using
 1:25,000 Scale Data Layers and USDA FV Quadrangle maps. Land administration outside the Forest was
 not shown.

Dip Site

Ranch Dip	43° 1.899' N	-110° 23.304' W
Beaver Buck Dip	42° 59.328' N	-110° 22.978' W

Helibase

Pinedale	42° 47.864' N	-109° 48.180' W
----------	---------------	-----------------

Helispot

67 Ranch Helibase/MRB	43° 5.850' N	-110° 10.116' W
H-6	43° 8.010' N	-110° 19.577' W
H-7	43° 7.739' N	-110° 20.686' W
H-10	43° 6.421' N	-110° 22.286' W
H-11	43° 6.128' N	-110° 21.697' W
H-12	43° 6.163' N	-110° 20.525' W
H-13	43° 6.913' N	-110° 20.680' W
H-30	43° 3.005' N	-110° 13.279' W
H-40	42° 59.210' N	-110° 24.236' W
H-42	42° 56.618' N	-110° 27.196' W
H-44	42° 58.952' N	-110° 29.208' W
H-45	42° 58.908' N	-110° 27.773' W
H - Beaver	43° 0.570' N	-110° 21.070' W
H - CMD 3	43° 16.870' N	-110° 13.800' W
H - Fish	43° 9.513' N	-110° 17.963' W

Restricted Water Source

HAZARDS NO DIP	42° 57.444' N	-110° 16.235' W
----------------	---------------	-----------------

Spike Camp

Spike Camp	42° 59.882' N	-110° 20.671' W
------------	---------------	-----------------

Water Source

Muddy Creek South	43° 4.670' N	-110° 18.031' W
Fisherman Creek	43° 7.329' N	-110° 18.915' W
Chippewaugh	43° 6.489' N	-110° 17.814' W
Annie Draw	43° 5.024' N	-110° 15.289' W
Muddy Creek North	43° 5.839' N	-110° 17.588' W
Hurricane	43° 1.203' N	-110° 23.209' W
Stock pond	43° 6.903' N	-110° 11.140' W
Pond - Large Ranch	42° 59.931' N	-110° 19.054' W
Pond	43° 0.821' N	-110° 19.863' W
Pond - 2 Small Ranch	42° 59.023' N	-110° 21.471' W
Pond EZ Access	43° 5.490' N	-110° 10.870' W
Pond - Excellent Access	43° 6.968' N	-110° 9.727' W

Water Tank

Fold-a-tank	43° 6.517' N	-110° 17.808' W
-------------	--------------	-----------------

Incident Command Post

Roosevelt ICP	43° 11.244' N	-110° 23.753' W
---------------	---------------	-----------------

Lookout

No Name	43° 6.037' N	-110° 16.559' W
---------	--------------	-----------------