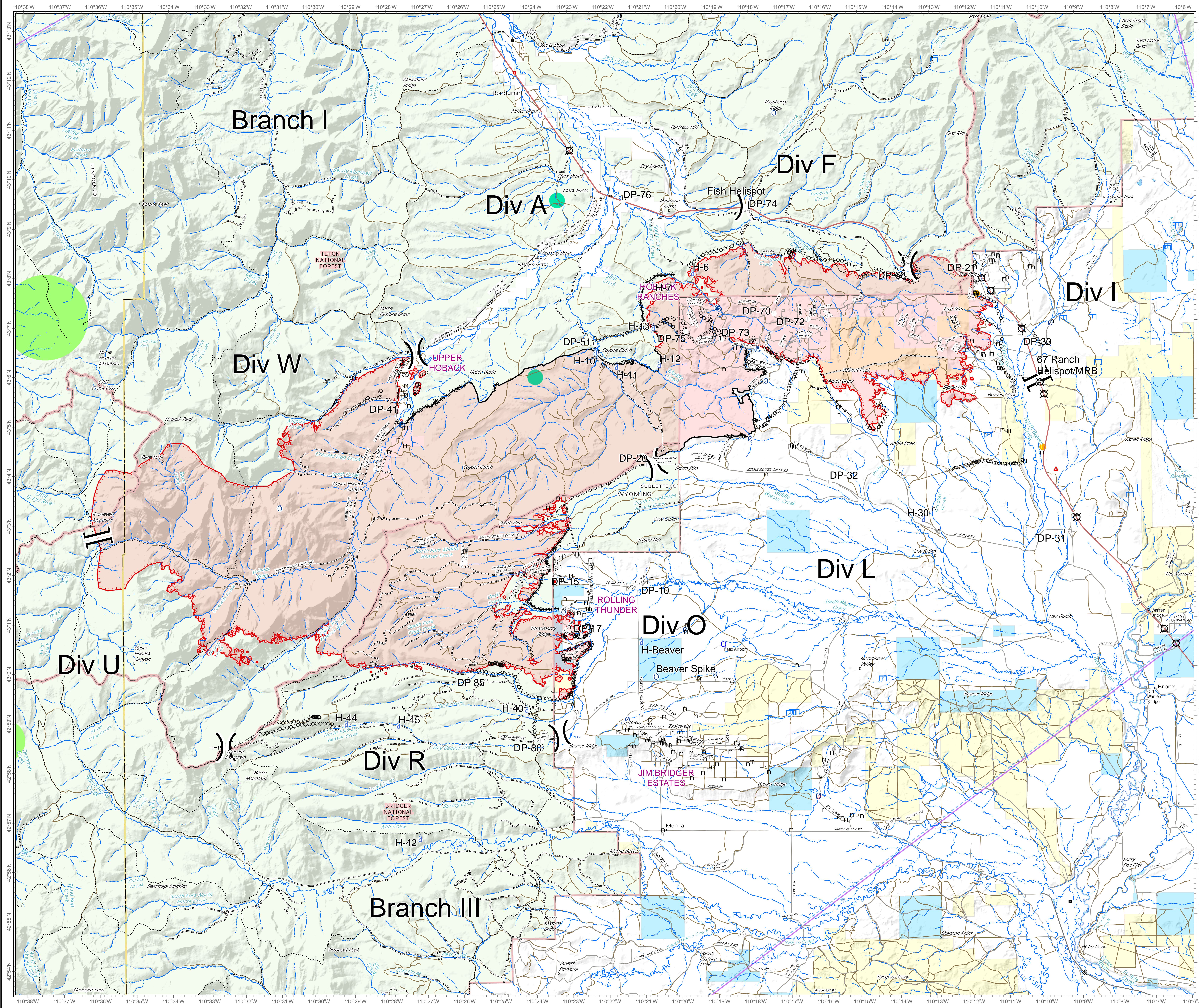


Roosevelt Fire  
 WY-BTF-001823  
 Planning/Ops  
 September 27, 2018

approximately 51,864 acres  
 on September 26, 2116 hr



- Camp
- A Dip Site
- ! Drop Point
- ⌋ Gate
- ⊕ Helispot
- ⊕ Incident Command Post
- ⊕ Lookout
- ⊕ Mobile Weather Unit
- ⊕ Pump
- ⊕ Repeater
- ⊕ Spot Fire
- ⊕ Water Source
- ⊕ Water Tank
- ⊕ Restricted Water Source
- n Value at Risk
- ) Division Break
- || Branch Break
- Natural Gas Pumpouse
- Uncontrolled Fire Edge
- Completed Line
- ⊕ Completed Dozer Line
- ⊕ Completed Hand Line
- ⊕ Road as Completed Line
- ⊕ Active Burnout
- ⊕ Temporary Flight Restriction
- ⊕ Fuel Break
- Heavy Equipment Avoidance
- Heavy Equipment
- Retardant Avoidance
- Forest Service
- Bureau of Land Management
- Private
- State

0 0.5 1 2 Miles

Great Basin Team & GIS  
 Author: bilbilva  
 Date: 20180927 13:09 hr  
 File: Planning\_36448\_land\_2018\_Roosevelt\_WYBTF001823.mxd  
 Lat-Long Grid Ticks: 1' minute interval  
 Projection: NAD83 UTM Zone 12