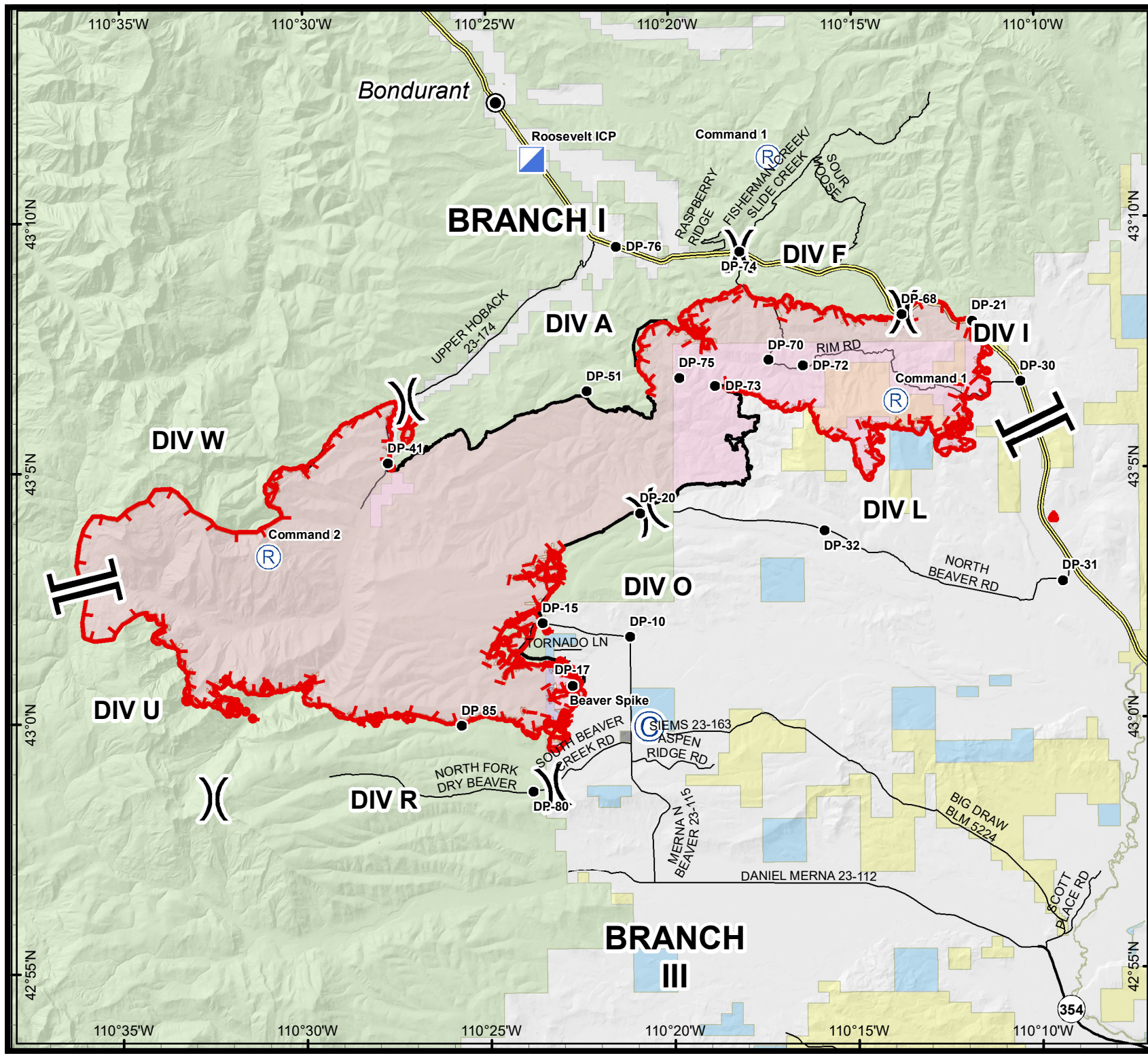


Roosevelt Fire

WY-BTF-001823

Transportation Map

Sept. 27, 2018
51,864 acres



- Camp
- Drop Point
- Incident Command Post
- Repeater
- Division Break
- Branch Break
- Uncontrolled Fire Edge
- Completed Line
- Wildfire Daily Fire Perimeter
- Forest Service
- Bureau of Land Management
- Private
- State



Projection: NAD83 UTM Zone 12 N
 Lat-Long Grid Ticks: 5' minute interval
 Miles 0 0.5 1 2 3

Great Basin Team 6 GIS
 author: mpanunto
 date: 20180927 0446 hr