

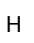


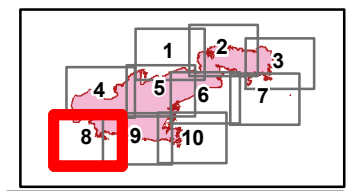
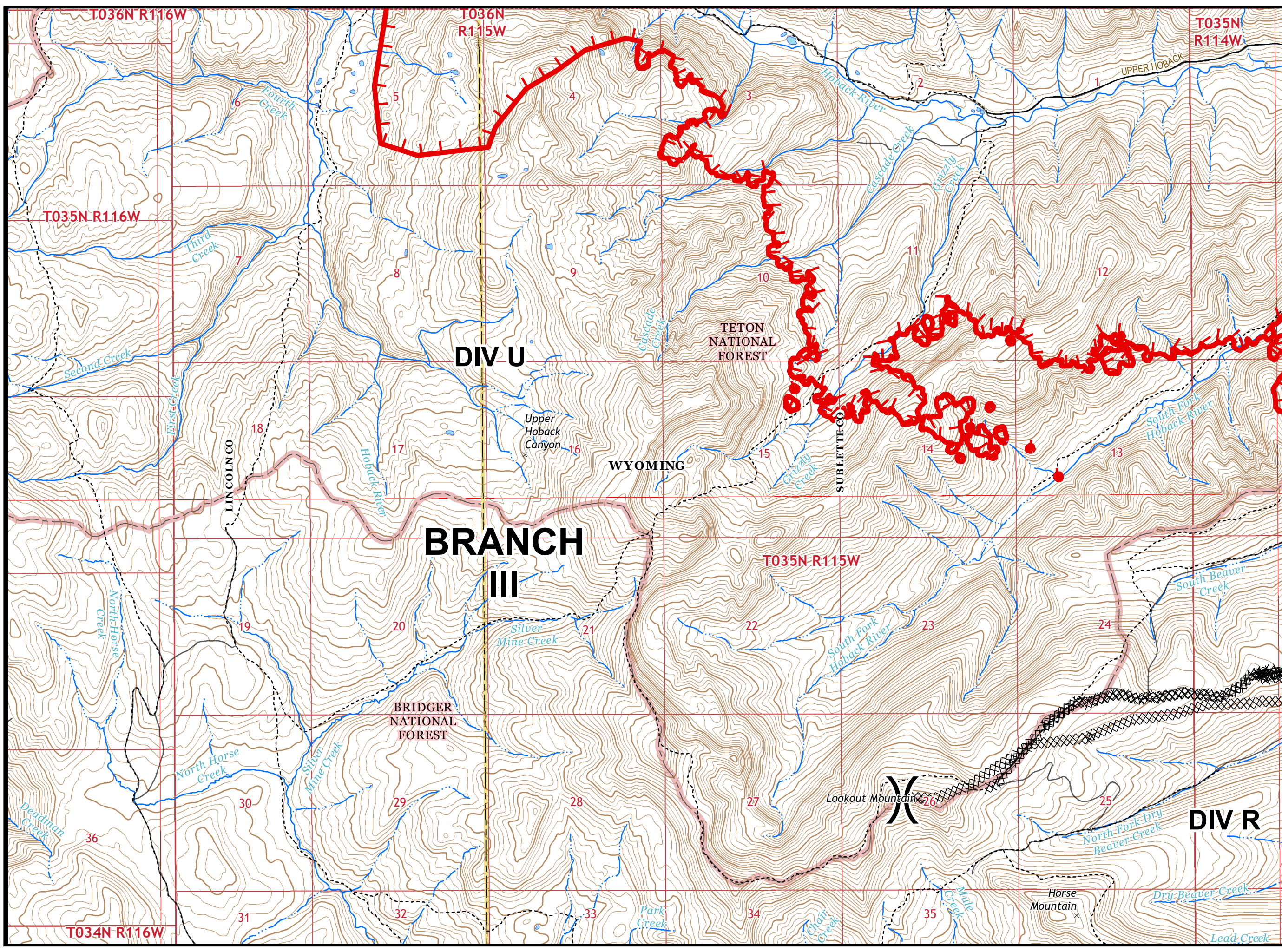
Roosevelt Fire
WY-BTF-001823
IAP Tile 8
September 28, 2018

appx. 51,864 acres on
September 26, 2016



Division Break

-  Uncontrolled Fire Edge
-  Completed Dozer Line
-  Completed Hand Line



Great Basin Team 2 GIS
Author: lkobelt
Date: 20180927 2223 hr

0.5 Miles

Projection: NAD83 UTM Zone 12
Lat-Long Grid Ticks: 1' minute interval

