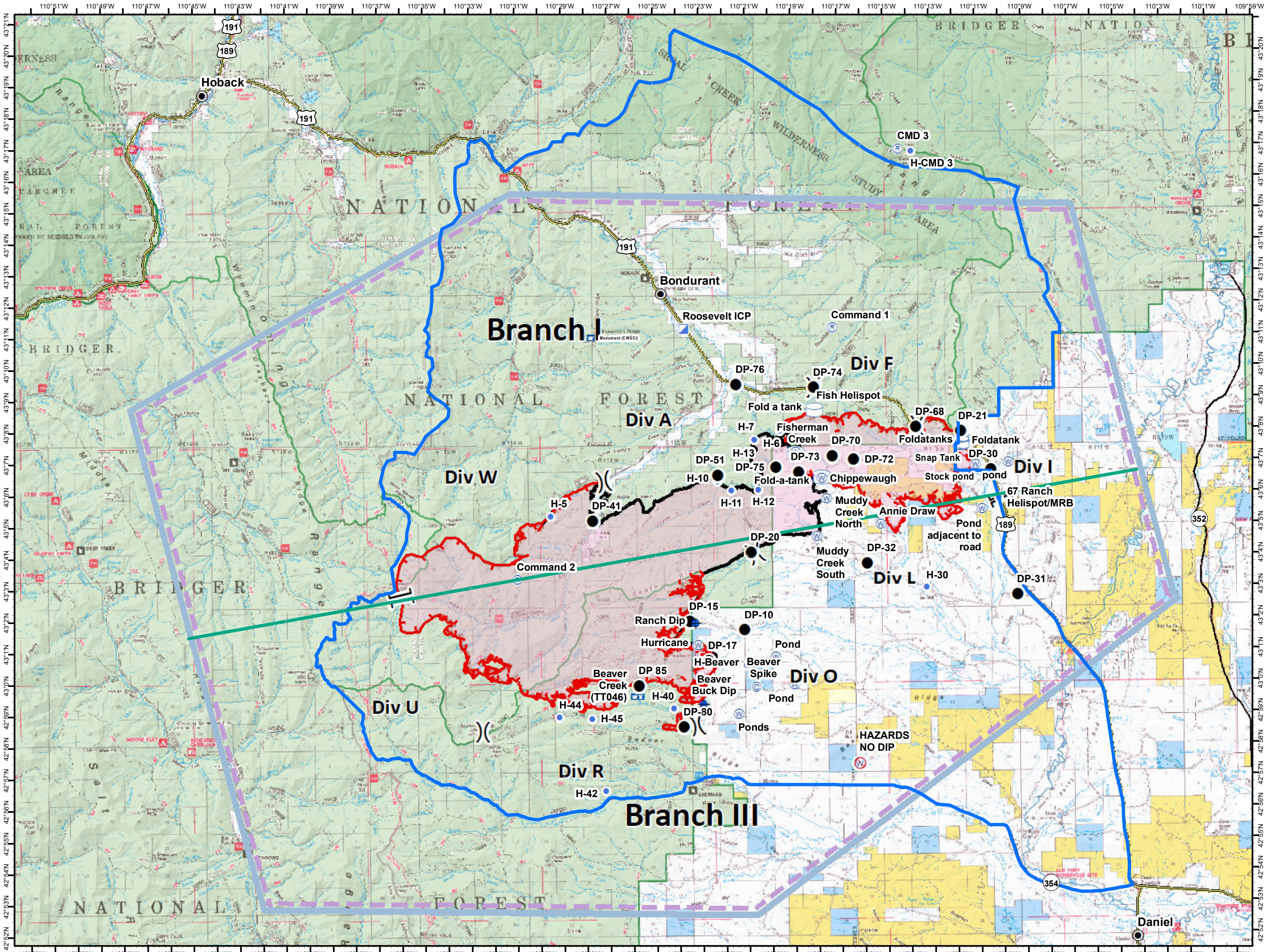


Roosevelt Fire
WY-BTF-001823
Pilot Map
 Sep 28, 2018
 54,070 acres
 as of 09/27/2018
 @ 2029 hrs



Legend

- Branch Split Line
- IA Area
- Camp
- Dip Site
- Drop Point
- Helispot
- Incident Command Post
- Mobile Weather Unit
- Repeater
- Water Source
- Water Tank
- Restricted Water Source
- Division Break
- Branch Break
- Fire Edge
- Completed Line
- Temporary Flight Restriction

North arrow with N, S, E, W directions.

Scale bar: 0 0.5 1 2 3 4 Miles