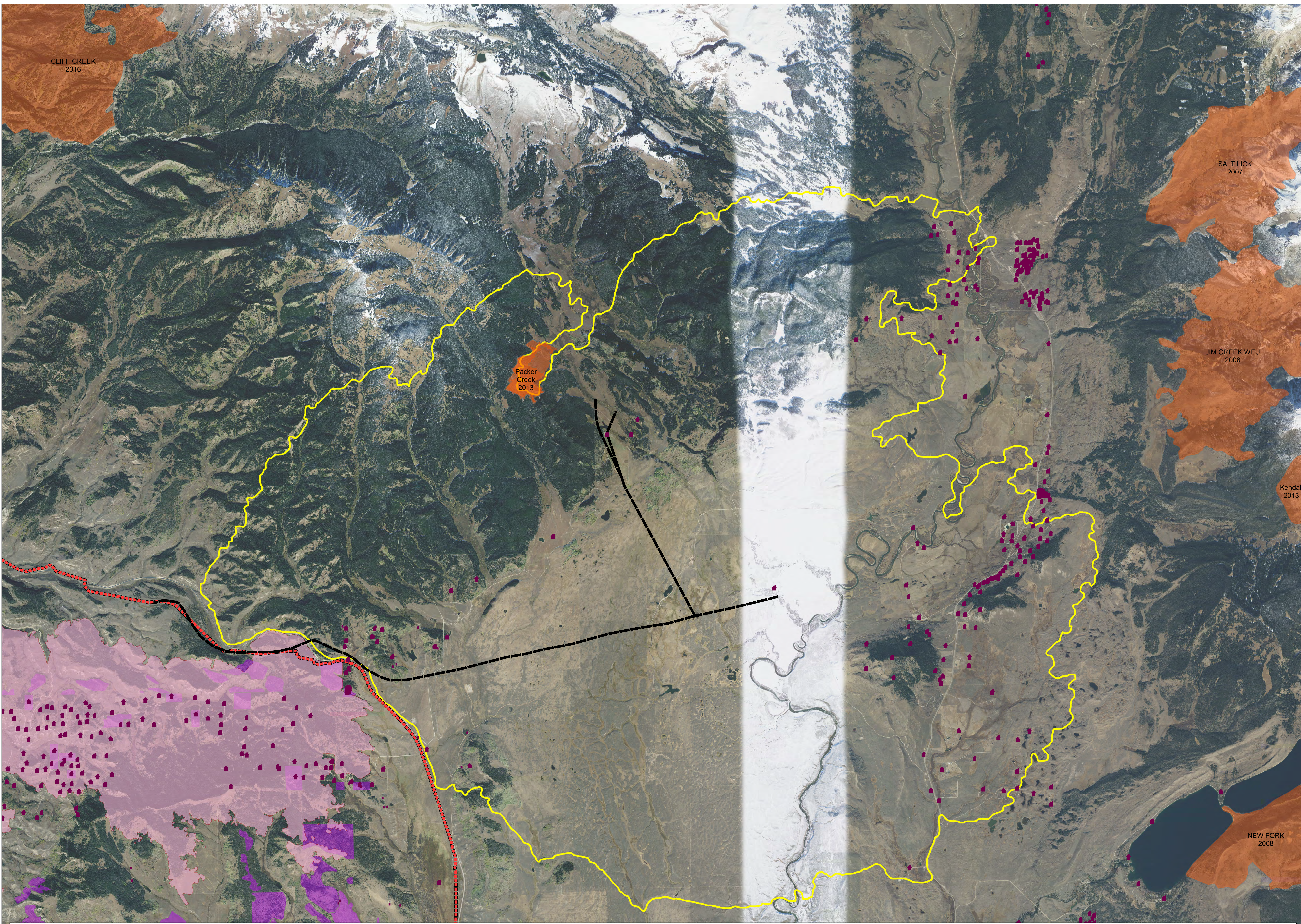


Roosevelt Fire
 WY-BTF-001823
Strategic Planning
 September 28, 2018

approximately 54,070 acres
 as of September 27 at 2029 hr

- Value at Risk
- Gas Wells Legend
- BLM Powerlines
- Gas Transmission
- Wildfire Daily Fire Perimeter
- NTFB 6-Day Scenario
- Fuels Treatments



East - HWY 189/191 Strategic Information

Situation: The map displays the outermost potential spread perimeter from a 6 day NTFB run for the dates of (9-26 thru 10-1). This is to say that a single section of fire could potentially reach this outermost perimeter. The run assumes that the fire spots across the highway onto the east side. Wind and alignment with available fuels will determine spread direction and pattern.

Values at Risk: Structures and improvements are displayed on this map. Some structure prep has occurred however there are several within the foot print of the 6 day perimeter that would require additional investment to prepare. Values within the grass/brush vegetation will generally require fewer resources to protect and heavy equipment will prove very effective there.

Tactical Considerations: If fire is established in the forested portions in the northwestern area of the 6 day perimeter, the 10133 road may be an effective place to check eastward spread and prevent further movement to the values at risk. There is also an existing fire scar located between North beaver Creek and Little Twin Creek just north of the flying A Ranch. The grass/brush vegetation portions of the area should be the more effective places to control the fire. Direct attack with heavy equipment, engines and retardant will likely be successful. If fire progresses east of Twin Creek, the TFR will need to be expanded to the east.

