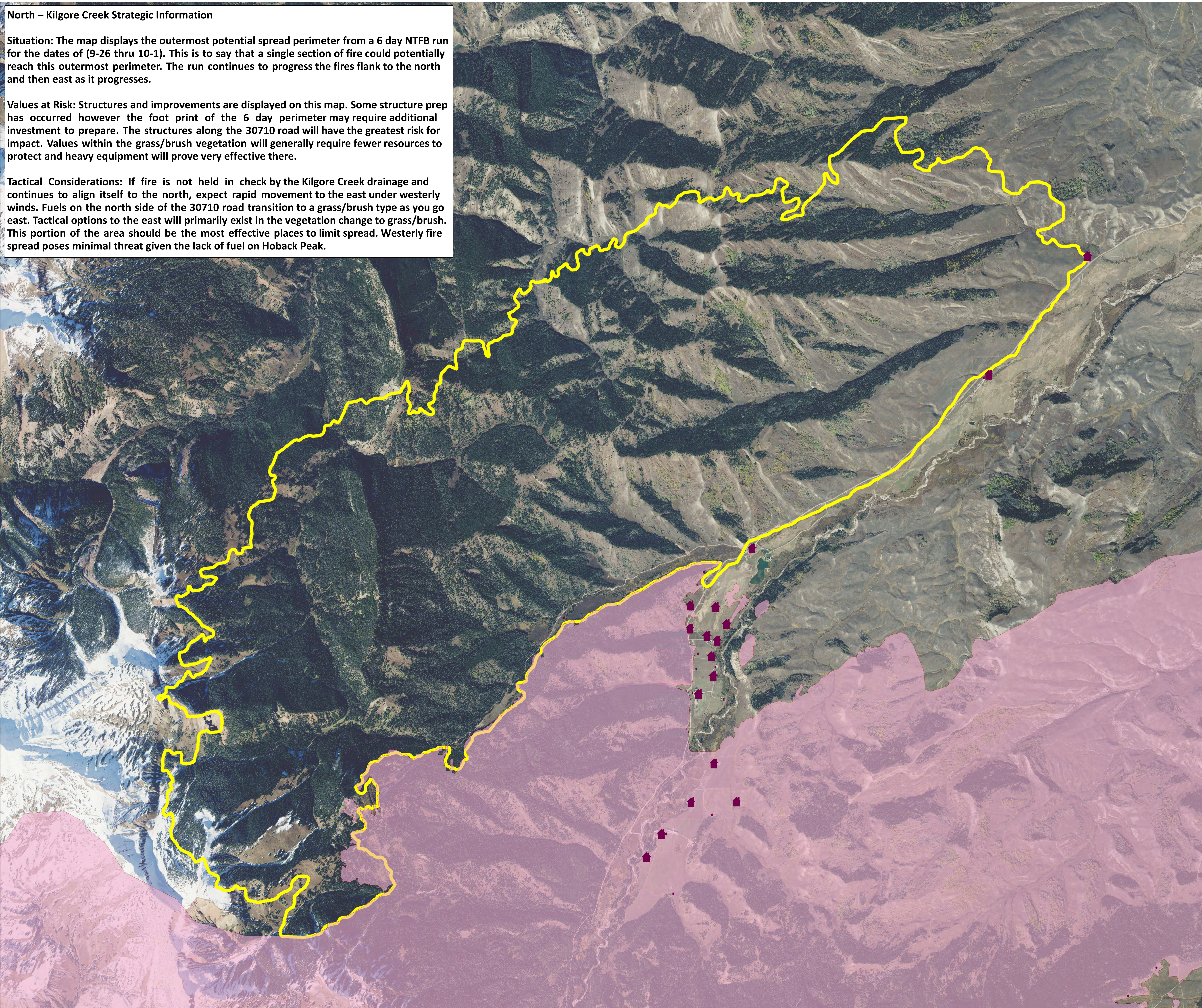


North – Kilgore Creek Strategic Information

Situation: The map displays the outermost potential spread perimeter from a 6 day NTFB run for the dates of (9-26 thru 10-1). This is to say that a single section of fire could potentially reach this outermost perimeter. The run continues to progress the fires flank to the north and then east as it progresses.

Values at Risk: Structures and improvements are displayed on this map. Some structure prep has occurred however the foot print of the 6 day perimeter may require additional investment to prepare. The structures along the 30710 road will have the greatest risk for impact. Values within the grass/brush vegetation will generally require fewer resources to protect and heavy equipment will prove very effective there.

Tactical Considerations: If fire is not held in check by the Kilgore Creek drainage and continues to align itself to the north, expect rapid movement to the east under westerly winds. Fuels on the north side of the 30710 road transition to a grass/brush type as you go east. Tactical options to the east will primarily exist in the vegetation change to grass/brush. This portion of the area should be the most effective places to limit spread. Westerly fire spread poses minimal threat given the lack of fuel on Hoback Peak.



Roosevelt Fire WY-BTF-001823 Strategic Planning September 28, 2018

approximately 54,070 acres
as of September 27 at 2029 hr

- Value at Risk
- Gas Wells Legend
- BLM Powerlines
- Gas Transmission
- Wildfire Daily Fire Perimeter
- NTFB 6-Day Scenario
- Fuels Treatments



Great Basin Team 2 GIS
Author: mpanunto
Date: 20180928 0721
File: StrategicPlanning_3648_Jan_2018_Roosevelt_WYBTF001823.mxd
Lat-Long Grid Ticks: 1' minute interval
Projection: NAD83 UTM Zone12

