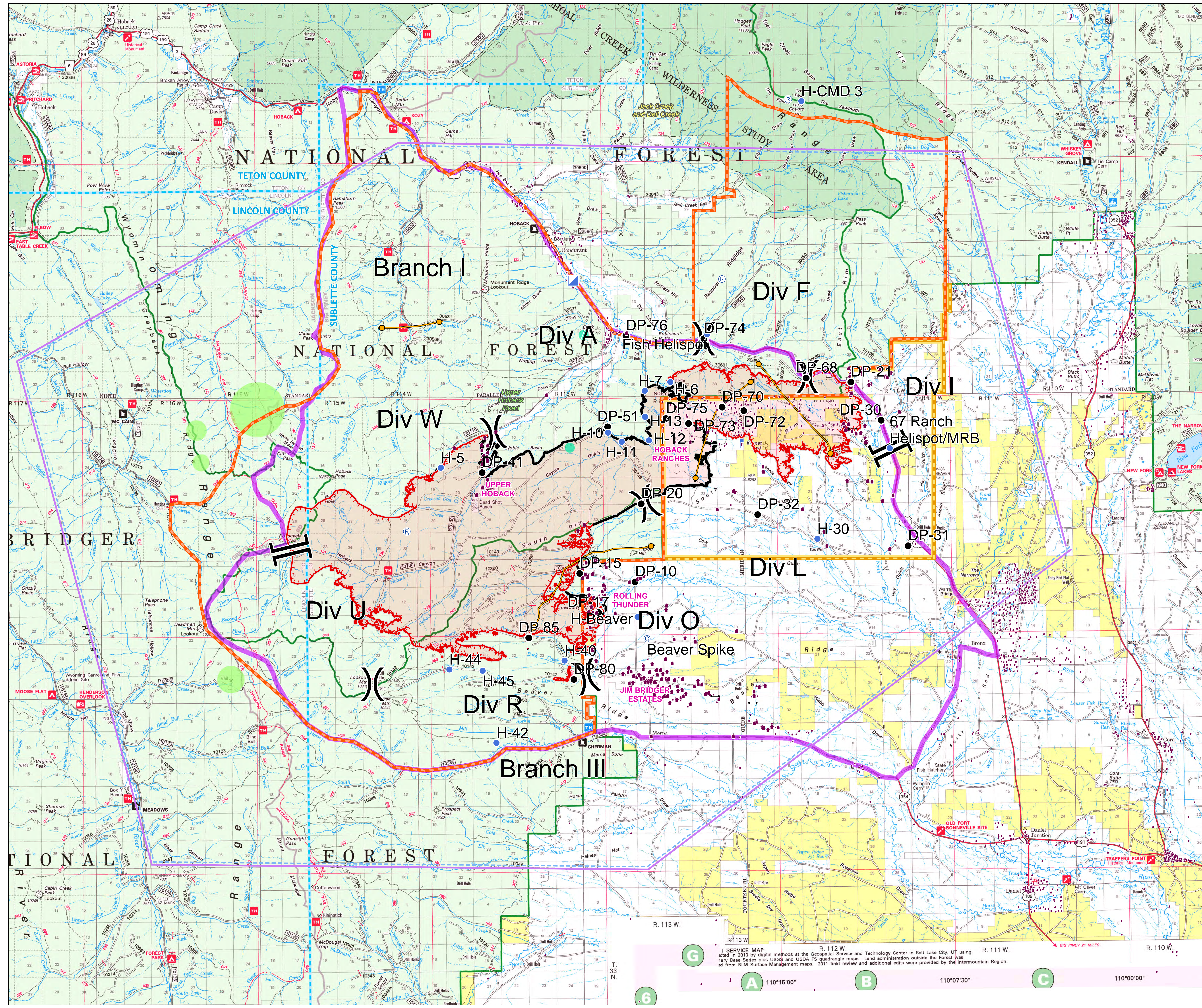


Roosevelt Fire WY-BTF-001823 Situation September 28, 2018

approximately 54,070 acres
as of September 27 at 2029 hr



- Branch Break
- Division Break
- Drop Point
- Incident Command Post
- Camp
- Lookout
- Repeater
- Value at Risk
- Uncontrolled Fire Edge
- Completed Line
- Temporary Flight Restriction
- Planning Area as of September 2011
- Management Action Point (MAP)
- USFS Closure Area as of September 22
- BLM Closure Area as of September 20
- County Boundary
- Forest Ranger District Boundary
- Private Inholdings near USFS
- Sage Grouse Leaks**
- Heavy Equipment and Retardant Avoidance Area
- T and E Plant - Payson's Bladderpod**
- Heavy Equipment Avoidance Area

MAP 2 - Cliff Creek Trailhead
CONDITIONS:
 Fire approaches the cliff creek trailhead/end of the cliff creek road(30530 road)
ACTIONS:
 Consider a road/area closure for the cliff creek drainage
RESOURCES:
 Two type 6 engines
 One Sec 2

MAP 3 - Kismet Communications Site
CONDITIONS:
 Fire threatens the communications site on Kismet Peak
ACTIONS:
 Consider implementing actions to protect the repeater infrastructure.
RESOURCES:
 This is an important interagency VAR, more specific info will be added

MAP 5 - Rim Station
CONDITIONS:
 Fire approaches Highway 189/191 north and west of Kismet communication site
ACTIONS:
 Recommend evacuation of Rim Station
 Consider the need for closure of Highway 189/191
RESOURCES:
 (none specified)

MAP 6 - Jim Bridger Estates
CONDITIONS:
 Fire Reaches Rolling Thunder
ACTIONS:
 Recommend evacuation of Jim Bridger Estates
RESOURCES:
 (none specified)

