

**Air Operations**  
 Roosevelt  
 WY-BTF-001823  
 09/30/2018  
 57,969  
 Acres



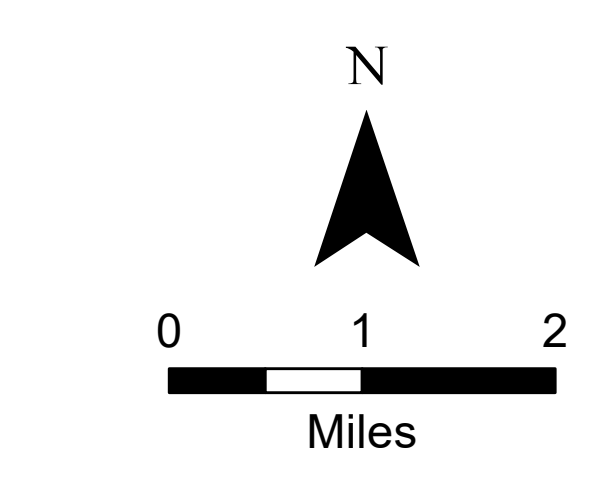
**Legend**

- Camp
- Dip Site
- Drop Point
- Helispot
- Incident Command Post
- Mobile Weather Unit
- Repeater
- Water Source
- Water Tank
- Restricted Water Source
- Division Break
- Branch Break
- Branch Split Line
- Temporary Flight Restriction

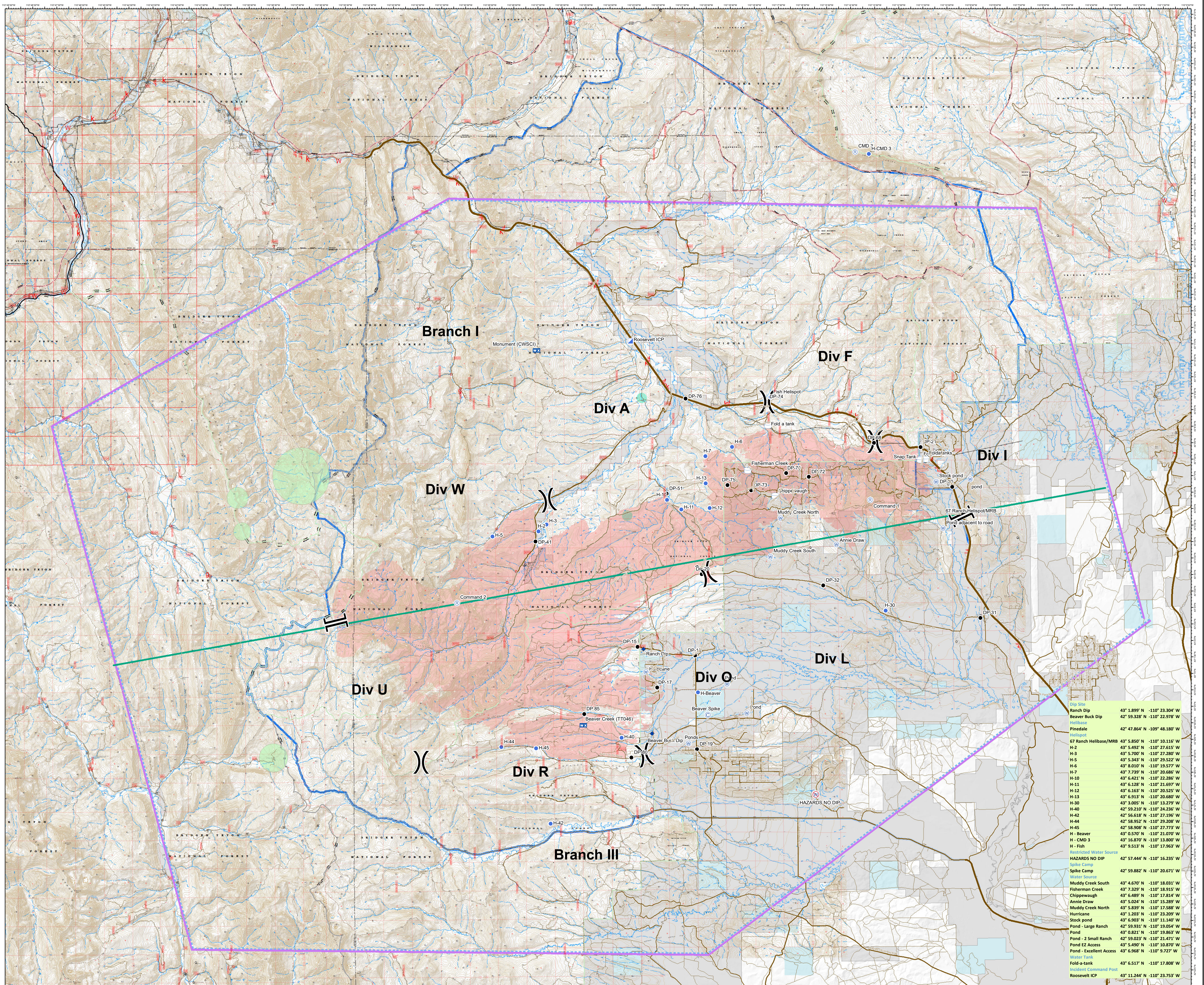
- IA Area
- BotanyTESAv01\_091918
- Heavy Equipment Avoidance Area
- Heavy Equipment and Retardant Avoidance Area

**Land Ownership**

- Private Land
- Forest Service (Transparent)
- Bureau of Land Management
- State
- Water



Datum: NAD 1983 UTM Zone 12N  
 Created by: jskidmore  
 Created Date: 9/29/2018



Point Name	Latitude	Longitude
Ranch Dip	43° 1.899' N	-110° 23.304' W
Beaver Buck Dip	42° 59.328' N	-110° 22.978' W
Helibase	42° 47.864' N	-109° 48.180' W
Pinedale	43° 5.850' N	-110° 10.116' W
67 Ranch Helibase/MRB	43° 5.492' N	-110° 27.615' W
H-2	43° 5.700' N	-110° 27.280' W
H-3	43° 5.343' N	-110° 29.522' W
H-4	43° 8.010' N	-110° 19.577' W
H-5	43° 7.739' N	-110° 20.686' W
H-6	43° 6.421' N	-110° 22.286' W
H-7	43° 6.128' N	-110° 21.697' W
H-8	43° 6.163' N	-110° 20.525' W
H-9	43° 6.913' N	-110° 20.680' W
H-10	43° 3.005' N	-110° 13.279' W
H-11	42° 59.210' N	-110° 24.236' W
H-12	42° 56.618' N	-110° 27.196' W
H-13	42° 58.952' N	-110° 29.208' W
H-14	42° 58.908' N	-110° 27.773' W
H-15	43° 0.570' N	-110° 21.070' W
H-CMD 3	43° 16.870' N	-110° 13.806' W
H-Fish	43° 9.513' N	-110° 17.963' W
Restricted Water Source		
HAZARDS NO DIP	42° 57.444' N	-110° 16.235' W
Spike Camp	42° 59.882' N	-110° 20.671' W
Water Source		
Muddy Creek South	43° 4.670' N	-110° 18.031' W
Fisherman Creek	43° 7.329' N	-110° 18.915' W
Chippewaugh	43° 6.489' N	-110° 17.814' W
Annie Draw	43° 5.024' N	-110° 15.286' W
Muddy Creek North	43° 5.839' N	-110° 17.588' W
Hurricane	43° 1.203' N	-110° 23.209' W
Stock pond	43° 6.903' N	-110° 11.140' W
Pond - Large Ranch	42° 59.931' N	-110° 19.054' W
Pond	43° 0.821' N	-110° 19.865' W
Pond - 2 Small Ranch	42° 59.023' N	-110° 21.471' W
Pond EZ Access	43° 5.490' N	-110° 10.870' W
Pond - Excellent Access	43° 6.968' N	-110° 9.727' W
Water Tank		
Fold-a-tank	43° 6.517' N	-110° 17.808' W
Incident Command Post		
Roosevelt ICP	43° 11.244' N	-110° 23.753' W