

# Roosevelt Fire

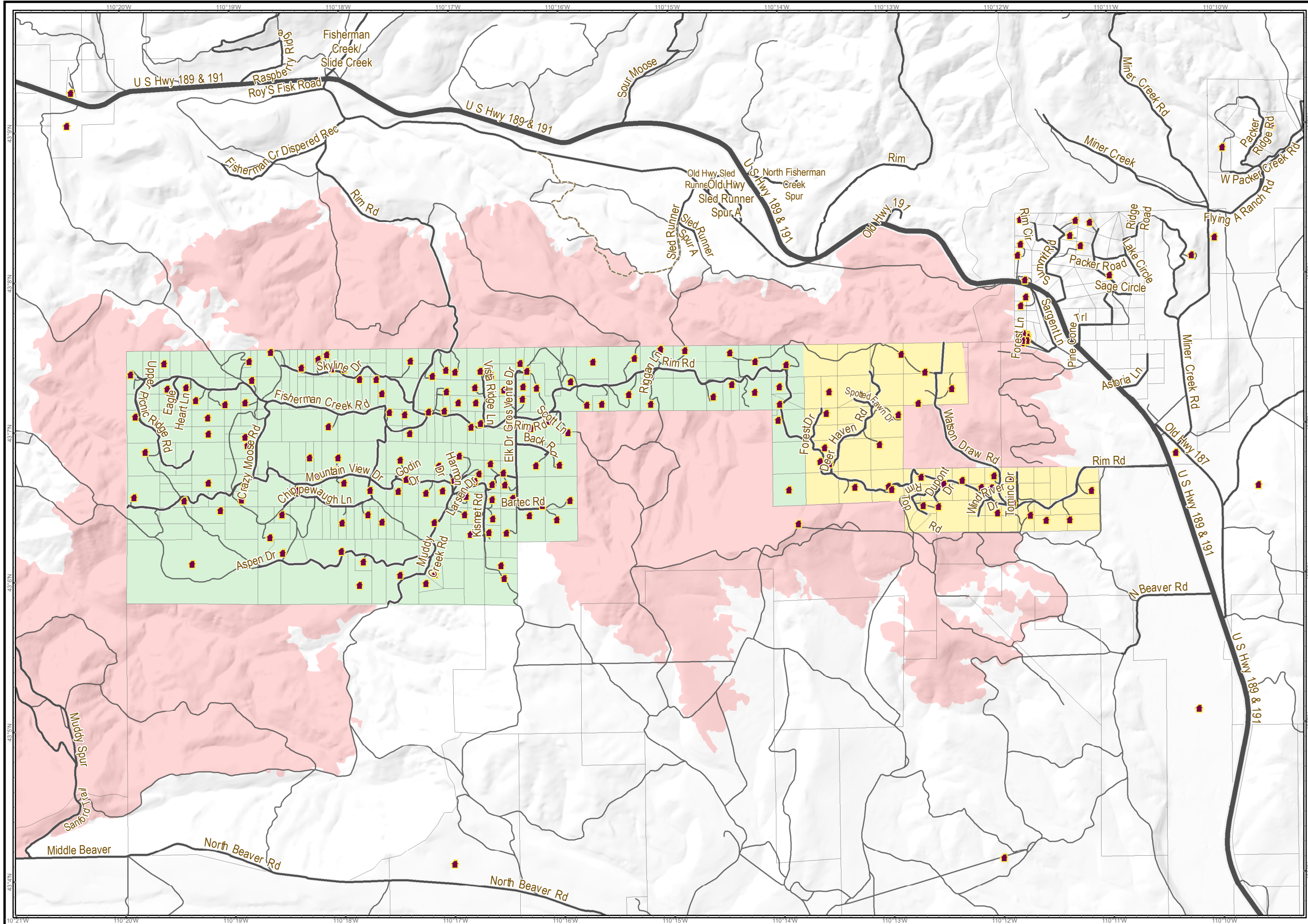
WY-BTF-001823

## Re-Entry

September 29, 2018

approximately 57,969 acres  
on September 28, 2226 hr

- fire area
- US Highway
- WY Highway
- County
- Local Road
- USFS Road
- Trail
- Re-entry Phase 1
- Re-entry Phase 2
- Parcel Boundary



Great Basin Team 2 GIS  
Author: Admin  
Date: 20180929 1145 hr  
Lat-Long Grid Ticks: 1' minute interval  
Projection: NAD83 UTM Zone12

