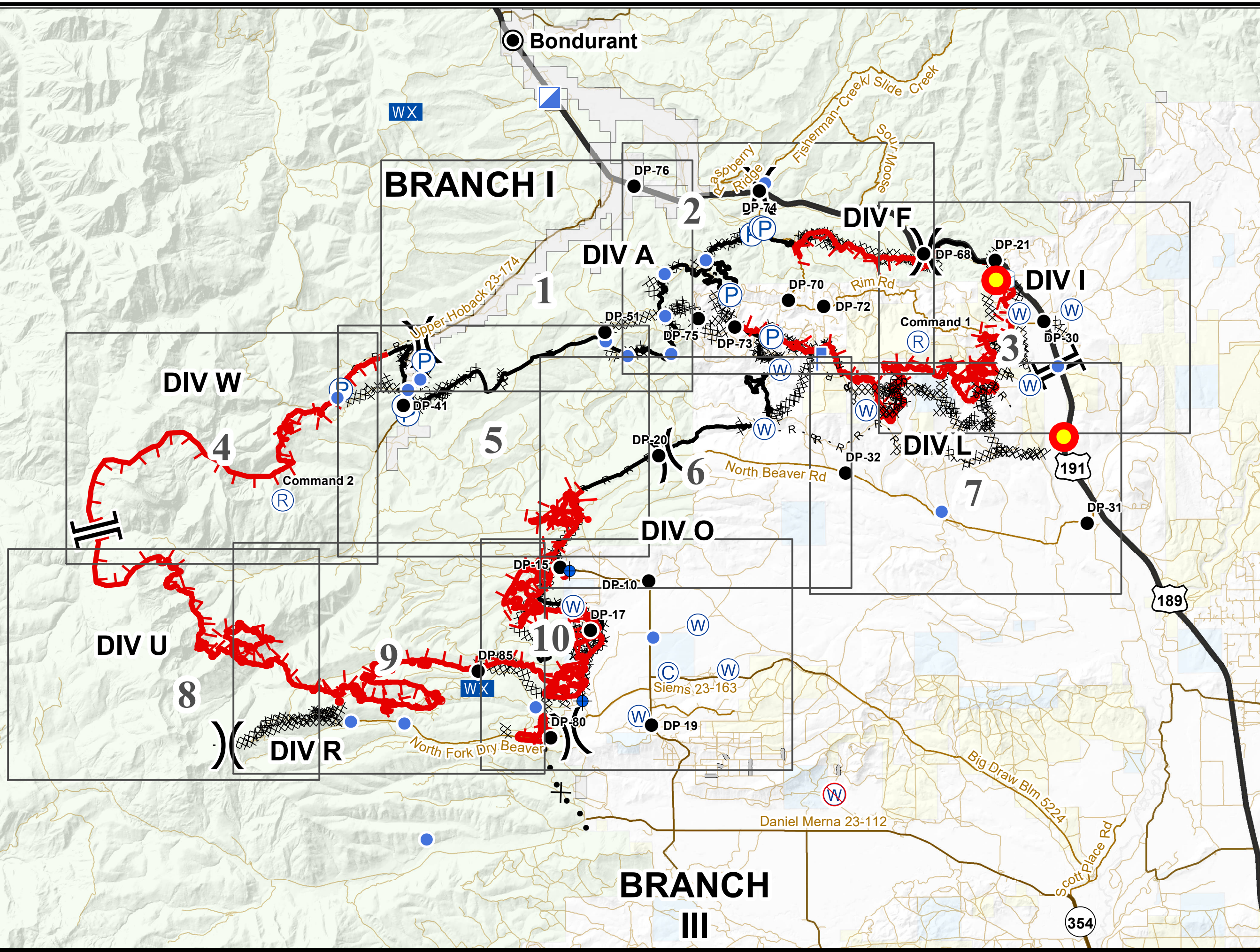


Roosevelt Fire
 WY-BTF-001823
IAP Overview Map
 September 29, 2018

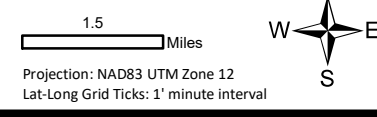
appx. 54,070 acres on
 September 27, 2029 hr



- Natural Gas Pumphouses
- Dip Site
- Drop Point
- Helibase
- Helispot
- Incident Command Post
- Lookout
- Mobile Weather Unit
- Pump
- Repeater
- Spot Fire
- Water Source
- Restricted Water Source
- Water Tank
- Division Break
- Branch Break
- Uncontrolled Fire Edge
- Completed Line
- Completed Dozer Line
- Completed Hand Line
- Road as Completed Line
- Access or Improved Road
- Line Break Completed
- Active Burnout
- Proposed Dozer Line



Great Basin Team 2 GIS
 Author: Ikobelt
 Date: 20180928 2208 hr

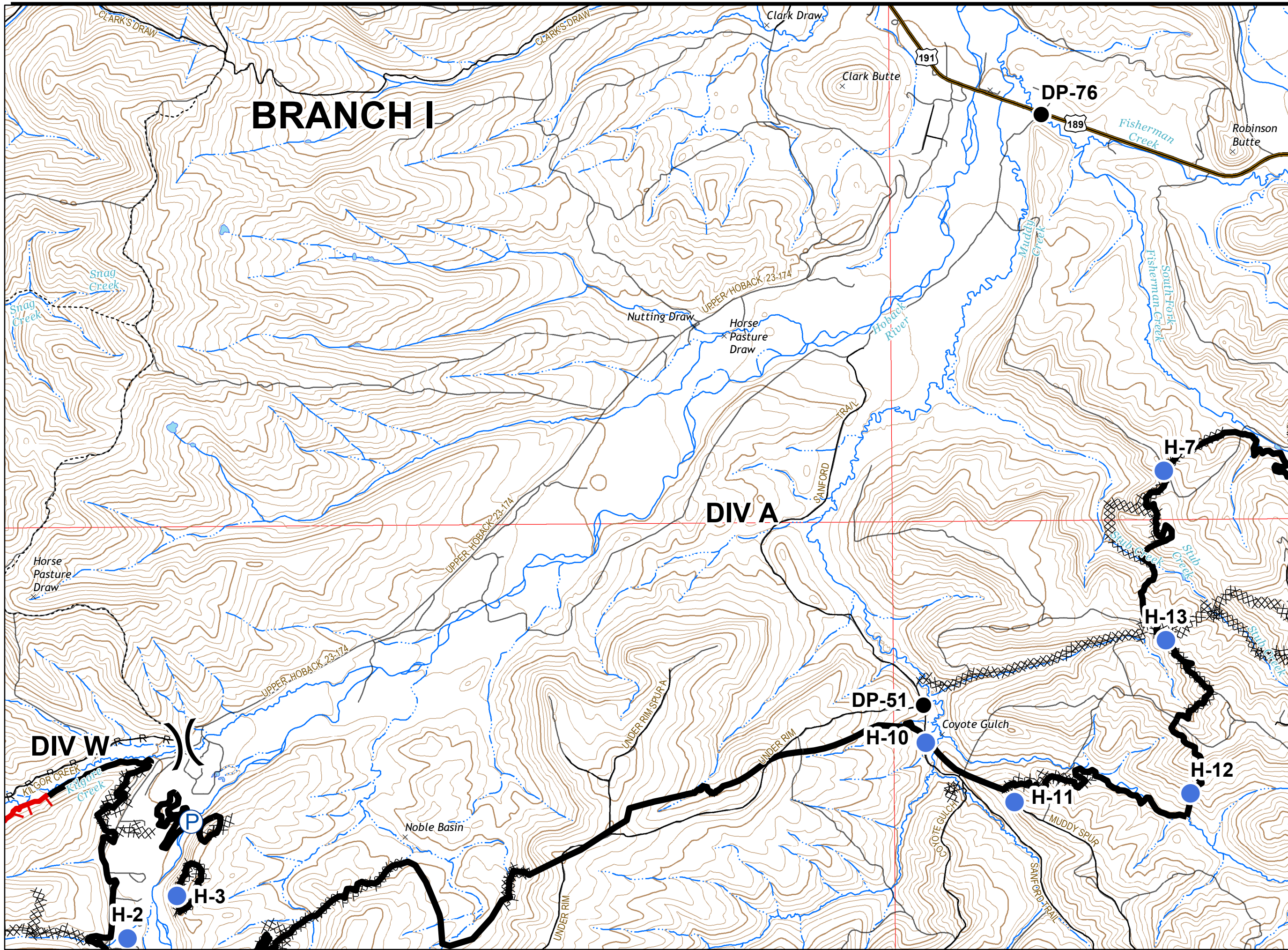


Roosevelt Fire
 WY-BTF-001823
IAP Tile 1
 September 29, 2018
 appx. 54,070 acres on
 September 27, 2029

BRANCH I

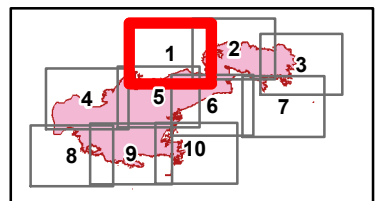
DIV A

DIV W



- Drop Point
- Helispot
- Pump
- Division Break

- Completed Line
- Uncontrolled Fire Edge
- Completed Dozer Line
- H - H Completed Hand Line
- R - R Road as Completed Line

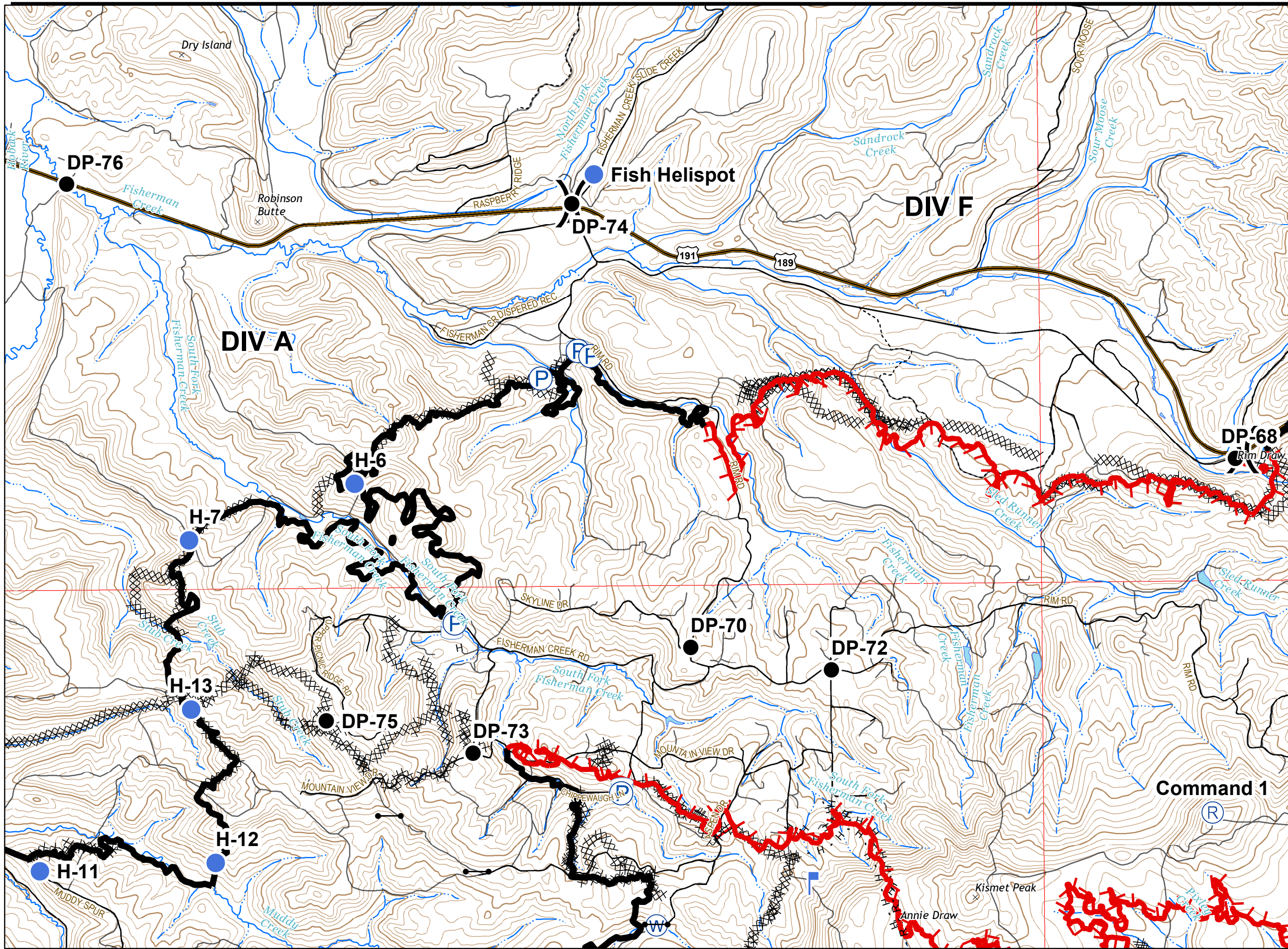


Great Basin Team 2 GIS
 Author: lkobelt
 Date: 20180928 2211 hr

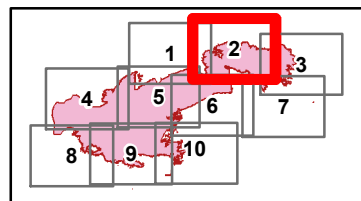
0.5 Miles
 Projection: NAD83 UTM Zone 12
 Lat-Long Grid Ticks: 1' minute interval


Roosevelt Fire
 WY-BTF-001823
IAP Tile 2
 September 29, 2018

appx. 54,070 acres on
 September 27, 2029




- Drop Point
- Gate
- Helispot
- ⌚ Lookout
- Ⓟ Pump
- Ⓡ Repeater
- Ⓜ Water Source
- Ⓜ Water Tank
-) Division Break
- Completed Line
- Uncontrolled Fire Edge
- XXXXX Completed Dozer Line
- H - H Completed Hand Line
- R - R Road as Completed Line
- Active Burnout















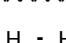
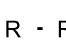



 Great Basin Team 2 GIS
 Author: lkobelt
 Date: 20180928 2211 hr

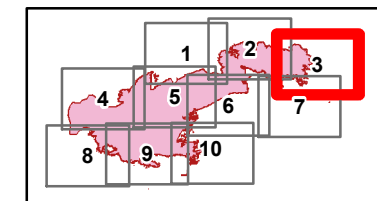
0.5 Miles
 Projection: NAD83 UTM Zone 12
 Lat-Long Grid Ticks: 1' minute interval



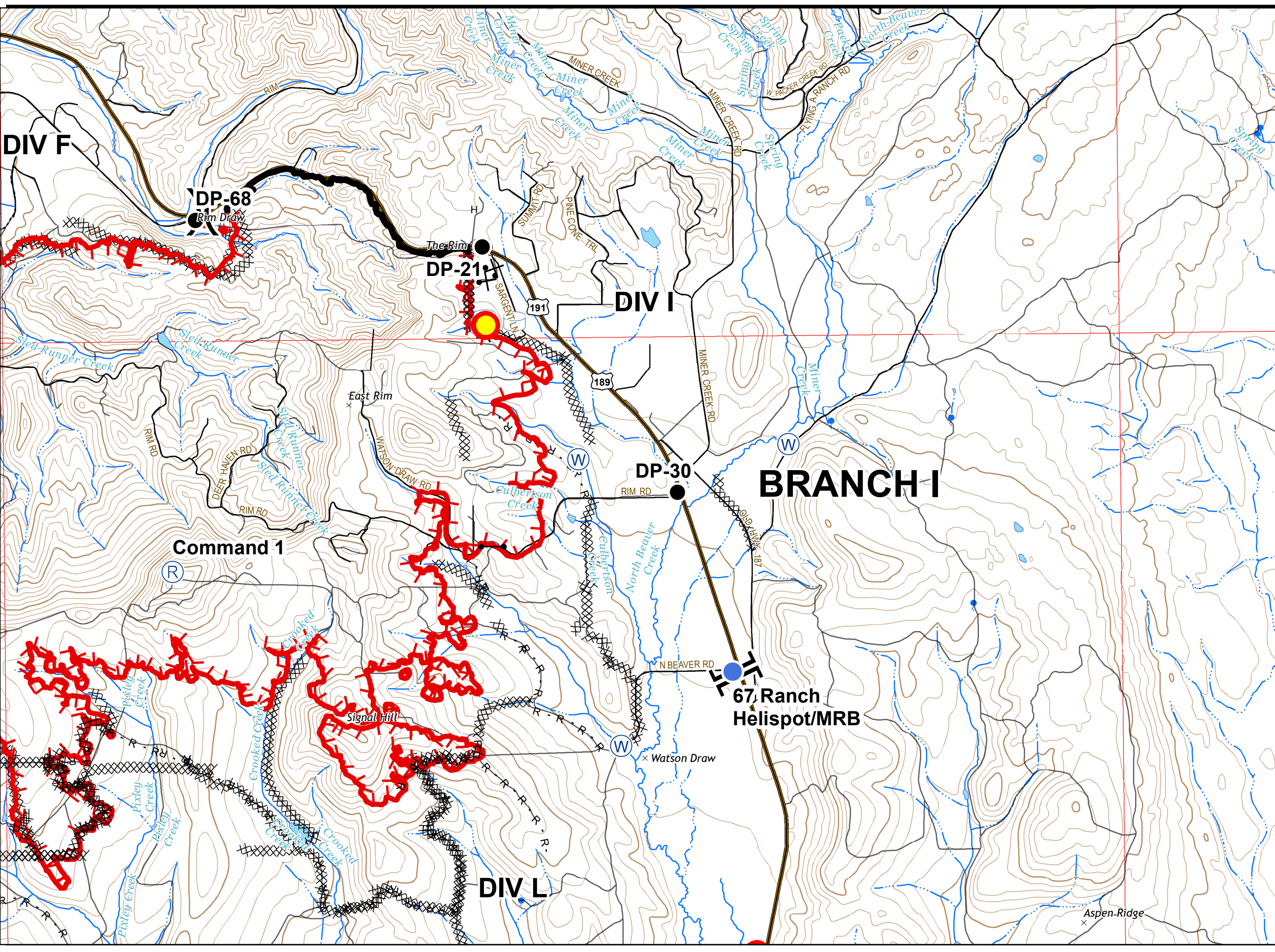
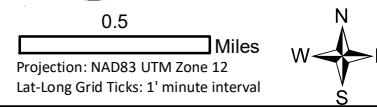
Roosevelt Fire
 WY-BTF-001823
IAP Tile 3
 September 29, 2018

appx. 54,070 acres on
 September 27, 2029

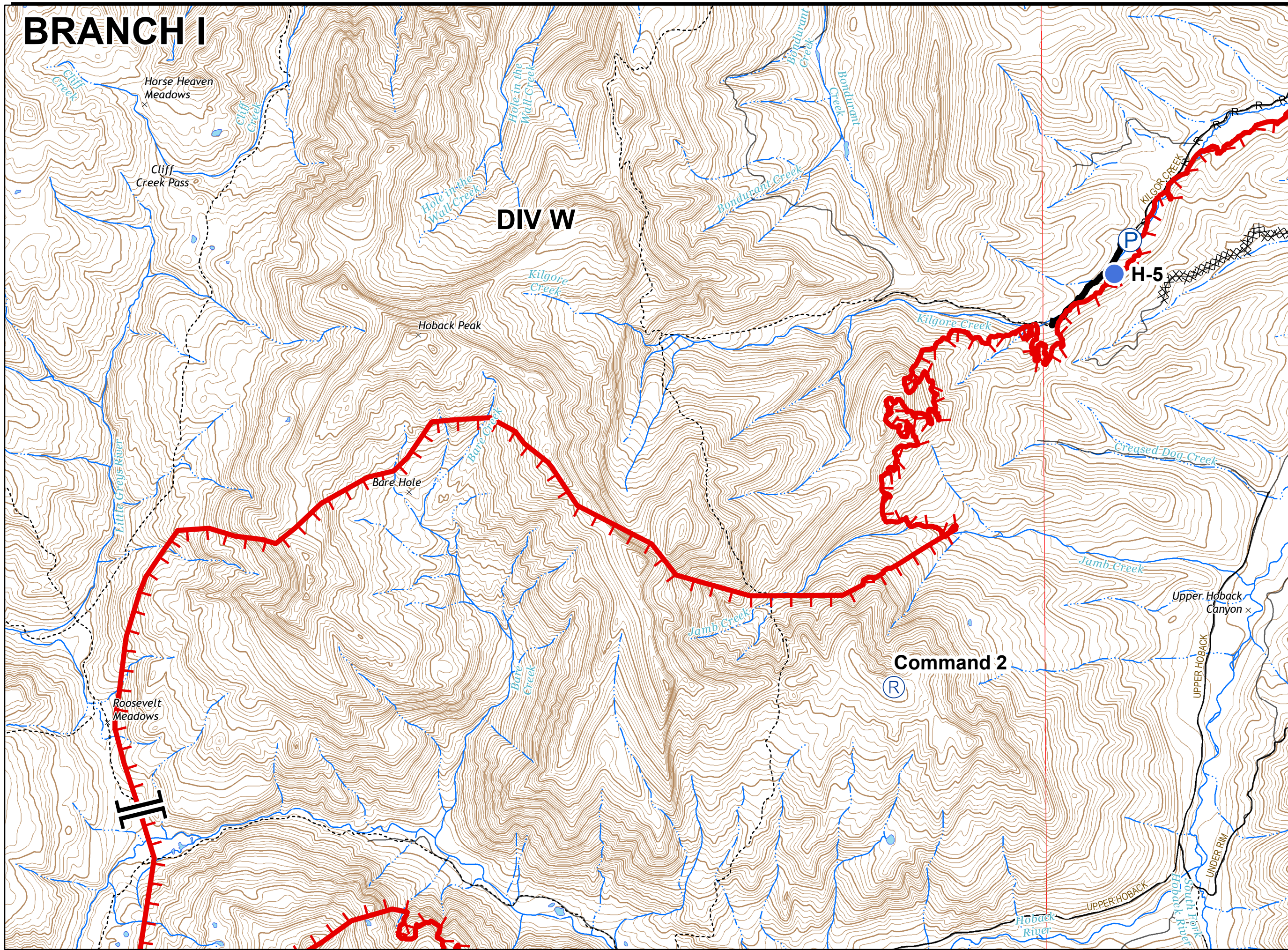
-  Natural Gas Pumphouse
-  Drop Point
-  Gate
-  Helispot
-  Pump
-  Repeater
-  Water Source
-  Water Tank
-  Division Break
-  Branch Break
-  Completed Line
-  Uncontrolled Fire Edge
-  Completed Dozer Line
-  H - H Completed Hand Line
-  R - R Road as Completed Line
-  Proposed Dozer Line










 Great Basin Team 2 GIS
 Author: lkobelt
 Date: 20180928 2212 hr

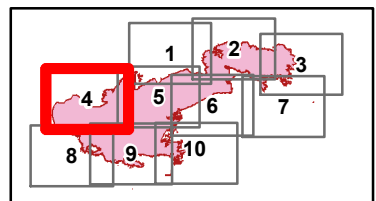



BRANCH I




Roosevelt Fire
WY-BTF-001823
IAP Tile 4
September 29, 2018
appx. 54,070 acres on
September 27, 2029

-  Helispot
-  Pump
-  Repeater
-  Branch Break
-  Completed Line
-  Uncontrolled Fire Edge
-  Completed Dozer Line
- R - R Road as Completed Line

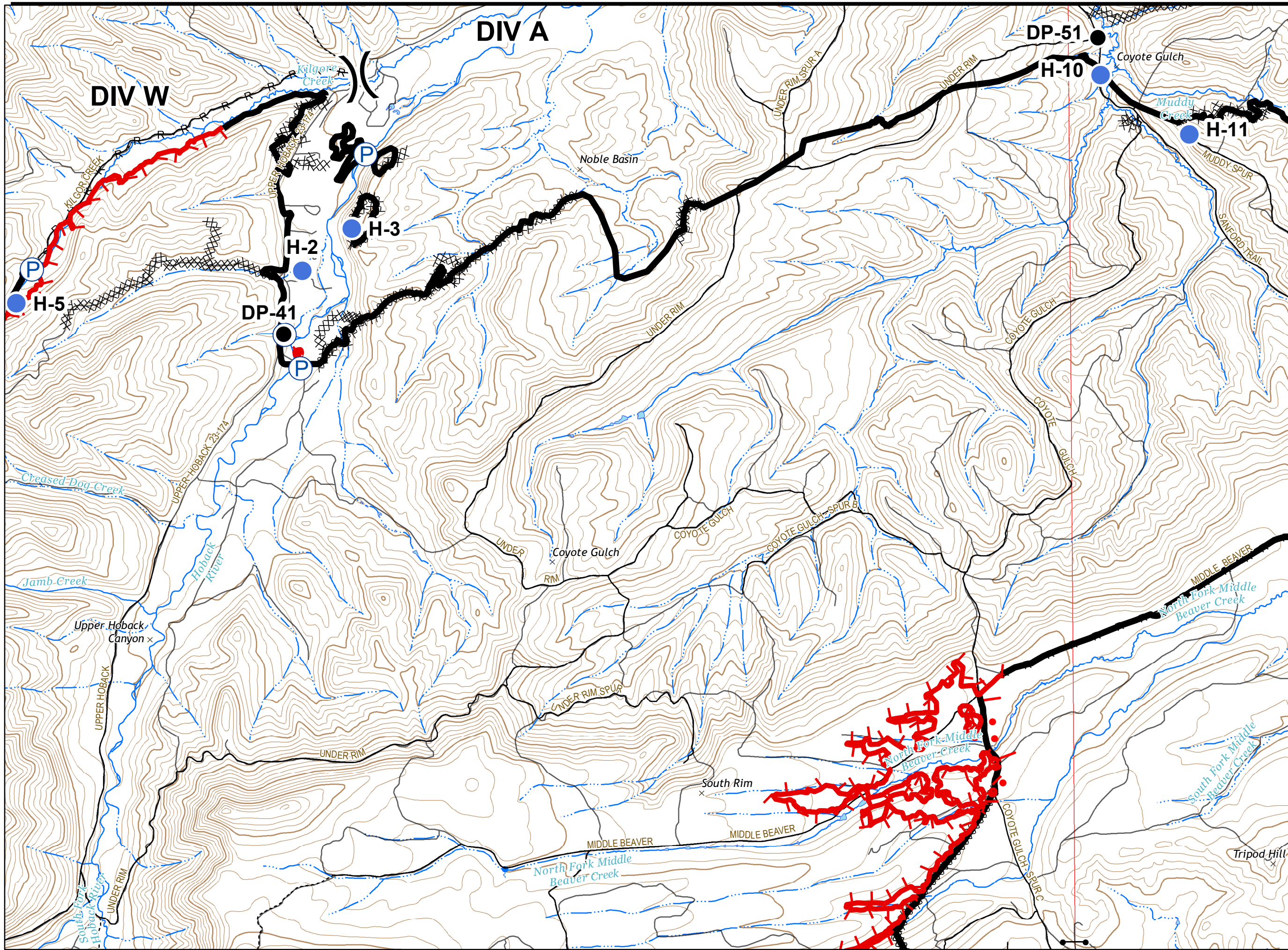


 Great Basin Team 2 GIS
Author: lkobelt
Date: 20180928 2214 hr

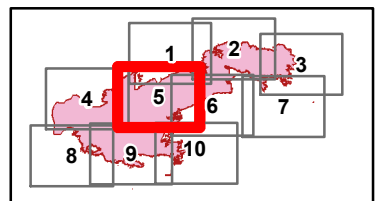
0.5 Miles
Projection: NAD83 UTM Zone 12
Lat-Long Grid Ticks: 1' minute interval



Roosevelt Fire
 WY-BTF-001823
IAP Tile 5
 September 29, 2018
 appx. 54,070 acres on
 September 27, 2029



- Drop Point
- Gate
- Helispot
- Pump
- Division Break
- Completed Line
- Uncontrolled Fire Edge
- Completed Dozer Line
- H - H Completed Hand Line
- R - R Road as Completed Line
- Active Burnout





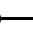








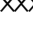

Great Basin Team 2 GIS
 Author: lkobelt
 Date: 20180928 2215 hr

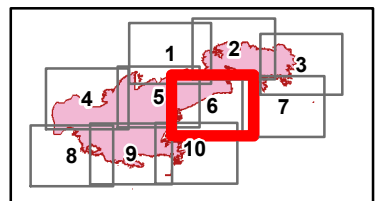

0.5 Miles

Projection: NAD83 UTM Zone 12
 Lat-Long Grid Ticks: 1' minute interval

Roosevelt Fire
 WY-BTF-001823
IAP Tile 6
 September 29, 2018

appx. 54,070 acres on
 September 27, 2029


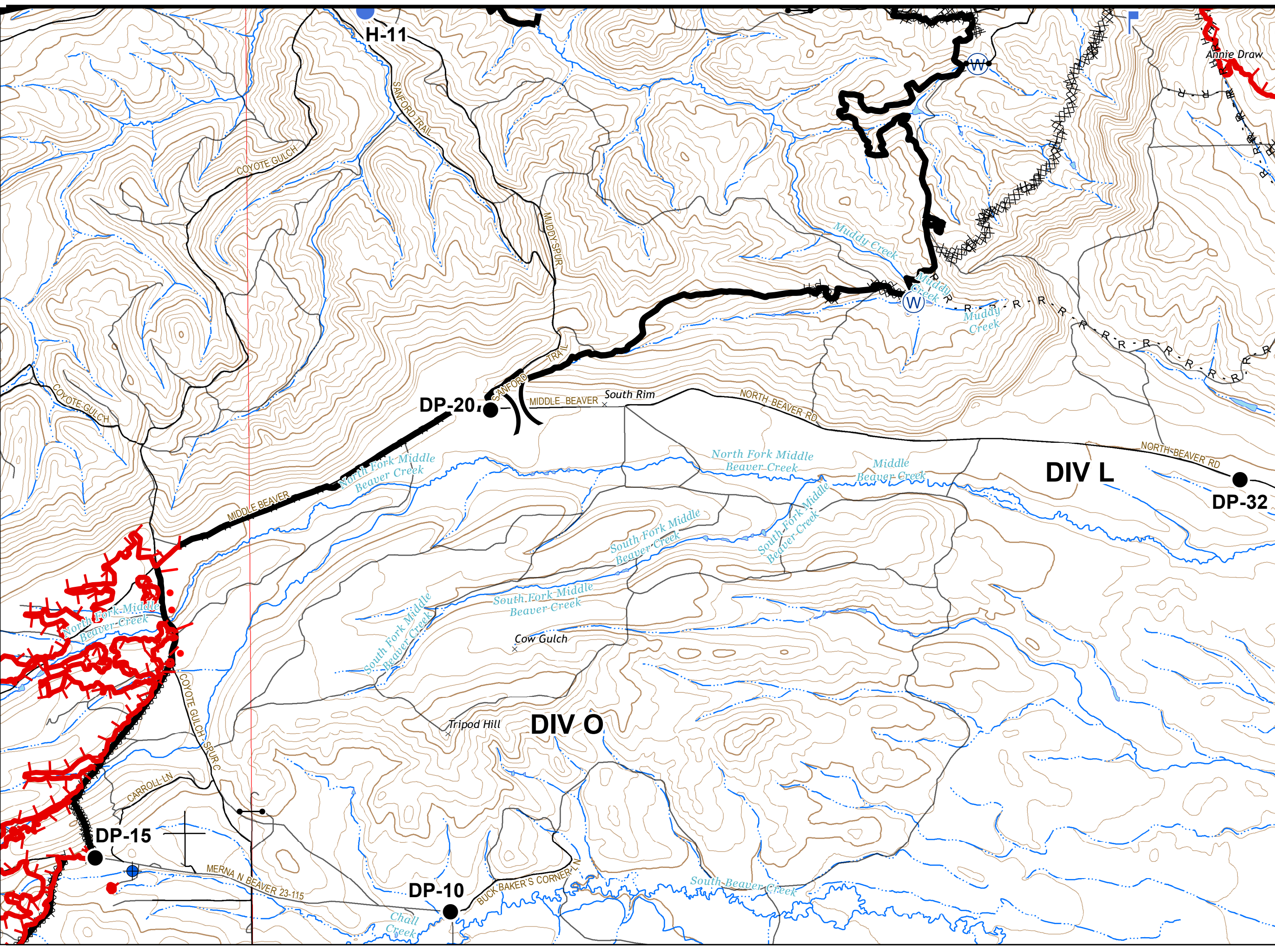
-  Dip Site
-  Drop Point
-  Gate
-  Helispot
-  Lookout
-  Water Source
-  Division Break
-  Completed Line
-  Uncontrolled Fire Edge
-  Completed Dozer Line
-  H - H Completed Hand Line
-  R - R Road as Completed Line
-  Active Burnout

Great Basin Team 2 GIS
 Author: lkobelt
 Date: 20180928 2216 hr









0.5 Miles

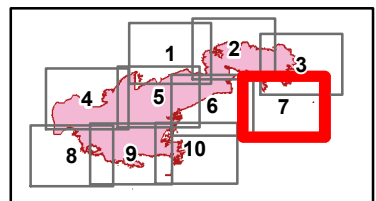
Projection: NAD83 UTM Zone 12
 Lat-Long Grid Ticks: 1' minute interval





Roosevelt Fire
 WY-BTF-001823
IAP Tile 7
 September 29, 2018


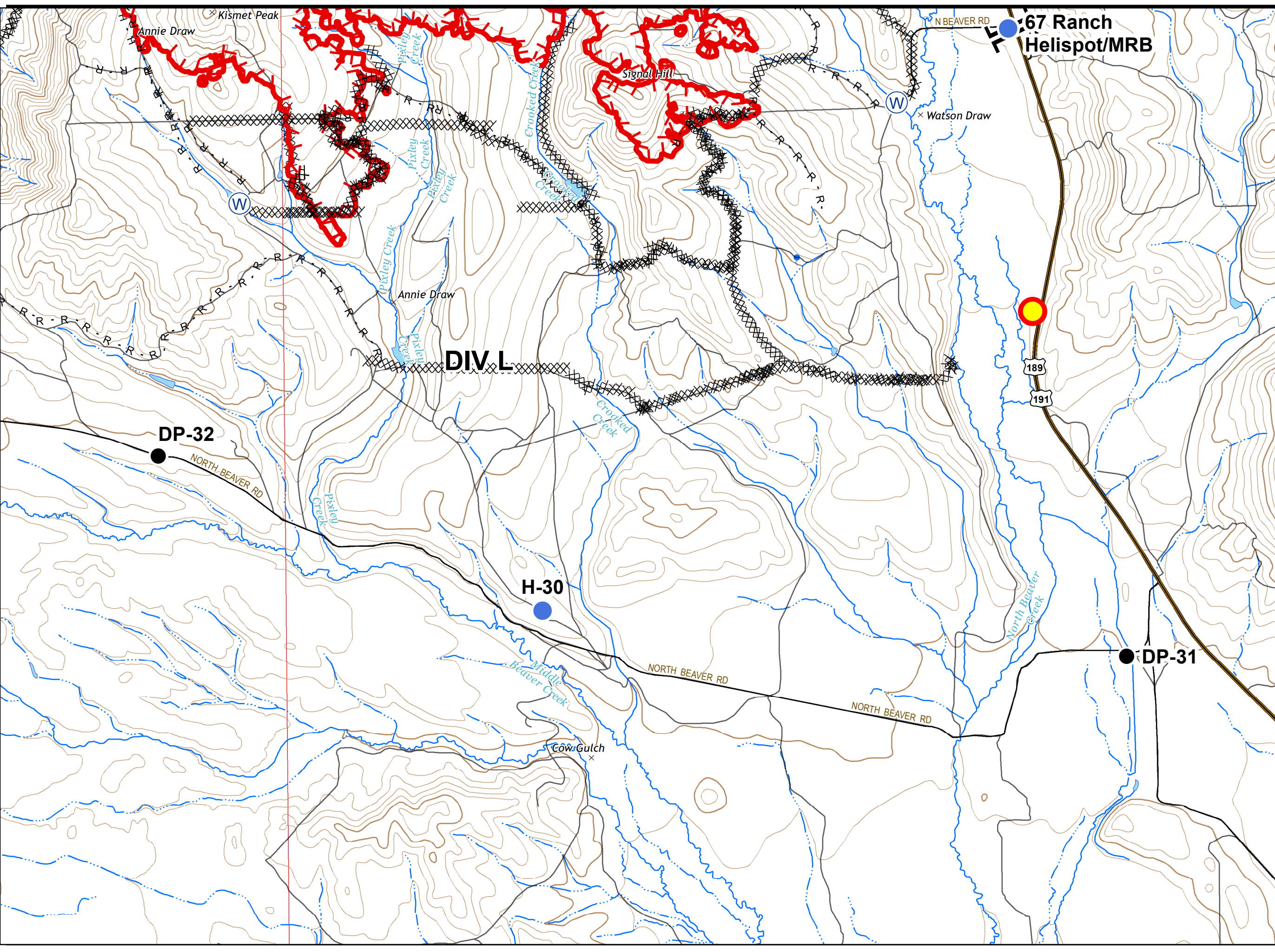
appx. 54,070 acres on
 September 27, 2029

-  Natural Gas Pumphouse
-  Drop Point
-  Helispot
-  Lookout
-  Water Source
-  Branch Break
-  Uncontrolled Fire Edge
-  Completed Dozer Line
- H - H Completed Hand Line
- R - R Road as Completed Line



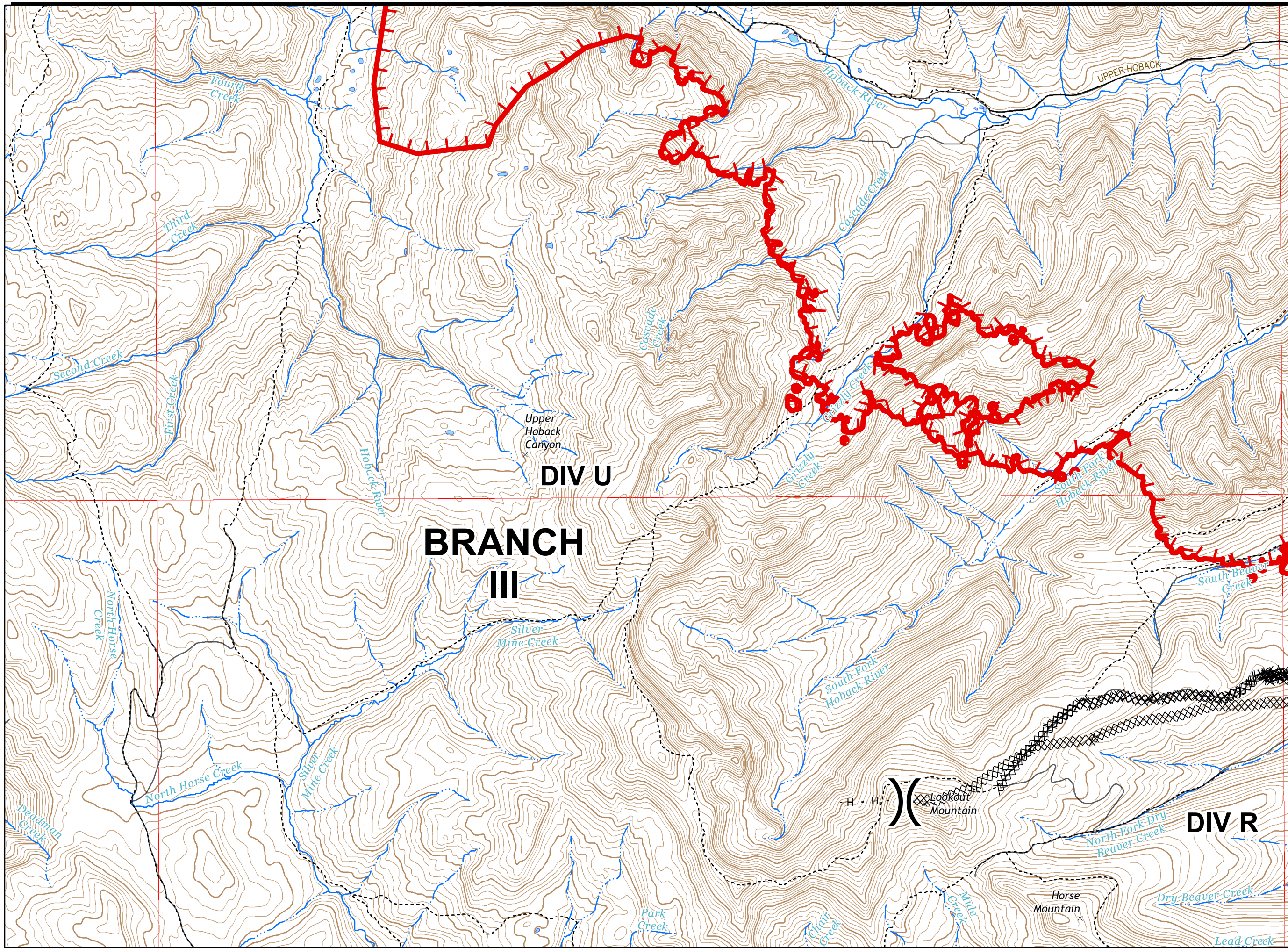
 Great Basin Team 2 GIS
 Author: lkobelt
 Date: 20180928 2216 hr

0.5 Miles
 Projection: NAD83 UTM Zone 12
 Lat-Long Grid Ticks: 1' minute interval

Roosevelt Fire
WY-BTF-001823
IAP Tile 8
September 29, 2018

appx. 54,070 acres on
September 27, 2029

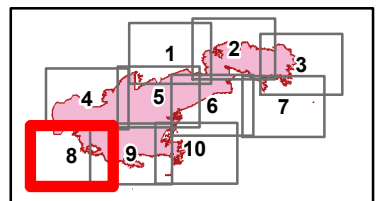


Division Break

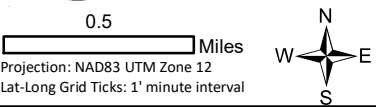
Uncontrolled Fire Edge

Completed Dozer Line

Completed Hand Line



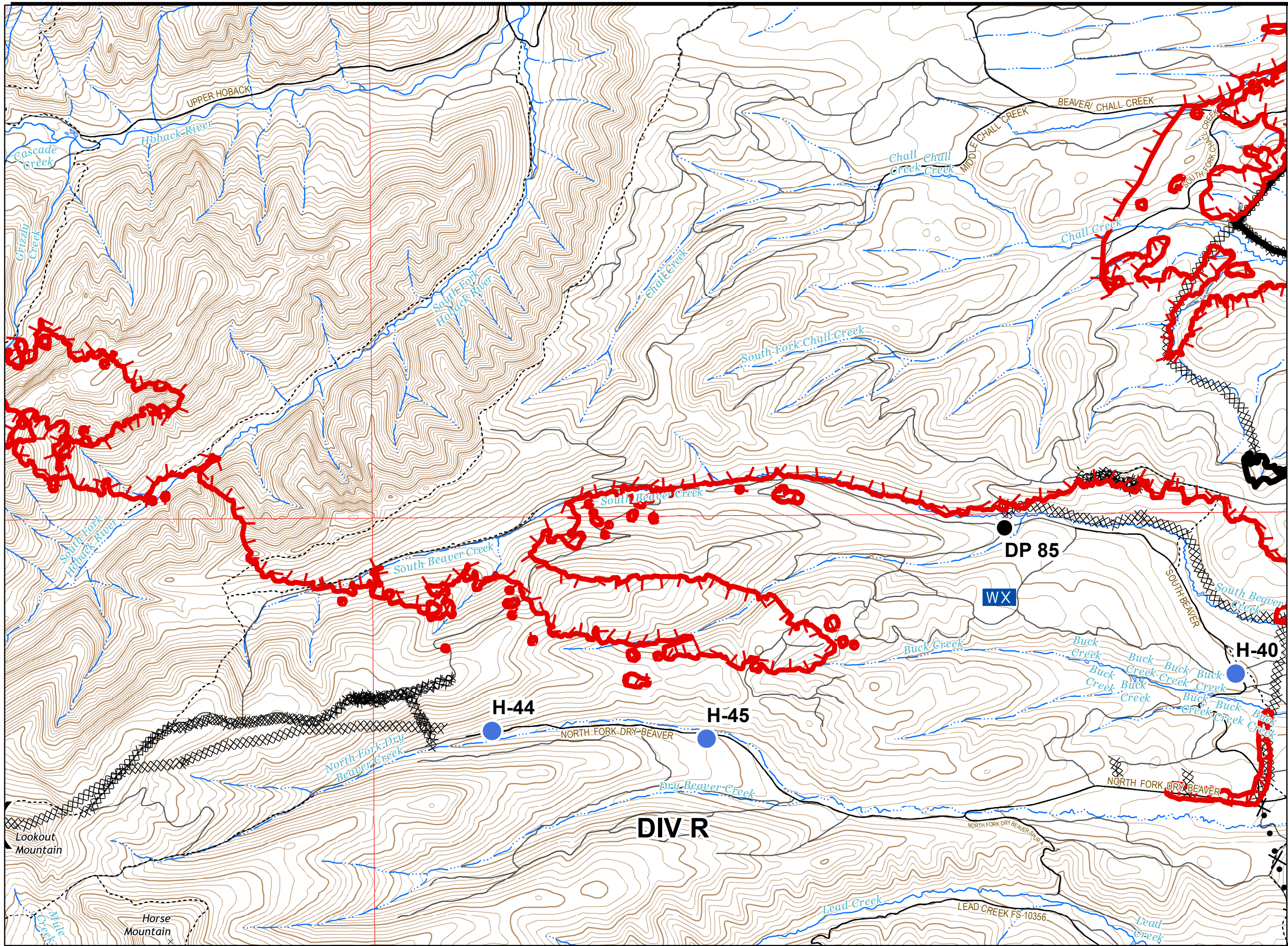
Great Basin Team 2 GIS
Author: lkobelt
Date: 20180928 2217 hr



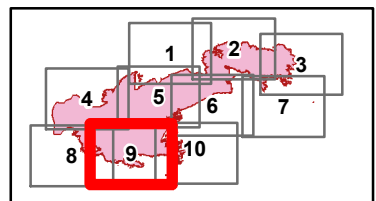
Roosevelt Fire
WY-BTF-001823
IAP Tile 9


September 29, 2018

appx. 54,070 acres on
September 27, 2019




- Drop Point
- Helispot
- WX Mobile Weather Unit
-) Division Break
- Completed Line
- ┌ Uncontrolled Fire Edge
- XXXXX Completed Dozer Line
- ⊗ Proposed Dozer Line



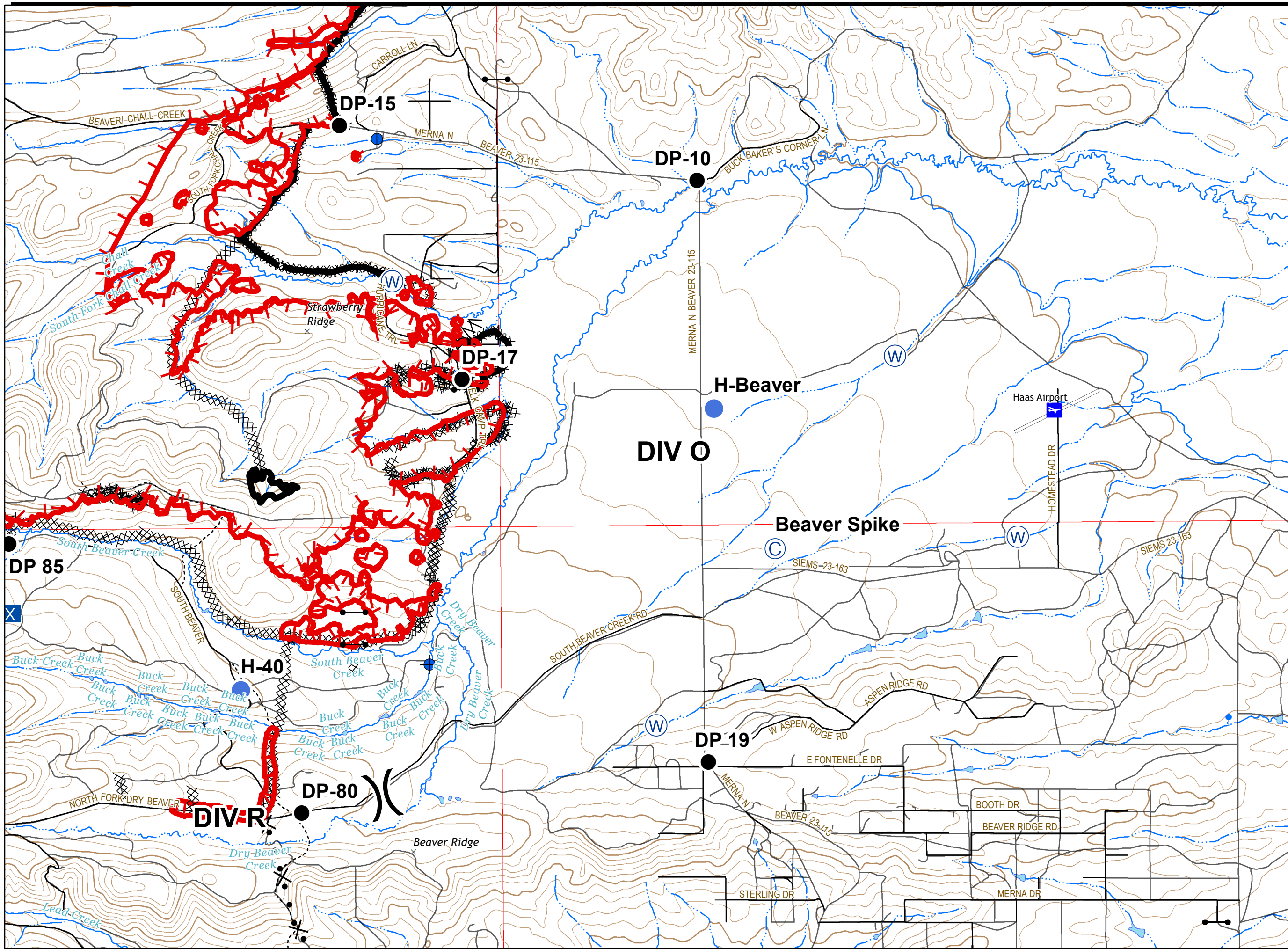
 Great Basin Team 2 GIS
Author: lkobelt
Date: 20180928 2219 hr

0.5 Miles
Projection: NAD83 UTM Zone 12
Lat-Long Grid Ticks: 1' minute interval

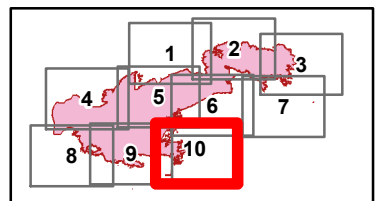


Roosevelt Fire
 WY-BTF-001823
IAP Tile 10
 September 29, 2018

appx. 54,070 acres on
 September 27, 2018



- Camp
- Dip Site
- Drop Point
- Gate
- Helispot
- Mobile Weather Unit
- Water Source
- Division Break
- Completed Line
- Uncontrolled Fire Edge
- Completed Dozer Line
- Line Break Completed
- Proposed Dozer Line



Great Basin Team 2 GIS
 Author: lkobelt
 Date: 20180928 2219 hr

0.5 Miles
 Projection: NAD83 UTM Zone 12
 Lat-Long Grid Ticks: 1' minute interval