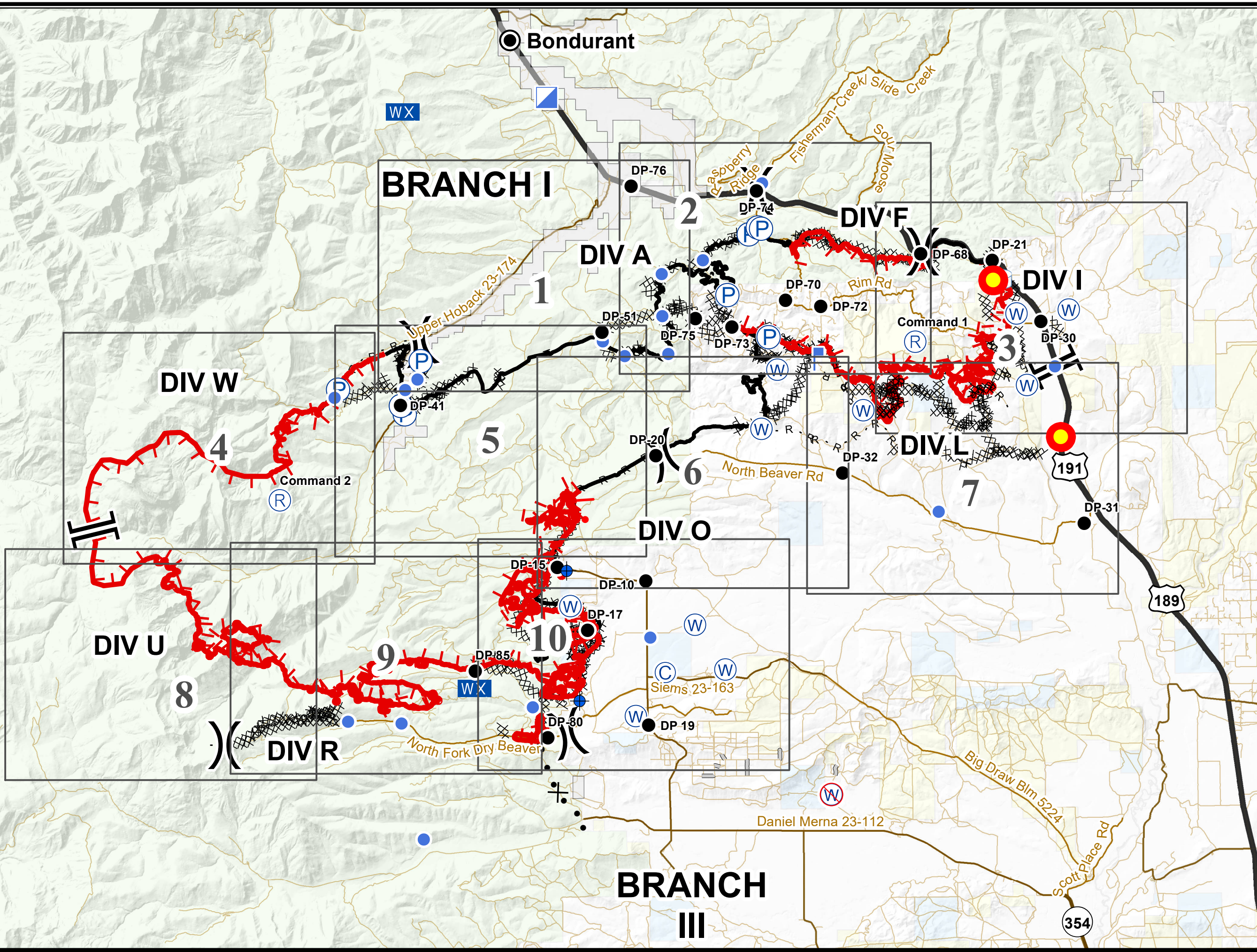



Roosevelt Fire
 WY-BTF-001823
IAP Overview Map
 September 29, 2018

appx. 54,070 acres on
 September 27, 2029 hr




- Natural Gas Pumphouses
- Dip Site
- Drop Point
- Helibase
- Helispot
- Incident Command Post
- Lookout
- Mobile Weather Unit
- Pump
- Repeater
- Spot Fire
- Water Source
- Restricted Water Source
- Water Tank
- Division Break
- Branch Break
- Uncontrolled Fire Edge
- Completed Line
- Completed Dozer Line
- Completed Hand Line
- Road as Completed Line
- Access or Improved Road
- Line Break Completed
- Active Burnout
- Proposed Dozer Line



Great Basin Team 2 GIS
 Author: Ikobelt
 Date: 20180928 2208 hr

1.5 Miles



Projection: NAD83 UTM Zone 12
 Lat-Long Grid Ticks: 1' minute interval