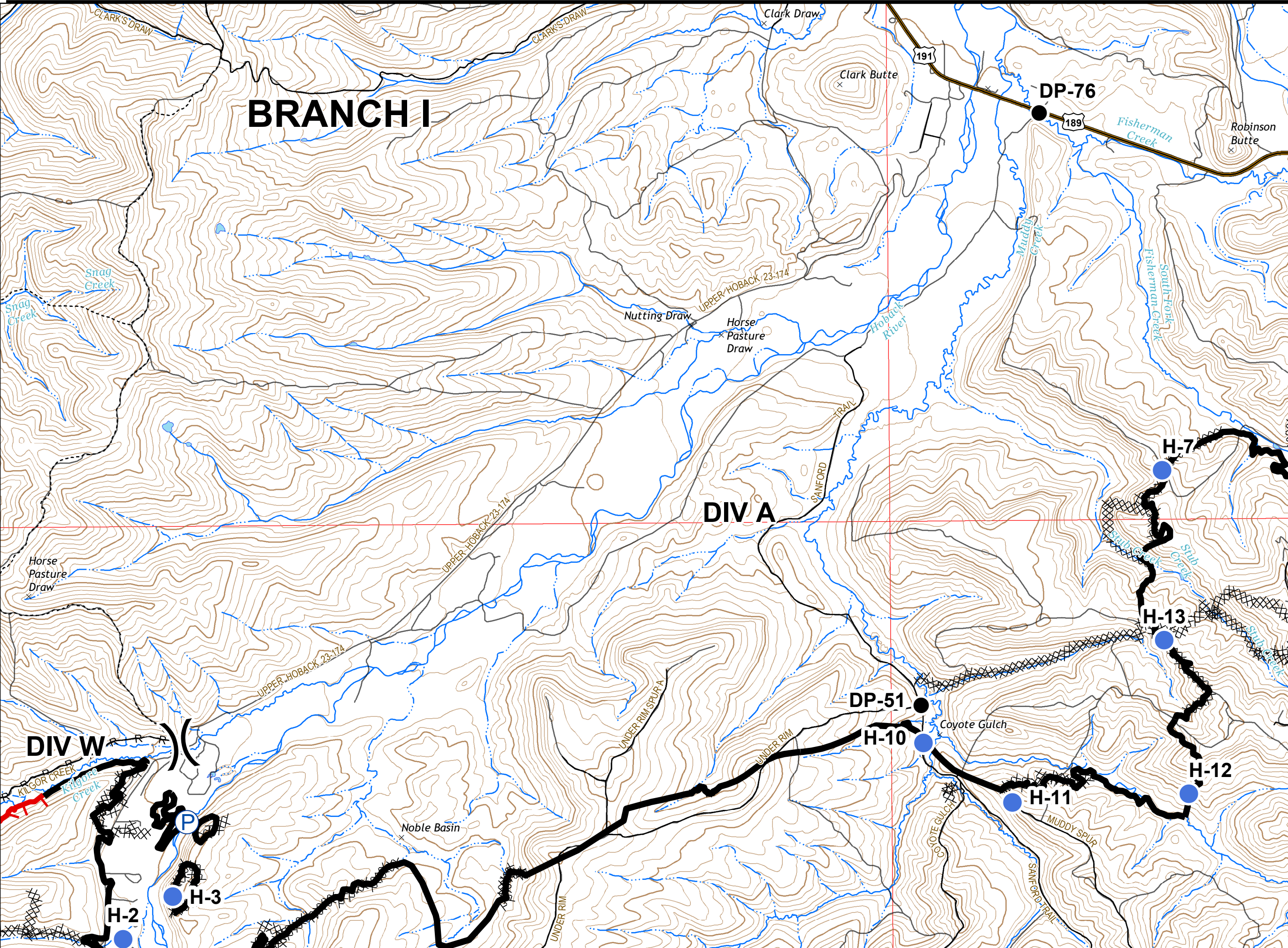


Roosevelt Fire
 WY-BTF-001823
IAP Tile 1
 September 29, 2018
 appx. 54,070 acres on
 September 27, 2029

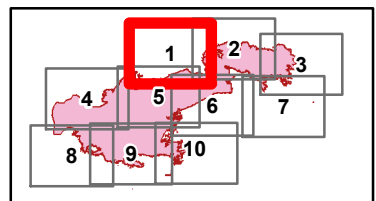
BRANCH I

DIV A

DIV W



- Drop Point
- Helispot
- P Pump
-) Division Break
- Completed Line
- T Uncontrolled Fire Edge
- XXXXX Completed Dozer Line
- H - H Completed Hand Line
- R - R Road as Completed Line



Great Basin Team 2 GIS
 Author: lkobelt
 Date: 20180928 2211 hr

0.5 Miles
 Projection: NAD83 UTM Zone 12
 Lat-Long Grid Ticks: 1' minute interval