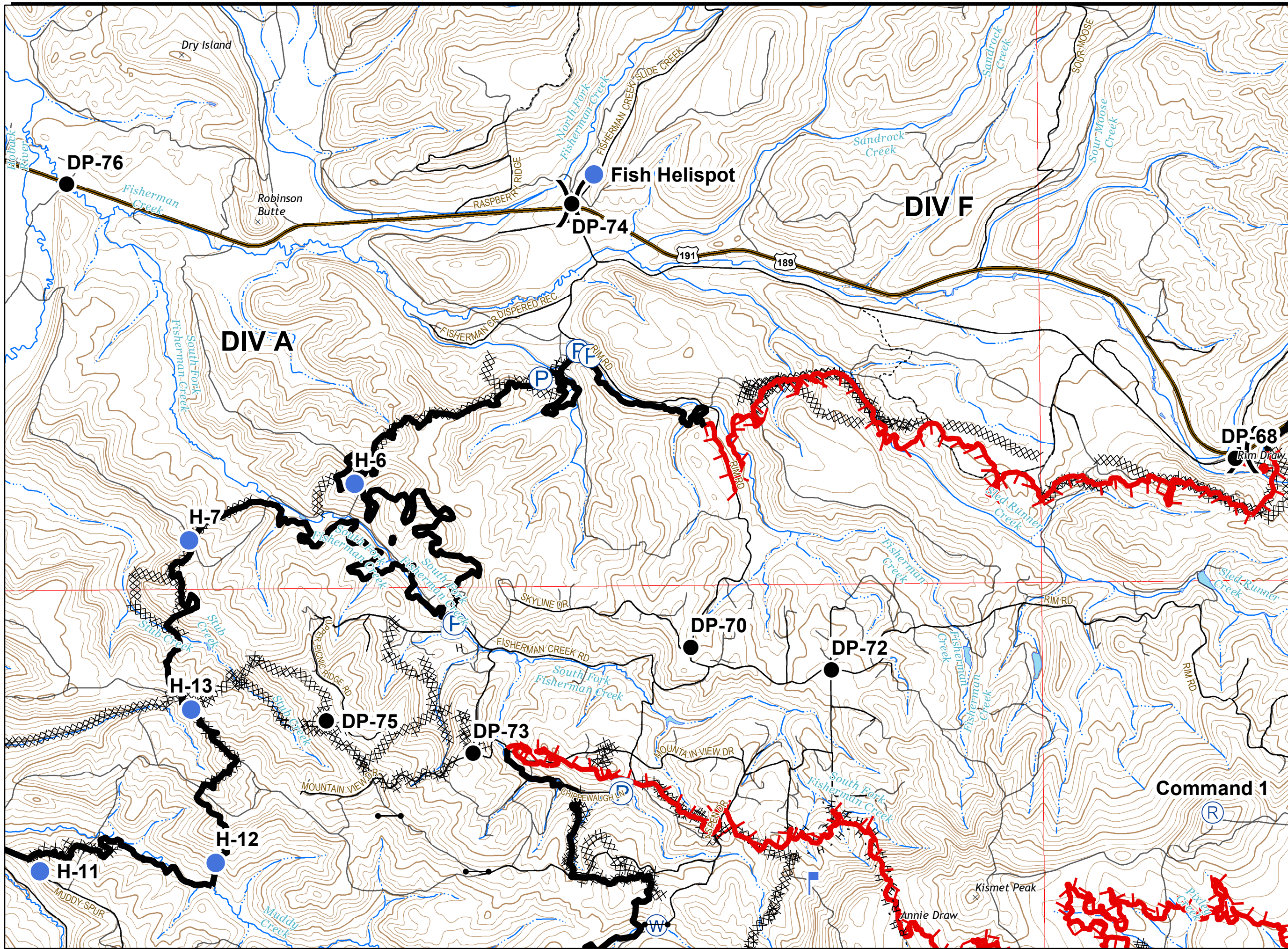


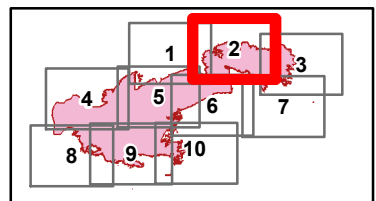
Roosevelt Fire
 WY-BTF-001823
IAP Tile 2
 September 29, 2018

appx. 54,070 acres on
 September 27, 2029



- Drop Point
- Gate
- Helispot
- Lookout
- Pump
- Repeater
- Water Source
- Water Tank
- Division Break

- Completed Line
- Uncontrolled Fire Edge
- Completed Dozer Line
- H - H Completed Hand Line
- R - R Road as Completed Line
- Active Burnout



Great Basin Team 2 GIS
 Author: lkobelt
 Date: 20180928 2211 hr

0.5 Miles
 Projection: NAD83 UTM Zone 12
 Lat-Long Grid Ticks: 1' minute interval