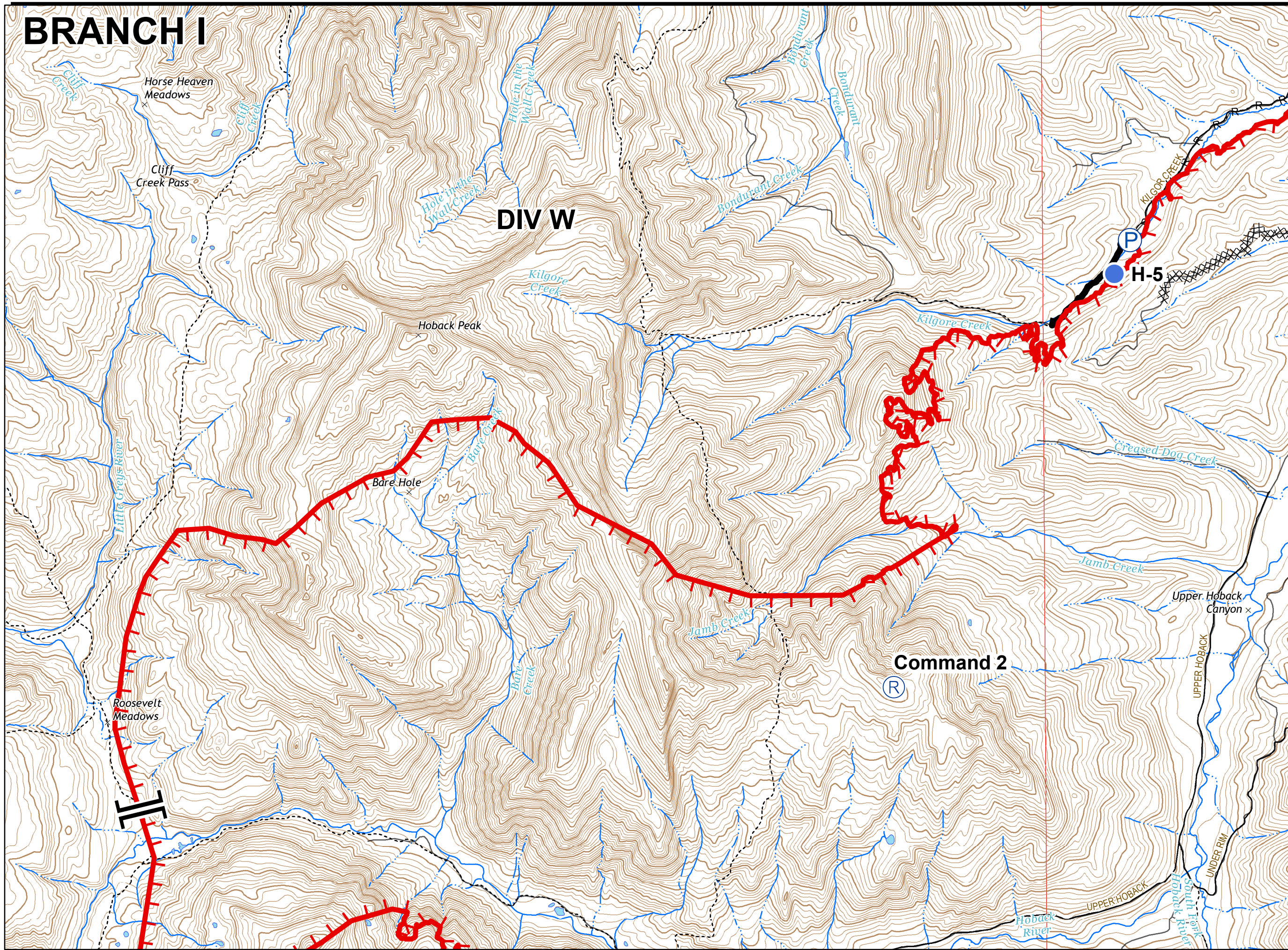







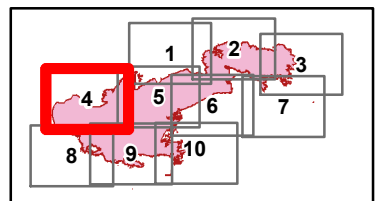



BRANCH I



Roosevelt Fire
WY-BTF-001823
IAP Tile 4
September 29, 2018
appx. 54,070 acres on
September 27, 2029

-  Helispot
-  Pump
-  Repeater
-  Branch Break
-  Completed Line
-  Uncontrolled Fire Edge
-  Completed Dozer Line
- R - R Road as Completed Line



 Great Basin Team 2 GIS
Author: lkobelt
Date: 20180928 2214 hr

0.5 Miles
Projection: NAD83 UTM Zone 12
Lat-Long Grid Ticks: 1' minute interval

