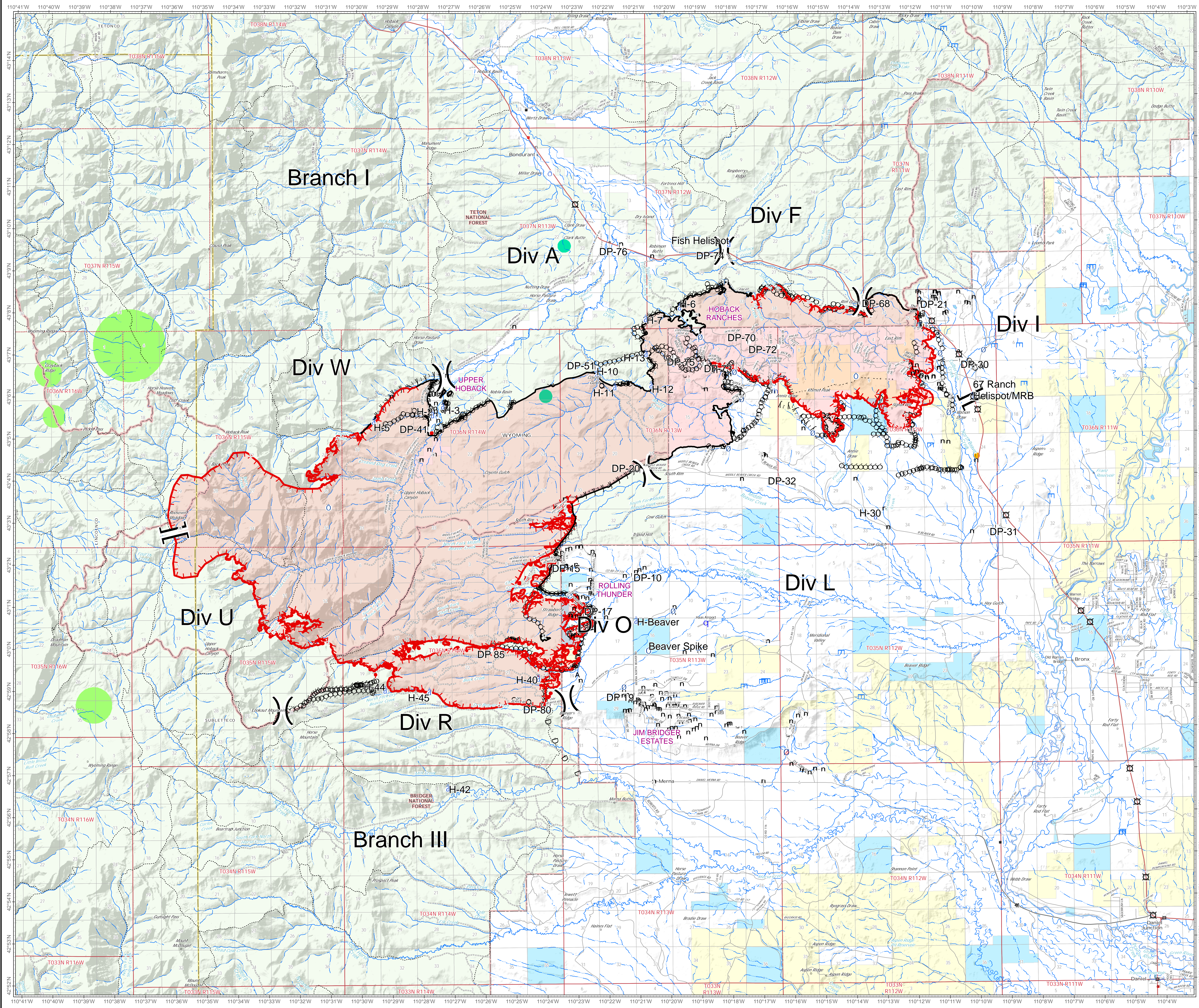


Roosevelt Fire WY-BTF-001823 Operations September 29, 2018

approximately 57,969 acres
as of 09/28 at 2029 hr



- Camp
- ▲ Dip Site
- ⌈ Drop Point
- ⌋ Gate
- ⊕ Helispot
- ⊕ Incident Command Post
- ⊕ Lookout
- ⊕ Mobile Weather Unit
- ⊕ Repeater
- ⊕ Water Source
- ⊕ Water Tank
- ⊕ Restricted Water Source
- n Value at Risk
-) (Division Break
- || Branch Break
- Uncontrolled Fire Edge
- Completed Line
- ⊕ Completed Dozer Line
- ⊕ Completed Hand Line
- ⊕ Road as Completed Line
- ⊕ Line Break Completed
- ⊕ Active Burnout
- ⊕ Proposed Dozer Line
- Highlighted Manmade Feature
- Forest Service
- Bureau of Land Management
- Private
- State
- Heavy Equipment Avoidance
- Equipment and Retardant Avoidance



Great Basin Team 2 GIS
Author: bilhiva
Date: 20180929 1003 hr
File: Operations_30468_land_2018_Roosevelt_WYBTF001823.mxd

Lat-Long Grid Ticks: 1' minute interval
Projection: NAD83 UTM Zone 12

