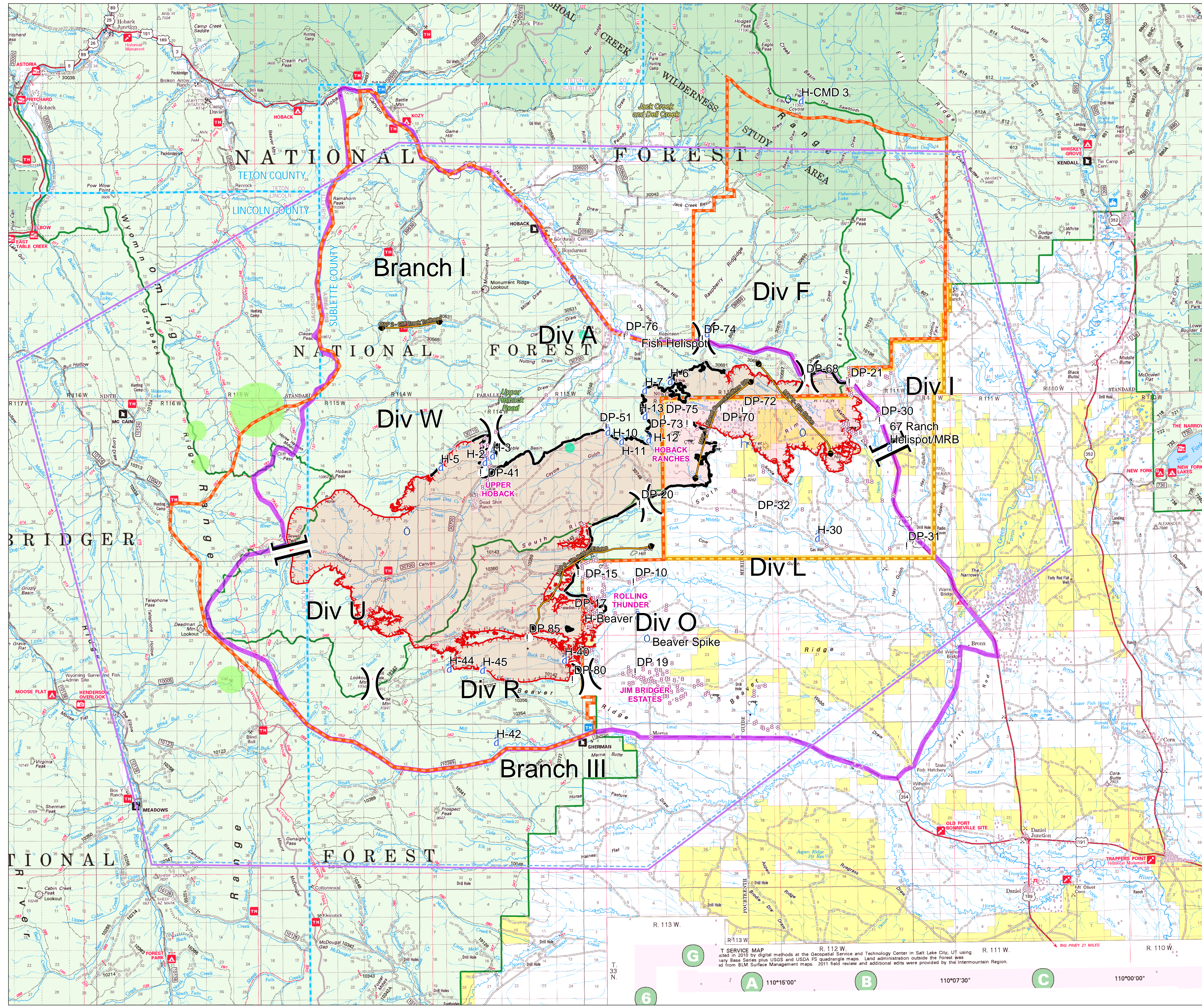


Roosevelt Fire WY-BTF-001823 Planning September 29, 2018

approximately 57,969 acres
as of 09/28 at 2226 hr



- [] Branch Break
-) (Division Break
- ! Drop Point
- Incident Command Post
- Camp
- h Lookout
- Repeater
- 8 Value at Risk
- Uncontrolled Fire Edge
- Completed Line
- Temporary Flight Restriction
- Planning Area as of September 201
- Management Action Point (MAP)
- USFS Closure Area as of September 22
- BLM Closure Area as of September 20
- County Boundary
- Forest Ranger District Boundary
- Private Inholdings near USFS
- Sage Grouse Leaks
- Heavy Equipment and Retardant Avoidance Area
- T and E Plant - Payson's Bladderpod
- Heavy Equipment Avoidance Area

MAP 2 – Cliff Creek Trailhead
 CONDITIONS:
 Fire approaches the cliff creek trailhead/end of the cliff creek road(30530 road)
 ACTIONS:
 Consider a road/area closure for the cliff creek drainage
 RESOURCES:
 Two type 6 engines
 One Saz2

MAP 3 – Kismet Communications Site
 CONDITIONS:
 Fire threatens the communications site on Kismet Peak
 ACTIONS:
 Consider implementing actions to protect the repeater infrastructure.
 RESOURCES:
 This is an important interagency VAR, more specific info will be added

MAP 5 – Rim Station
 CONDITIONS:
 Fire approaches Highway 189/191 north and west of Kismet communication site
 ACTIONS:
 Recommend evacuation of Rim Station
 Consider the need for closure of Highway 189/191
 RESOURCES:
 (none specified)

MAP 6 – Jim Bridger Estates
 CONDITIONS:
 Fire Reaches Rolling Thunder
 ACTIONS:
 Recommend evacuation of Jim Bridger Estates
 RESOURCES:
 (none specified)



T SERVICE MAP
 R. 112 W. R. 111 W. R. 110 W.
 T. 33 N.
 110°15'00" 110°07'30" 110°00'00"
 0 0.5 1 2 3 4 Miles