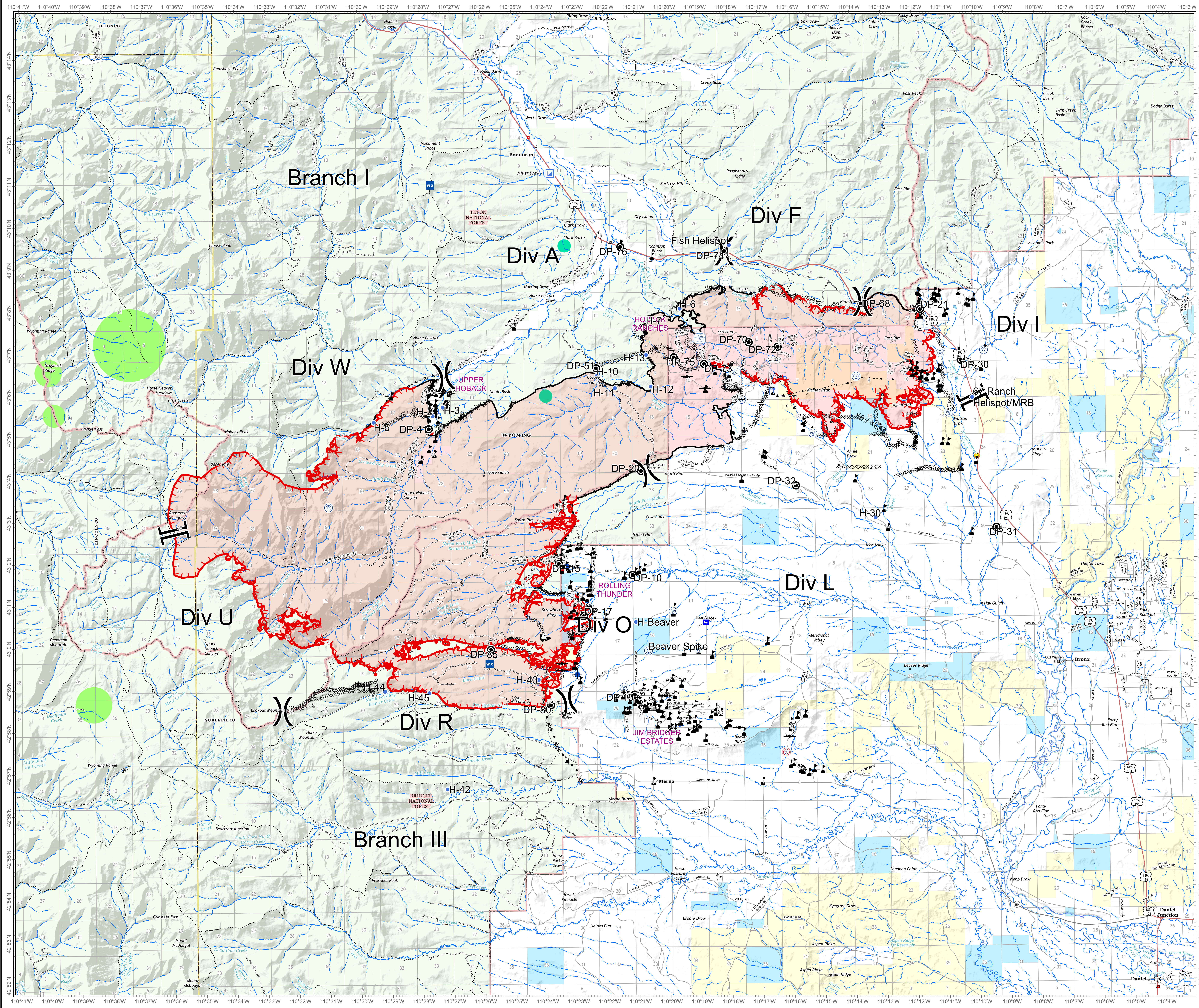



Roosevelt Fire
 WY-BTF-001823
Planning/Ops
 September 29, 2018


approximately 57,969 acres
 as of 09/28 at 2029 hr



- Camp
- Dip Site
- Drop Point
- Gate
- Helispot
- Incident Command Post
- Lookout
- Mobile Weather Unit
- Repeater
- Water Source
- Water Tank
- Restricted Water Source
- Value at Risk
- Division Break
- Branch Break
- Uncontrolled Fire Edge
- Completed Line
- Completed Dozer Line
- Completed Hand Line
- Road as Completed Line
- Line Break Completed
- Active Burnout
- Proposed Dozer Line
- Highlighted Manmade Feature
- Forest Service
- Bureau of Land Management
- Private
- State



Great Basin Team 2 GIS
 Author: mpanunto
 Date: 20180929 0435Z
 File: Planning_Ops_35448_land_2018_Roosevelt_WYBTF001823.mxd



Roosevelt Maps
bit.ly/rooseveltfire

Lat-Long Grid Ticks: 1 minute interval
 Projection: NAD83 UTM Zone12

