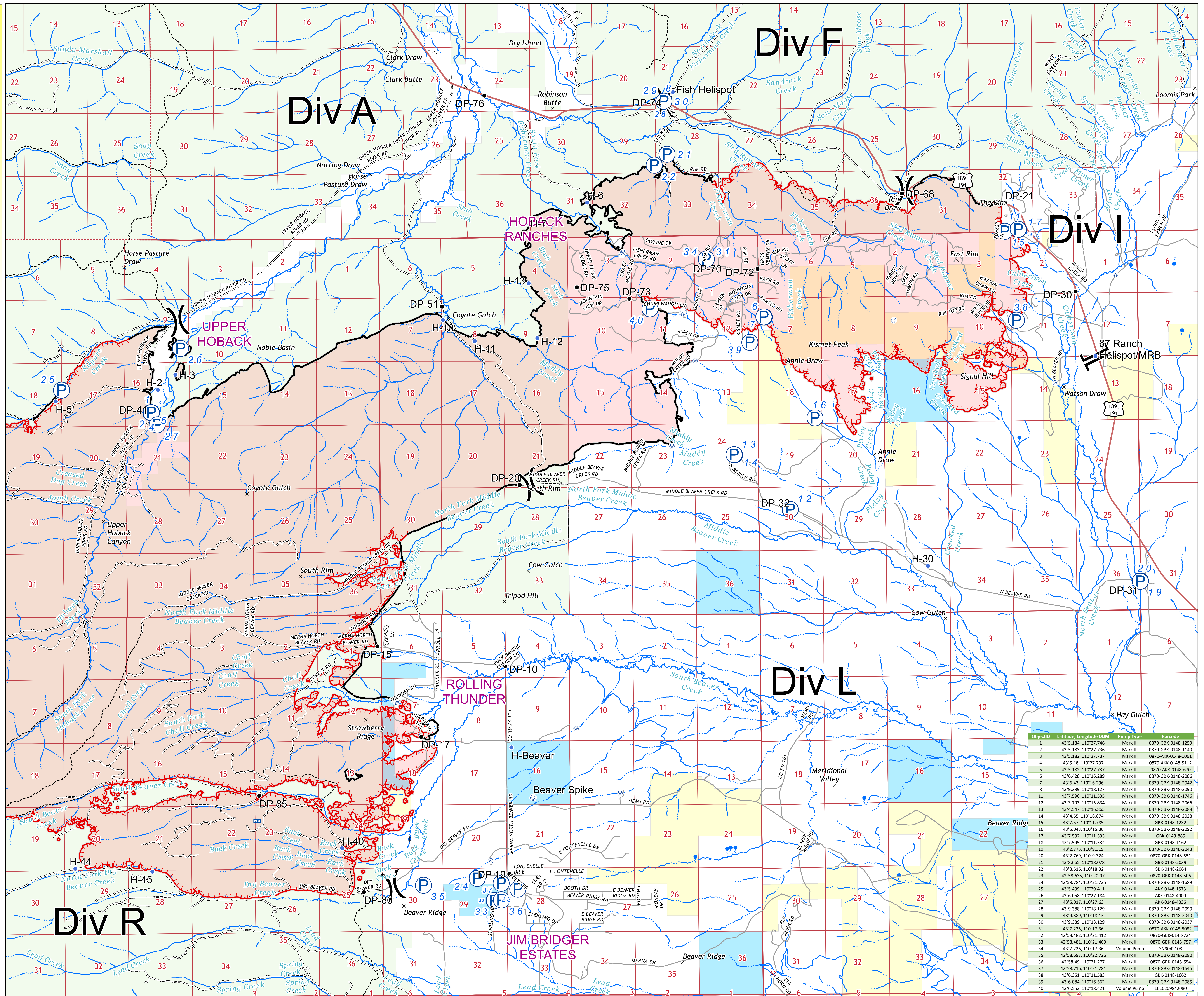


Roosevelt Fire
 WY-BTF-001823
Pumps
 September 29, 2018
 approximately 54,070 acres
 as of September 27 at 2029 hr



- P Pump Loc 20180929
- Camp
- + Dip Site
- Drop Point
- Helispot
- M Mobile Weather Unit
- R Repeater
- W Water Source
- W Water Tank
- W Restricted Water Source
- Division Break
- Branch Break
- Uncontrolled Fire Edge
- Completed Line
- Secondary Hwy
- Local Road
- 4WD
- Secondary Hwy
- Local Road
- 4WD
- Trail
- Section
- Forest Service
- Bureau of Land Management
- Private
- State



ObjectID	Latitude	Longitude	DDM	Pump Type	Barcode
1	43°5.184	110°27.746	Mark III	0870-GBK-0148-1259	
2	43°5.183	110°27.736	Mark III	0870-GBK-0148-1140	
3	43°5.182	110°27.737	Mark III	0870-GBK-0148-1061	
4	43°5.18	110°27.737	Mark III	0870-GBK-0148-5112	
5	43°5.182	110°27.737	Mark III	0870-GBK-0148-570	
6	43°5.428	110°16.389	Mark III	0870-GBK-0148-2086	
7	43°6.43	110°16.296	Mark III	0870-GBK-0148-2042	
8	43°9.389	110°18.127	Mark III	0870-GBK-0148-2090	
11	43°7.596	110°11.535	Mark III	0870-GBK-0148-1746	
12	43°3.793	110°15.834	Mark III	0870-GBK-0148-2066	
13	43°4.547	110°16.865	Mark III	0870-GBK-0148-2088	
14	43°4.51	110°16.874	Mark III	0870-GBK-0148-2028	
15	43°7.57	110°11.785	Mark III	GBK-0148-1232	
16	43°5.043	110°15.36	Mark III	0870-GBK-0148-2092	
17	43°7.592	110°11.533	Mark III	GBK-0148-885	
18	43°7.595	110°11.534	Mark III	GBK-0148-1162	
19	43°2.773	110°9.319	Mark III	0870-GBK-0148-2043	
20	43°2.769	110°9.324	Mark III	0870-GBK-0148-551	
21	43°6.665	110°18.078	Mark III	GBK-0148-2039	
22	43°8.516	110°18.32	Mark III	GBK-0148-2064	
23	42°58.635	110°20.97	Mark III	0870-GBK-0148-506	
24	42°58.784	110°21.725	Mark III	0870-GBK-0148-1689	
25	43°5.499	110°29.411	Mark III	AKK-0148-1573	
26	43°6.058	110°27.184	Mark III	AKK-0148-4000	
27	43°5.017	110°27.63	Mark III	AKK-0148-4036	
28	43°9.388	110°18.129	Mark III	0870-GBK-0148-2090	
29	43°9.389	110°18.13	Mark III	0870-GBK-0148-2040	
30	43°9.389	110°18.129	Mark III	0870-GBK-0148-2037	
31	43°7.225	110°17.36	Mark III	0870-GBK-0148-5082	
32	42°58.482	110°21.412	Mark III	0870-GBK-0148-724	
33	42°58.481	110°21.409	Mark III	0870-GBK-0148-757	
34	43°7.226	110°17.36	Volume Pump	SN0421208	
35	42°58.697	110°22.726	Mark III	0870-GBK-0148-2040	
36	42°58.49	110°21.277	Mark III	0870-GBK-0148-654	
37	42°58.716	110°21.281	Mark III	0870-GBK-0148-1646	
38	43°6.351	110°11.583	Mark III	GBK-0148-1662	
39	43°6.084	110°16.562	Mark III	0870-GBK-0148-2085	
40	43°6.512	110°18.421	Volume Pump	161020842080	

Great Basin Team 2 GIS
 Author: jkldmrc
 Date: 20180929 1:53 hr
 File: Pumps3_36x48_land_2018_Roosevelt_WYBTF001823_V106.mxd

0 0.5 1 Miles

Projection: NAD83 UTM Zone12