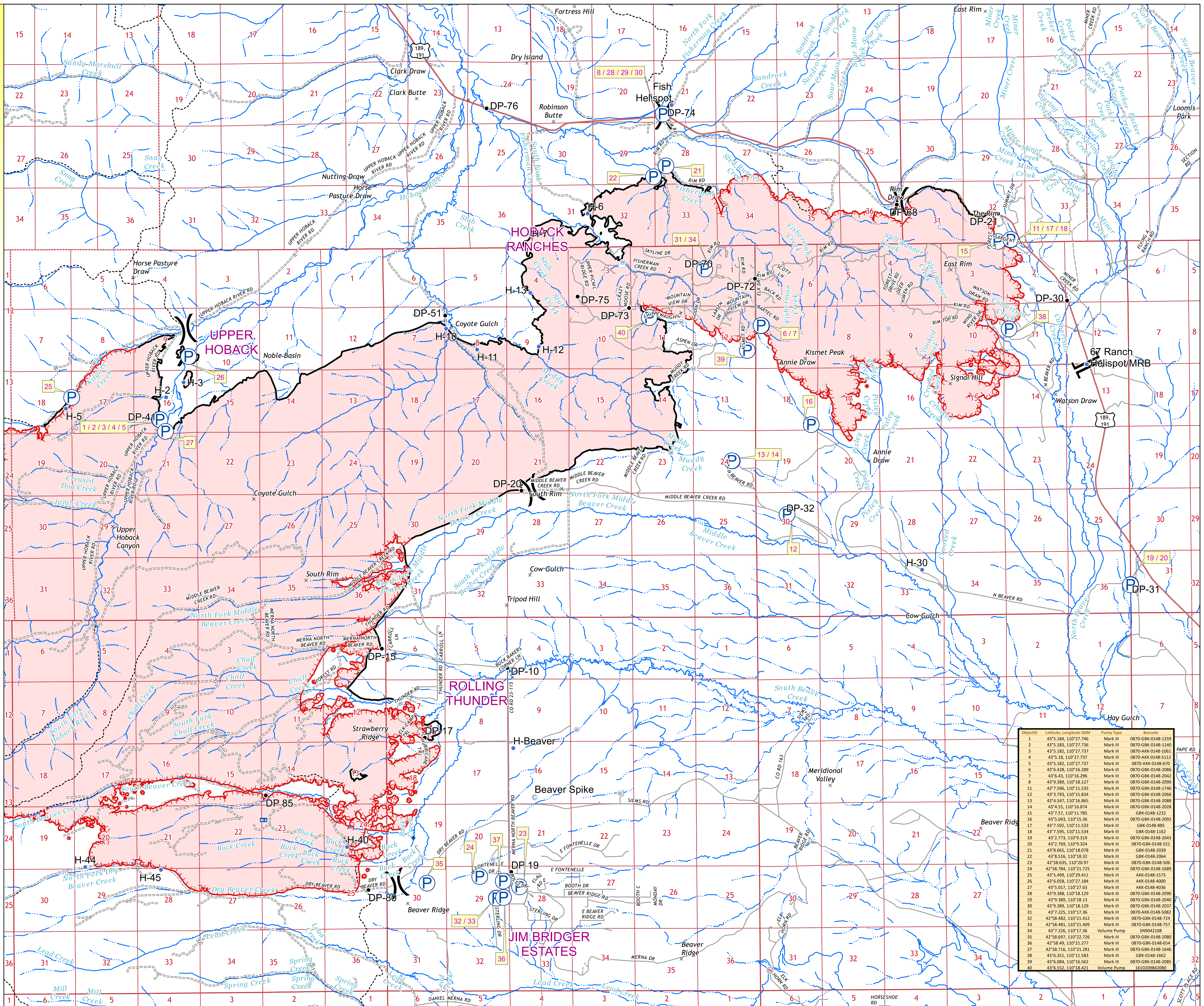


Pumps
 Roosevelt
 WY-BTF-001823
 9/29/2018
 57,969
 Acres



- P Pumps
- + Camp
- Dip Site
- Drop Point
- Helispot
- M Mobile Weather Unit
- R Repeater
- W Water Source
- T Water Tank
- R Restricted Water Source
- () Division Break
- [] Branch Break
- Uncontrolled Fire Edge
- Completed Line
- Secondary Hwy
- Local Road
- 4WD
- Secondary Hwy
- Local Road
- 4WD
- Trail
- Section



ObjectID	Latitude	Longitude	DDM	Pump Type	Barcode
1	43°5'184	110°27'746	Mark III	0870-GBK-0148-1259	
2	43°5'183	110°27'736	Mark III	0870-GBK-0148-1140	
3	43°5'182	110°27'737	Mark III	0870-AKK-0148-1061	
4	43°5'18	110°27'737	Mark III	0870-AKK-0148-5112	
5	43°5'182	110°27'737	Mark III	0870-AKK-0148-670	
6	43°6'428	110°16'289	Mark III	0870-GBK-0148-2086	
7	43°6'43	110°16'296	Mark III	0870-GBK-0148-2042	
8	43°9'389	110°18'127	Mark III	0870-GBK-0148-2090	
11	43°7'596	110°15'834	Mark III	0870-GBK-0148-1746	
12	43°7'593	110°15'834	Mark III	0870-GBK-0148-2066	
13	43°4'547	110°16'865	Mark III	0870-GBK-0148-2088	
14	43°4'55	110°16'874	Mark III	0870-GBK-0148-2028	
15	43°7'571	110°17'785	Mark III	GBK-0148-1232	
16	43°5'043	110°15'36	Mark III	0870-GBK-0148-2092	
17	43°7'592	110°15'533	Mark III	GBK-0148-885	
18	43°7'595	110°15'534	Mark III	GBK-0148-1162	
19	43°7'775	110°9'319	Mark III	0870-GBK-0148-2043	
20	43°2'769	110°9'324	Mark III	AKK-0148-1573	
21	43°8'665	110°18'078	Mark III	GBK-0148-2039	
22	43°8'516	110°18'32	Mark III	GBK-0148-2064	
23	42°58'635	110°20'97	Mark III	0870-GBK-0148-506	
24	42°58'784	110°21'725	Mark III	0870-GBK-0148-1689	
25	43°5'499	110°29'411	Mark III	AKK-0148-1573	
26	43°6'058	110°27'184	Mark III	AKK-0148-4000	
27	43°5'017	110°27'63	Mark III	AKK-0148-4036	
28	43°9'388	110°18'129	Mark III	0870-GBK-0148-2090	
29	43°9'389	110°18'13	Mark III	0870-GBK-0148-2040	
30	43°9'389	110°18'129	Mark III	0870-GBK-0148-2037	
31	43°7'225	110°17'36	Mark III	0870-AKK-0148-5082	
32	42°58'482	110°21'412	Mark III	0870-GBK-0148-724	
33	42°58'481	110°21'409	Mark III	0870-GBK-0148-757	
34	43°7'226	110°17'36	Volume Pump	SN942108	
35	42°58'697	110°21'726	Mark III	0870-GBK-0148-2080	
36	42°58'49	110°21'277	Mark III	0870-GBK-0148-654	
37	42°58'716	110°21'281	Mark III	0870-GBK-0148-1646	
38	43°6'351	110°15'883	Mark III	GBK-0148-1662	
39	43°6'084	110°16'562	Mark III	0870-GBK-0148-2085	
40	43°6'552	110°18'421	Volume Pump	1610209842080	