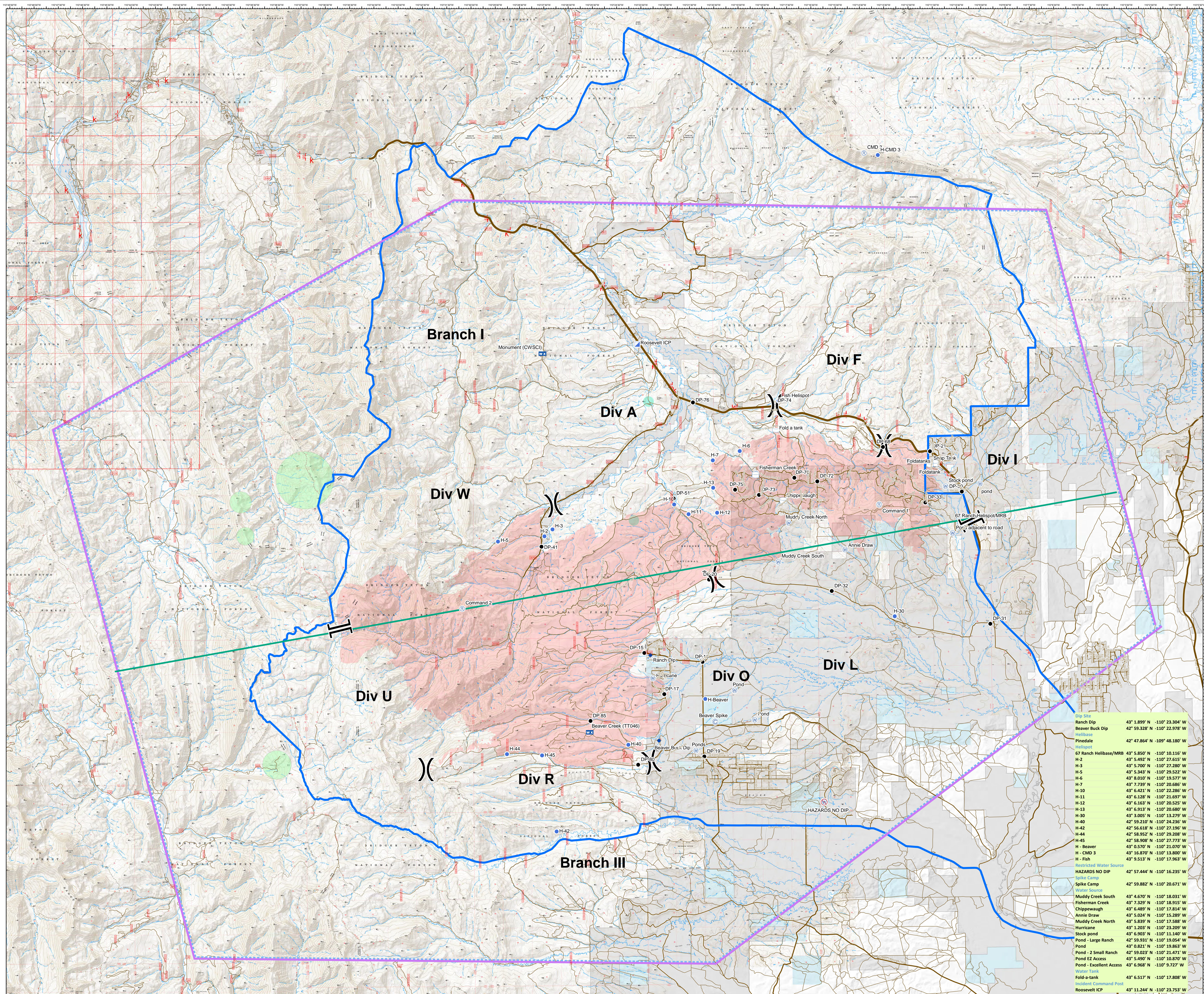


Air Operations
 Roosevelt
 WY-BTF-001823
 09/30/2018
 60,934
 Acres



Legend

- Camp
 - Dip Site
 - Drop Point
 - Helispot
 - Incident Command Post
 - Mobile Weather Unit
 - Repeater
 - Water Source
 - Water Tank
 - Restricted Water Source
 - Division Break
 - Branch Break
 - Branch Split Line
 - Temporary Flight Restriction
 - IA Area
 - Botany/ESA Avoidance
 - Heavy Equipment Avoidance Area
 - Heavy Equipment and Retardant Avoidance Area
- Land Ownership**
- Private Land
 - Forest Service (Transparent)
 - Bureau of Land Management
 - State
 - Water



| | | | |
|-------------------------|---------------|-----------------|--|
| Dip Site | | | |
| Ranch Dip | 43° 1.899' N | -110° 23.304' W | |
| Beaver Buck Dip | 42° 59.328' N | -110° 22.978' W | |
| Helibase | | | |
| Pinedale | 42° 47.864' N | -109° 48.180' W | |
| Helispot | | | |
| 67 Ranch Helibase/MRB | 43° 5.850' N | -110° 10.116' W | |
| H-2 | 43° 5.492' N | -110° 27.615' W | |
| H-3 | 43° 5.700' N | -110° 27.280' W | |
| H-5 | 43° 5.343' N | -110° 29.522' W | |
| H-6 | 43° 8.010' N | -110° 19.577' W | |
| H-7 | 43° 7.739' N | -110° 20.686' W | |
| H-10 | 43° 6.421' N | -110° 22.286' W | |
| H-11 | 43° 6.128' N | -110° 21.697' W | |
| H-12 | 43° 6.163' N | -110° 20.525' W | |
| H-13 | 43° 6.913' N | -110° 20.680' W | |
| H-30 | 43° 3.005' N | -110° 13.279' W | |
| H-40 | 42° 59.210' N | -110° 24.236' W | |
| H-42 | 42° 56.618' N | -110° 27.196' W | |
| H-44 | 42° 58.952' N | -110° 29.208' W | |
| H-45 | 42° 58.908' N | -110° 27.773' W | |
| H - Beaver | 43° 0.570' N | -110° 21.070' W | |
| H - CMD 3 | 43° 16.870' N | -110° 15.860' W | |
| H - Fish | 43° 9.513' N | -110° 17.963' W | |
| Restricted Water Source | | | |
| HAZARDS NO DIP | 42° 57.444' N | -110° 16.235' W | |
| Spike Camp | | | |
| Spike Camp | 42° 59.882' N | -110° 20.671' W | |
| Water Source | | | |
| Muddy Creek South | 43° 4.670' N | -110° 18.031' W | |
| Fisherman Creek | 43° 7.329' N | -110° 18.915' W | |
| Chippewaugh | 43° 6.489' N | -110° 17.814' W | |
| Annie Draw | 43° 5.024' N | -110° 15.280' W | |
| Muddy Creek North | 43° 5.839' N | -110° 17.588' W | |
| Hurricane | 43° 1.203' N | -110° 23.209' W | |
| Stock pond | 43° 6.903' N | -110° 11.140' W | |
| Pond - Large Ranch | 42° 59.931' N | -110° 19.054' W | |
| Pond | 43° 0.821' N | -110° 19.860' W | |
| Pond - 2 Small Ranch | 42° 59.023' N | -110° 21.471' W | |
| Pond EZ Access | 43° 5.490' N | -110° 10.870' W | |
| Pond - Excellent Access | 43° 6.968' N | -110° 9.727' W | |
| Water Tank | | | |
| Fold-a-tank | 43° 6.517' N | -110° 17.808' W | |
| Incident Command Post | | | |
| Roosevelt ICP | 43° 11.244' N | -110° 23.753' W | |

Datum: NAD 1983 UTM Zone 12N
 Created by: rpanunto
 Created Date: 9/30/2018