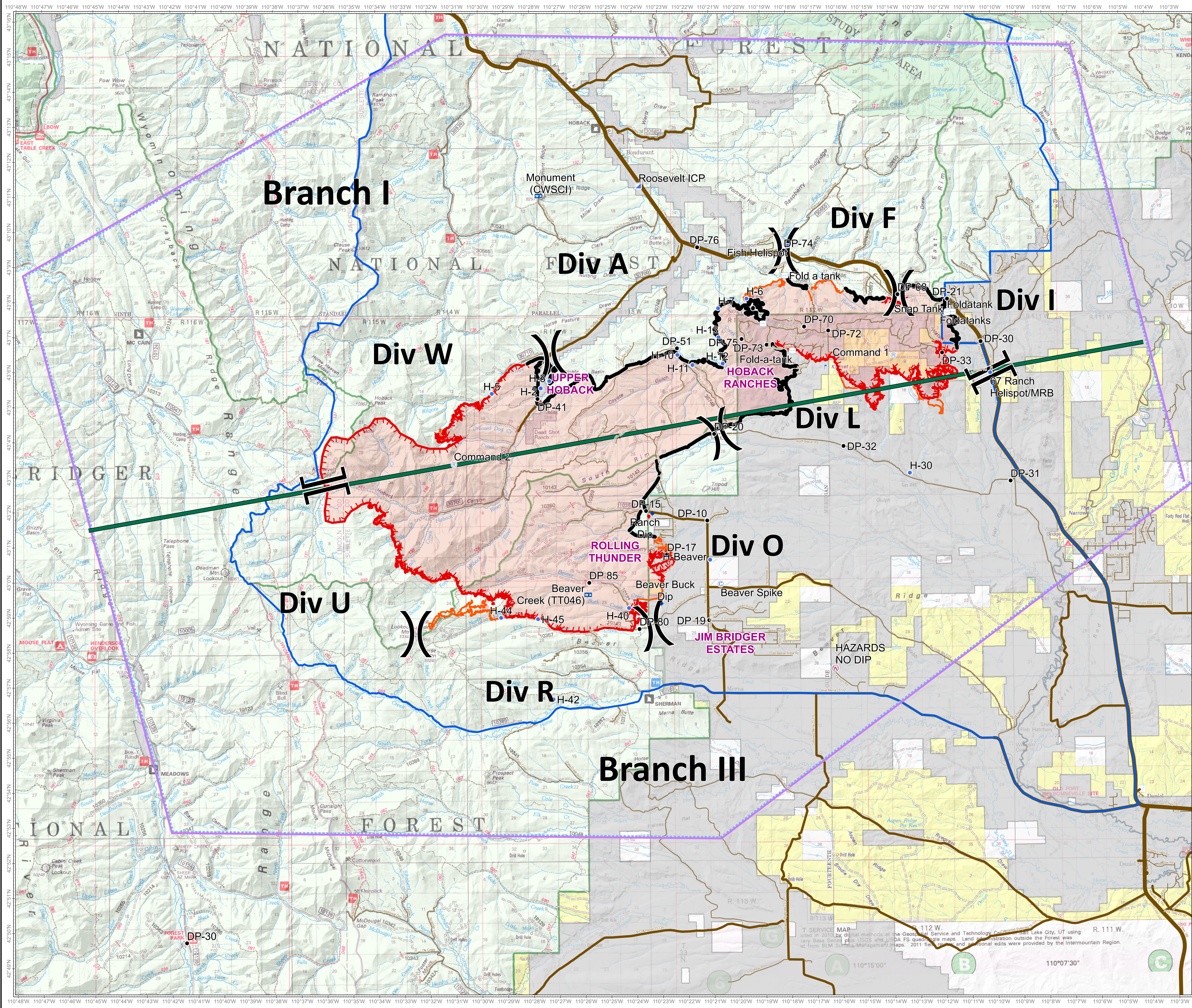


Roosevelt Fire
 WY-BTF-001823
Briefing
 September 30, 2018

approximately 60,762 acres
 on September 29, @ 2136 hrs



- 0929 IR Perimeter
- Branch Break
-) Division Break
- Incident Command Post
- ⊕ Helispot
- Drop Point
- ⬇ Dip
- R Repeater
- Value at Risk
- Completed
- Uncontrolled Fire Edge
- Private
- US Highway
- WY Highway
- County
- Local
- USFS
- Trail
- Temporary Flight Restriction
- IA Area



Great Basin Team 6 GIS
 Author: jskidmore
 Date: 20180930 0520hr
 File: BAW_20180930_2018_Roosevelt_WYBTF001823_V106.mxd
 Projection: NAD83 UTM Zone12
 Lat-Long Grid Ticks: 1 minute interval
 0 0.5 1 2 3 4 Miles