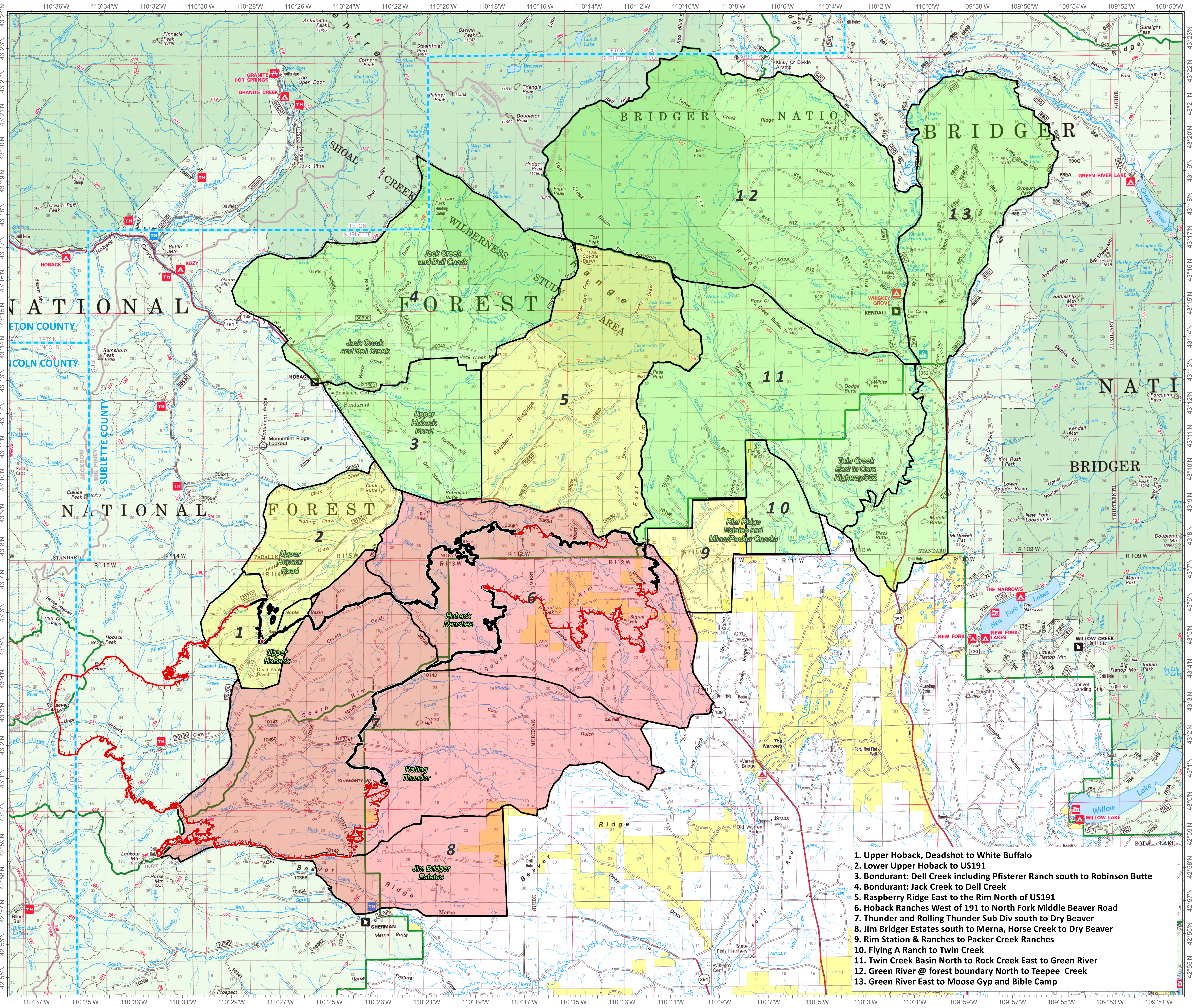


Evacuation

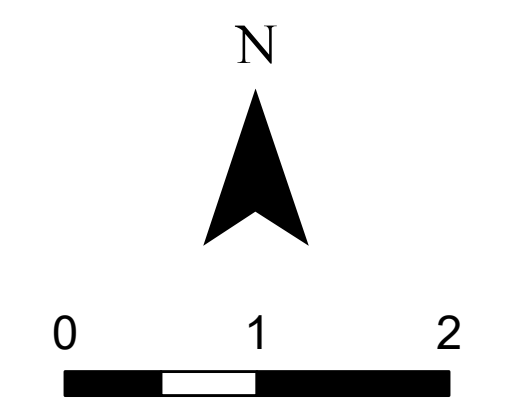
Roosevelt
 WY-BTF-001823
 09/30/2018
 60,934
 Acres



- Uncontrolled Fire Edge
- Completed Line
- County Boundary
- Forest Ranger District Boundary
- Evacuation Areas**
- Status**
- Ready
- Set
- Go (Evacuated)



1. Upper Hoback, Deadshot to White Buffalo
2. Lower Upper Hoback to US191
3. Bondurant: Dell Creek including Pfisterer Ranch south to Robinson Butte
4. Bondurant: Jack Creek to Dell Creek
5. Raspberry Ridge East to the Rim North of US191
6. Hoback Ranches West of 191 to North Fork Middle Beaver Road
7. Thunder and Rolling Thunder Sub Div south to Dry Beaver
8. Jim Bridger Estates south to Merna, Horse Creek to Dry Beaver
9. Rim Station & Ranches to Packer Creek Ranches
10. Flying A Ranch to Twin Creek
11. Twin Creek Basin North to Rock Creek East to Green River
12. Green River @ forest boundary North to Teepee Creek
13. Green River East to Moose Gyp and Bible Camp



Datum: NAD 1983 UTM Zone 12N
 Created by: jskdmr
 Created Date: 9/30/2018