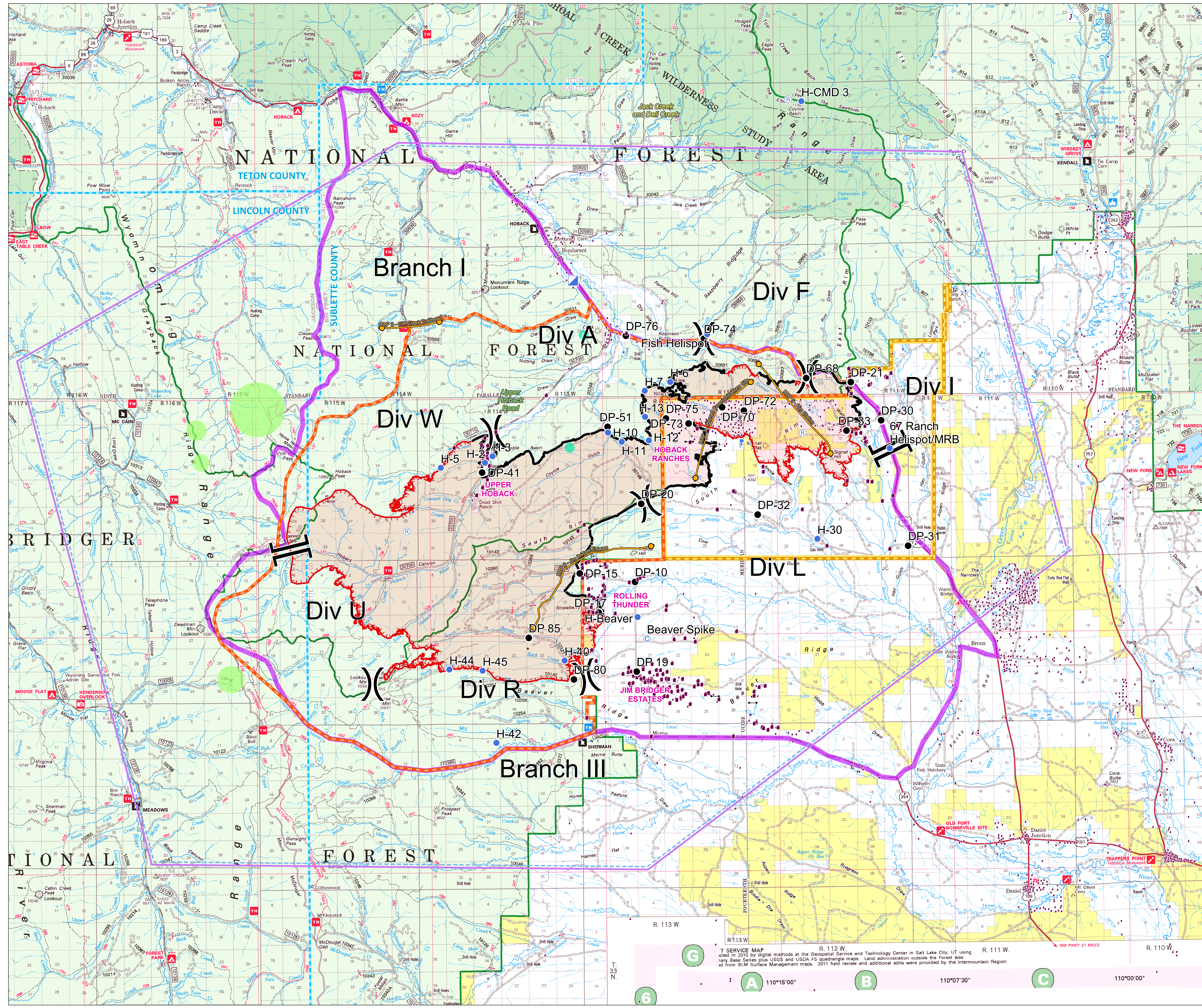


# Roosevelt Fire WY-BTF-001823 Planning September 30, 2018

approximately 60,934 acres  
as of 09/29 at 2136 hr



- Branch Break
- Division Break
- Drop Point
- Incident Command Post
- Camp
- Lookout
- Repeater
- Value at Risk
- Uncontrolled Fire Edge
- Completed Line
- Temporary Flight Restriction
- Planning Area as of September 2011
- Management Action Point (MAP)
- USFS Closure Area as of September 22
- BLM Closure Area as of September 20
- County Boundary
- Forest Ranger District Boundary
- Private Inholdings near USFS
- Sage Grouse Leaks
- Heavy Equipment and Retardant Avoidance Area
- T and E Plant - Payson's Bladderpod
- Heavy Equipment Avoidance Area

**MAP 2 – Cliff Creek Trailhead**  
**CONDITIONS:**  
 Fire approaches the cliff creek trailhead/end of the cliff creek road(30530 road)  
**ACTIONS:**  
 Consider a road/area closure for the cliff creek drainage  
**RESOURCES:**  
 Two type 6 engines  
 One Sec 2

**MAP 3 – Kismet Communications Site**  
**CONDITIONS:**  
 Fire threatens the communications site on Kismet Peak  
**ACTIONS:**  
 Consider implementing actions to protect the repeater infrastructure.  
**RESOURCES:**  
 This is an important interagency VAR, more specific info will be added

**MAP 5 – Rim Station**  
**CONDITIONS:**  
 Fire approaches Highway 189/191 north and west of Kismet communication site  
**ACTIONS:**  
 Recommend evacuation of Rim Station  
 Consider the need for closure of Highway 189/191  
**RESOURCES:**  
 (none specified)

**MAP 6 – Jim Bridger Estates**  
**CONDITIONS:**  
 Fire Reaches Rolling Thunder  
**ACTIONS:**  
 Recommend evacuation of Jim Bridger Estates  
**RESOURCES:**  
 (none specified)



T SERVICE MAP  
 2018  
 110°15'00" 110°07'30" 110°00'00"  
 6 A B C  
 0 0.5 1 2 3 4 Miles

Great Basin Team 2 GIS  
 Author: mpanunto  
 Date: 20180930 0632 10  
 File: Planning\_3648\_Land\_2018\_Roosevelt\_WYBTF001823.mxd  
 Lat-Long Grid Ticks: 1 minute Interval  
 Projection: NAD83 UTM Zone12