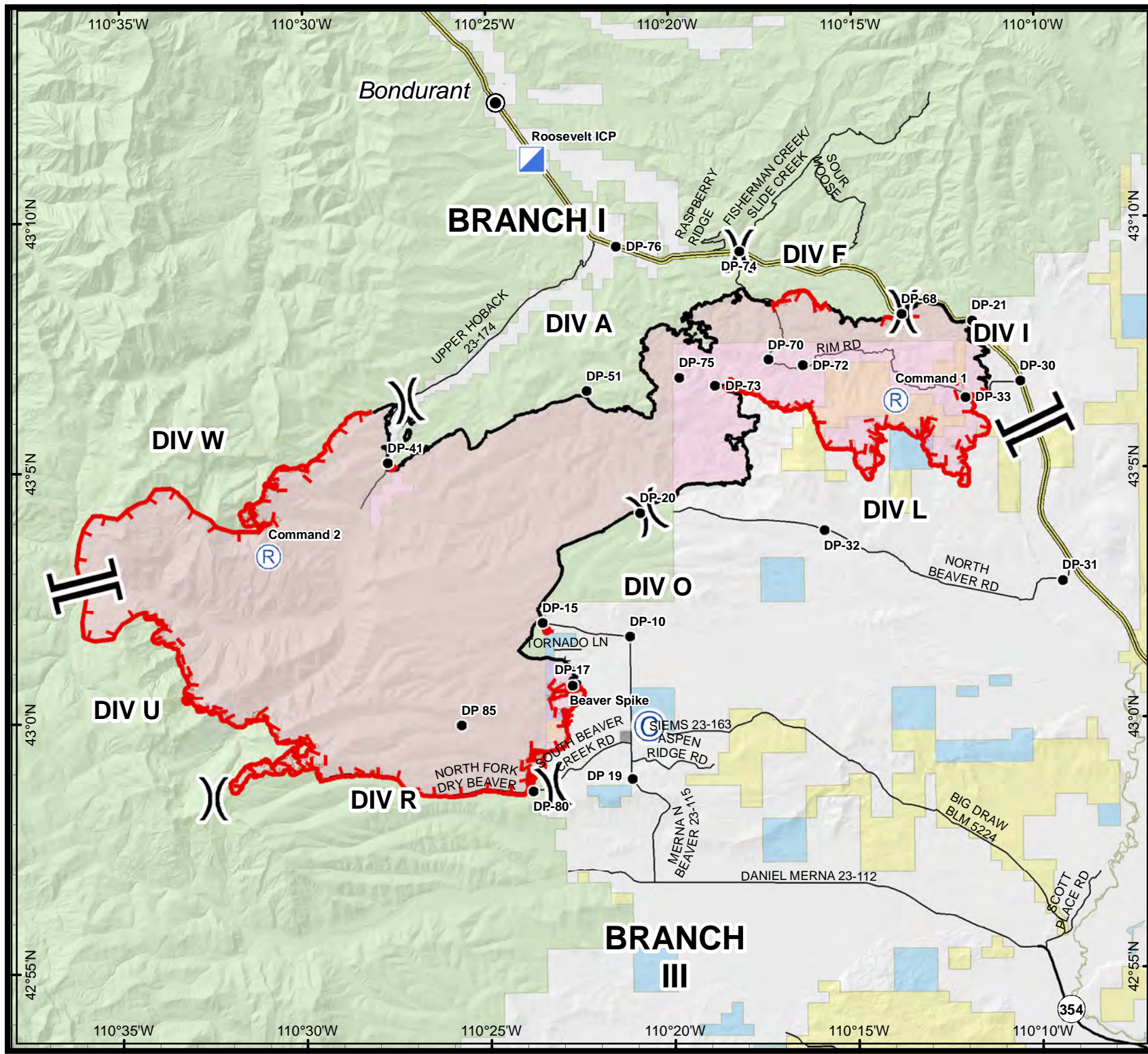


Roosevelt Fire

WY-BTF-001823

Transportation

Sept. 30, 2018
60,934 acres



- Camp
- Drop Point
- Incident Command Post
- Repeater
- Division Break
- Branch Break
- Uncontrolled Fire Edge
- Completed Line
- Wildfire Daily Fire Perimeter
- Forest Service
- Bureau of Land Management
- Private
- State



Great Basin Team 2 GIS
 author: mpanunto
 date: 20180930 0439 hr
 Projection: NAD83 UTM Zone 12 N
 Lat-Long Grid Ticks: 5' minute interval

 Miles 0 0.5 1 2 3