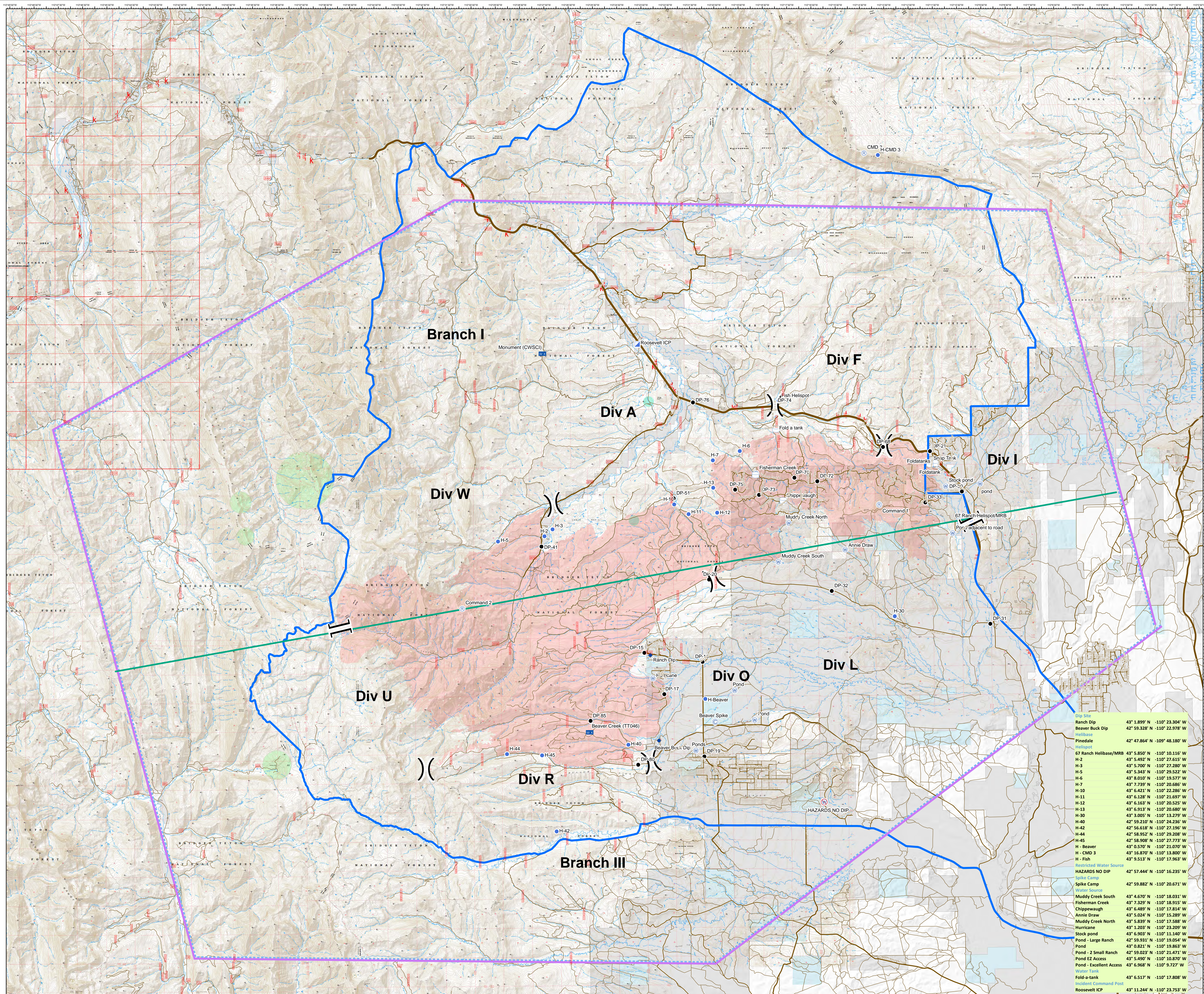


Air Operations
 Roosevelt
 WY-BTF-001823
 10/01/2018
 61,448
 Acres



Legend

- Camp
 - Dip Site
 - Drop Point
 - Helispot
 - Incident Command Post
 - Mobile Weather Unit
 - Repeater
 - Water Source
 - Water Tank
 - Restricted Water Source
 - Division Break
 - Branch Break
 - Branch Split Line
 - Temporary Flight Restriction
 - IA Area
 - BotanyTESAv01_091918
 - Heavy Equipment Avoidance Area
 - Heavy Equipment and Retardant Avoidance Area
- Land Ownership**
- Private Land
 - Forest Service (Transparent)
 - Bureau of Land Management
 - State
 - Water



Point Name	Coordinates
Ranch Dip	43° 1.899' N -110° 23.304' W
Beaver Buck Dip	42° 59.328' N -110° 22.978' W
Helibase	
Pinedale	42° 47.864' N -109° 48.180' W
Helispot	
67 Ranch Helibase/MRB	43° 5.850' N -110° 10.116' W
H-2	43° 5.492' N -110° 27.615' W
H-3	43° 5.700' N -110° 27.280' W
H-5	43° 5.343' N -110° 29.522' W
H-6	43° 8.010' N -110° 19.577' W
H-7	43° 7.739' N -110° 20.686' W
H-10	43° 6.421' N -110° 22.286' W
H-11	43° 6.128' N -110° 21.697' W
H-12	43° 6.163' N -110° 20.525' W
H-13	43° 6.913' N -110° 20.680' W
H-30	43° 3.005' N -110° 13.279' W
H-40	42° 59.210' N -110° 21.236' W
H-42	42° 56.618' N -110° 27.196' W
H-44	42° 58.952' N -110° 29.208' W
H-45	42° 58.908' N -110° 27.773' W
H - Beaver	43° 0.570' N -110° 21.070' W
H - CMD 3	43° 16.870' N -110° 13.800' W
H - Fish	43° 9.513' N -110° 17.963' W
Restricted Water Source	
HAZARDS NO DIP	42° 57.444' N -110° 16.235' W
Spike Camp	
Spike Camp	42° 59.882' N -110° 20.671' W
Water Source	
Muddy Creek South	43° 4.670' N -110° 18.031' W
Fisherman Creek	43° 7.329' N -110° 18.915' W
Chippewaugh	43° 6.489' N -110° 17.814' W
Annie Draw	43° 5.024' N -110° 15.280' W
Muddy Creek North	43° 5.839' N -110° 17.588' W
Hurricane	43° 1.203' N -110° 23.209' W
Stock pond	43° 6.903' N -110° 11.140' W
Pond - Large Ranch	42° 59.931' N -110° 19.054' W
Pond	43° 0.821' N -110° 19.860' W
Pond - 2 Small Ranch	42° 59.023' N -110° 21.471' W
Pond EZ Access	43° 5.490' N -110° 10.870' W
Pond - Excellent Access	43° 6.968' N -110° 9.727' W
Water Tank	
Fold-a-tank	43° 6.517' N -110° 17.808' W
Incident Command Post	
Roosevelt ICP	43° 11.244' N -110° 23.753' W

Datum: NAD 1983 UTM Zone 12N
 Created by: jskidmore
 Created Date: 10/1/2018