

Roosevelt

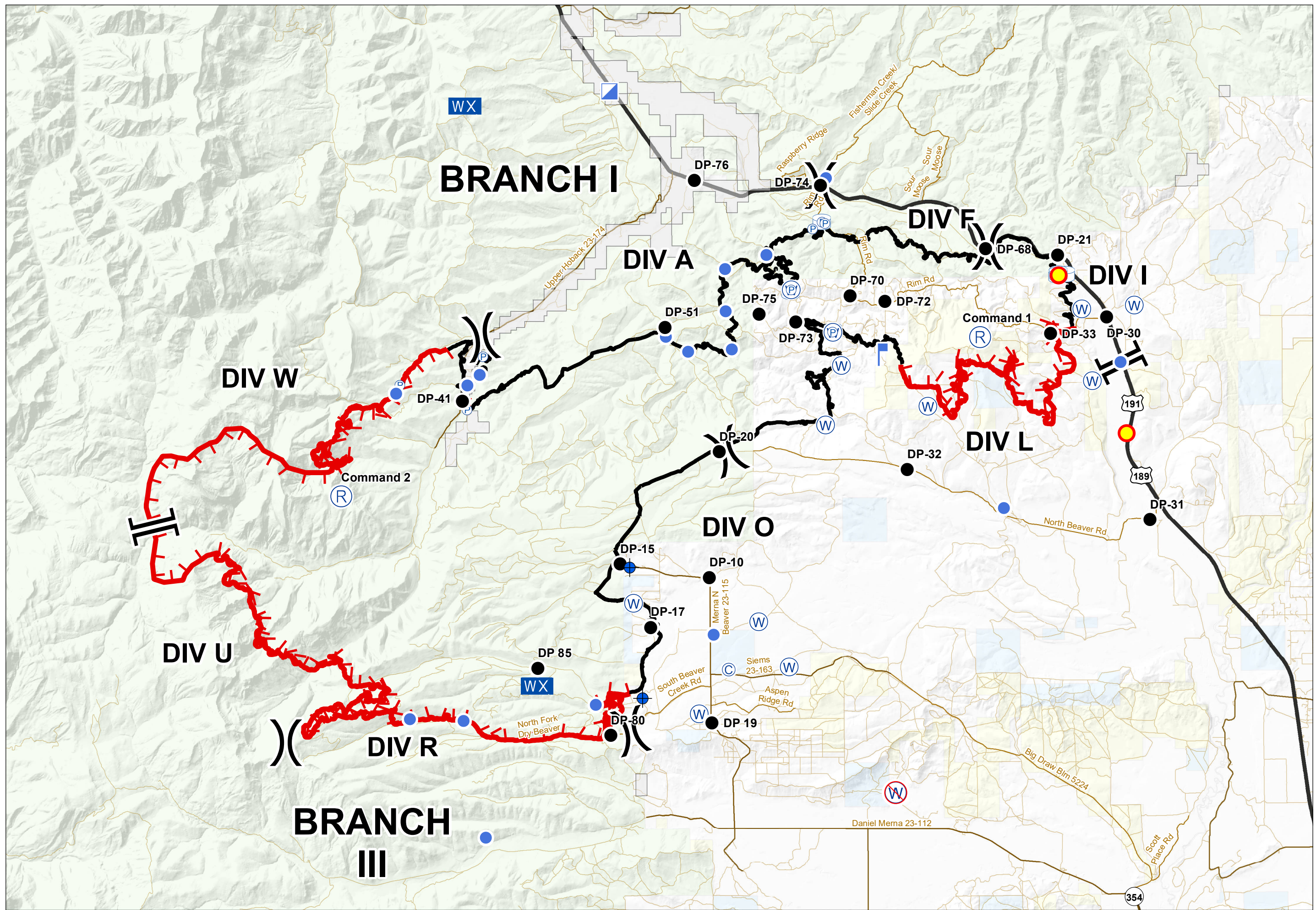
WY-BTF-001823

IAP Overview

10/01/2018

60,934 Acres

as of 9/29 2136



- Natural Gas Pumphouse
- Camp
- Dip Site
- Drop Point
- Helispot
- Incident Command Post
- Lookout
- Mobile Weather Unit
- Pump
- Repeater
- Water Source
- Water Tank
- Restricted Water Source
- Division Break
- Branch Break
- Completed Line
- Uncontrolled Fire Edge



Datum: NAD 1983 UTM Zone 12N
Created by: lkobelt
Created Date: 9/30/2018