

Planning

Roosevelt
WY-BT-001823
10/01/2018
61,448
Acres



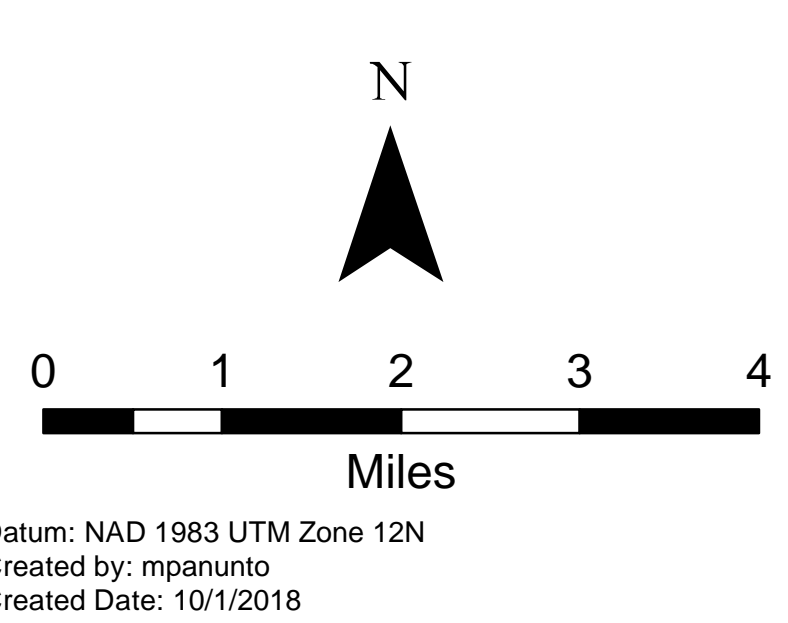
- Branch Break
- Division Break
- Drop Point
- Incident Command Post
- Camp
- Lookout
- Repeater
- Value at Risk
- Uncontrolled Fire Edge
- Completed Line
- Temporary Flight Restriction
- Planning Area as of September 201
- Management Action Point (MAP)
- USFS Closure Area as of September 22
- BLM Closure Area as of September 20
- County Boundary
- Forest Ranger District Boundary
- Private Inholdings near USFS
- Sage Grouse Leaks
- Heavy Equipment and Retardant Avoidance Area
- T and E Plant - Payson's Bladderpod
- Heavy Equipment Avoidance Area

MAP 2 - Cliff Creek Trailhead
CONDITIONS: Fire approaches the cliff creek trailhead/end of the cliff creek road(30530 road)
ACTIONS: Consider a road/area closure for the cliff creek drainage
RESOURCES: Two type 6 engines
One Sec 2

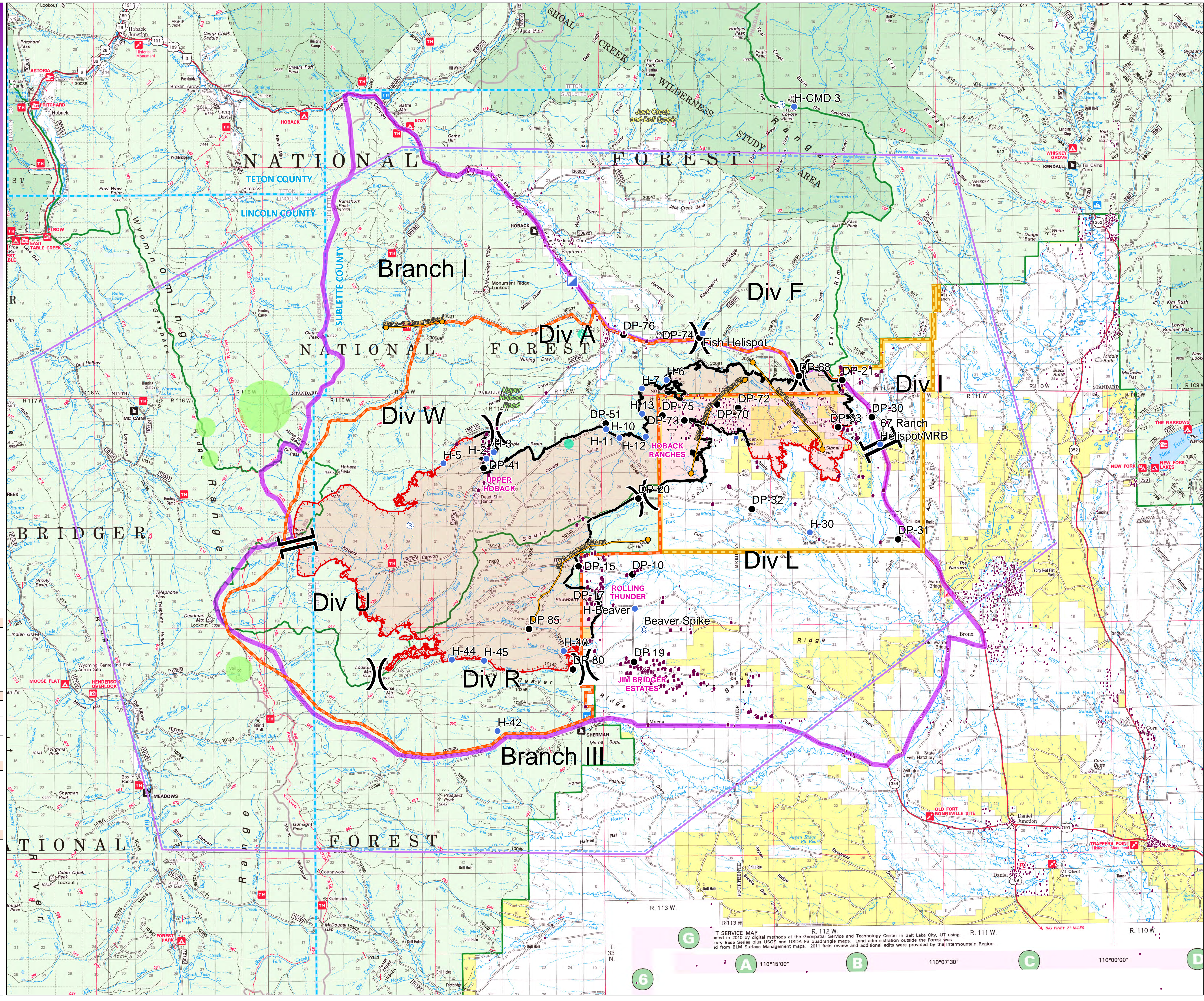
MAP 3 - Kismet Communications Site
CONDITIONS: Fire threatens the communications site on Kismet Peak
ACTIONS: Consider implementing actions to protect the repeater infrastructure.
RESOURCES: This is an important interagency VAR, more specific info will be added

MAP 5 - Rim Station
CONDITIONS: Fire approaches Highway 189/191 north and west of Kismet communication site
ACTIONS: Recommend evacuation of Rim Station
Consider the need for closure of Highway 189/191
RESOURCES: (none specified)

MAP 6 - Jim Bridger Estates
CONDITIONS: Fire Reaches Rolling Thunder
ACTIONS: Recommend evacuation of Jim Bridger Estates
RESOURCES: (none specified)



Datum: NAD 1983 UTM Zone 12N
Created by: mpanunto
Created Date: 10/1/2018



T SERVICE MAP
Created in 2010 by digital methods at the Geospatial Service and Technology Center in Salt Lake City, UT using
various Base Series plus USGS and USDA FS quadrangle maps. Land administration outside the Forest was
derived from BLM Surface Management maps. 2011 field review and additional edits were provided by the Intermountain Region.

6 A 110°15'00" B 110°07'30" C 110°00'00" D