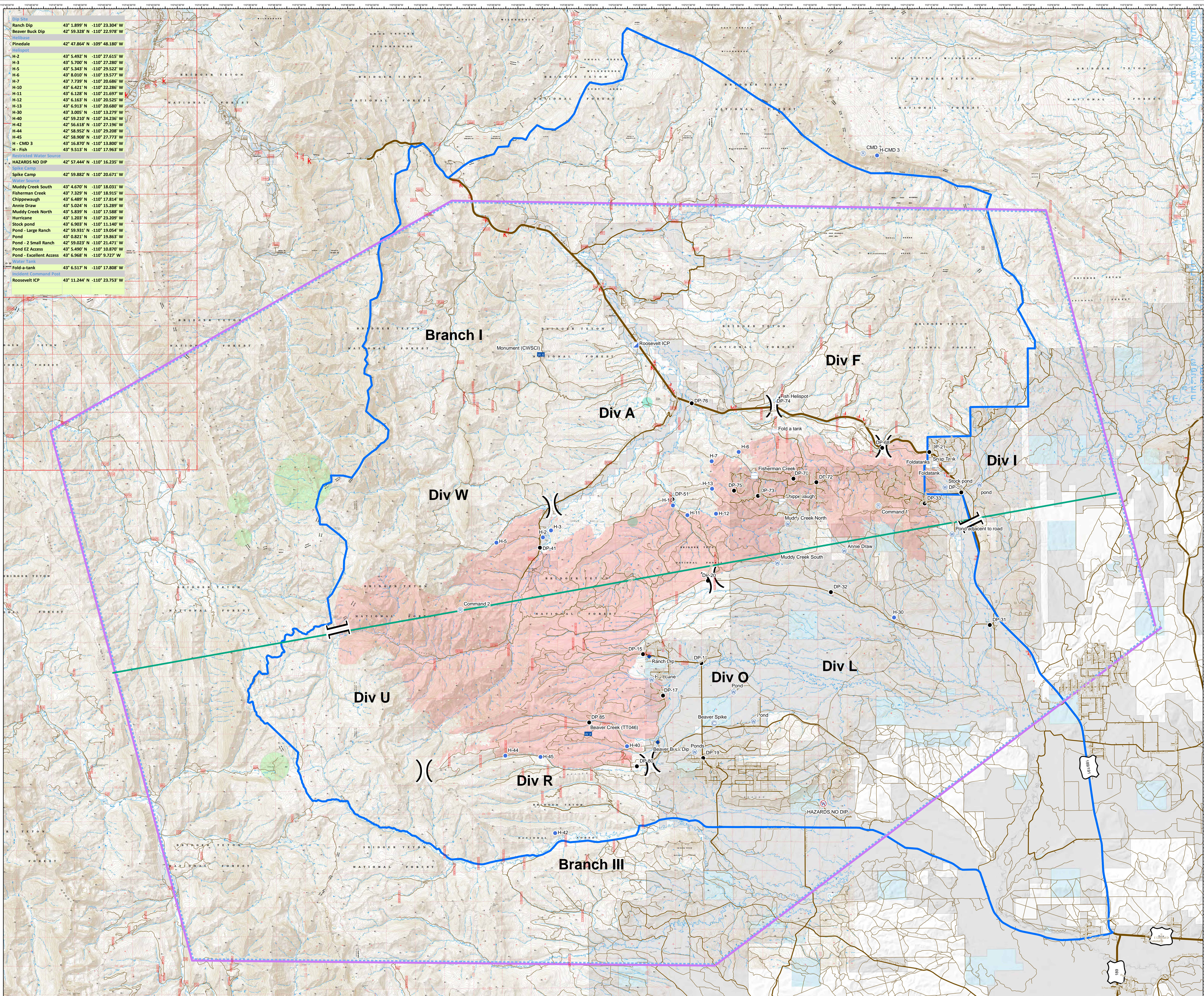


Air Operations

Roosevelt
WY-BTF-001823
10/02/2018
61,509
Acres



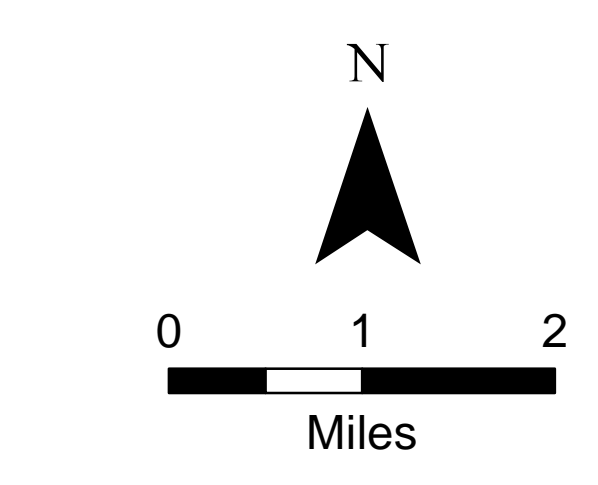
Point Name	Latitude	Longitude
Ranch Dip	43° 1.899' N	-110° 23.304' W
Beaver Buck Dip	42° 59.328' N	-110° 22.978' W
Helibase		
Pinedale	42° 47.864' N	-109° 48.180' W
H-2	43° 5.492' N	-110° 27.615' W
H-3	43° 5.700' N	-110° 27.280' W
H-5	43° 5.343' N	-110° 29.522' W
H-6	43° 8.010' N	-110° 19.577' W
H-7	43° 7.739' N	-110° 20.686' W
H-10	43° 6.421' N	-110° 22.285' W
H-11	43° 6.128' N	-110° 21.697' W
H-12	43° 6.163' N	-110° 20.525' W
H-13	43° 6.913' N	-110° 20.680' W
H-30	43° 3.005' N	-110° 13.279' W
H-40	42° 59.210' N	-110° 24.236' W
H-42	42° 56.618' N	-110° 27.196' W
H-44	42° 58.952' N	-110° 29.208' W
H-45	42° 58.908' N	-110° 27.773' W
H - CMD 3	43° 16.870' N	-110° 13.800' W
H - Fish	43° 5.513' N	-110° 17.963' W
Restricted Water Source		
HAZARDS NO DIP	42° 57.444' N	-110° 16.235' W
Spike Camp	42° 59.882' N	-110° 20.671' W
Muddy Creek South	43° 4.670' N	-110° 18.031' W
Fisherman Creek	43° 7.329' N	-110° 18.915' W
Chippewaugh	43° 6.489' N	-110° 17.814' W
Annie Draw	43° 5.024' N	-110° 15.289' W
Muddy Creek North	43° 5.929' N	-110° 17.588' W
Hurricane	43° 1.203' N	-110° 23.209' W
Stock pond	43° 6.903' N	-110° 11.140' W
Pond - Large Ranch	42° 59.931' N	-110° 19.054' W
Pond - 2 Small Ranch	43° 0.821' N	-110° 19.863' W
Pond E2 Access	42° 59.023' N	-110° 21.471' W
Pond - Excellent Access	43° 5.490' N	-110° 10.870' W
Water Tank		
Fold-a-tank	43° 6.517' N	-110° 17.808' W
Roosevelt ICP	43° 11.244' N	-110° 23.753' W

Legend

- Camp
- Dip Site
- Drop Point
- Helispot
- Incident Command Post
- Mobile Weather Unit
- Repeater
- Water Source
- Water Tank
- Restricted Water Source
- Division Break
- Branch Break
- Branch Split Line
- Temporary Flight Restriction
- IA Area
- BotanyTESAvold_091918
- Heavy Equipment Avoidance Area
- Heavy Equipment and Retardant Avoidance Area

Land Ownership

- | Name | Color |
|------------------------------|-------------|
| Private Land | Light Gray |
| Forest Service (Transparent) | Light Green |
| Bureau of Land Management | Light Blue |
| State | Light Blue |
| Water | Blue |



Datum: NAD 1983 UTM Zone 12N
Created by: jskidmore
Created Date: 10/2/2018