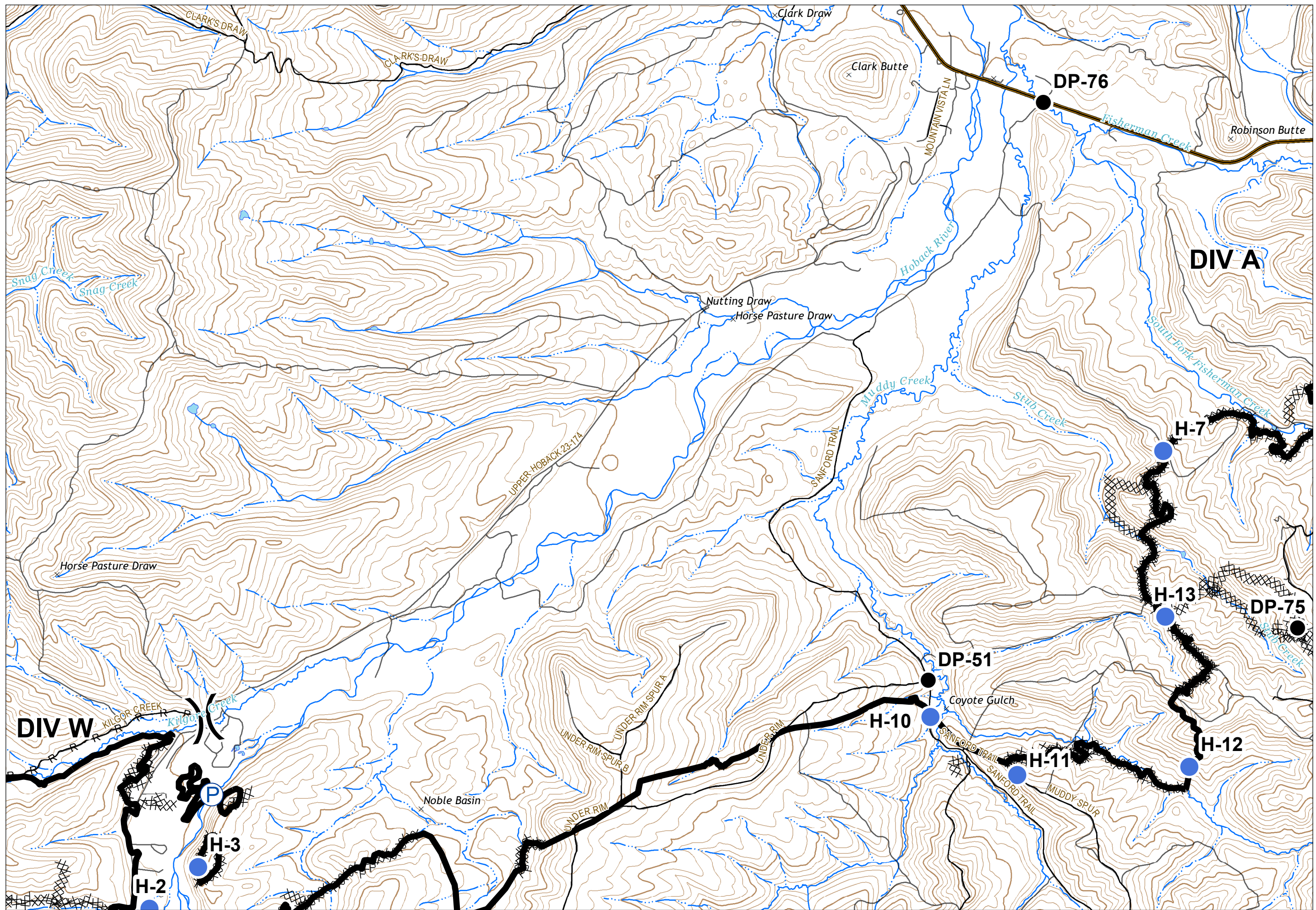


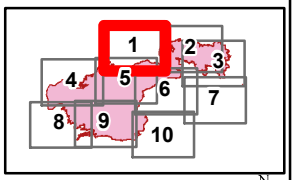
Roosevelt
WY-BTF-001823

IAP Tile 1
10/03/2018
61,511 Acres
as of 10/01 2048



- Drop Point
- Helispot
- P Pump
-) Division Break

- Completed Line
- XXXXX Completed Dozer Line
- H - H Completed Hand Line
- R - R Road as Completed Line



Datum: NAD 1983 UTM Zone 12N
Created by: lkobelt
Created Date: 10/2/2018