

# Operations

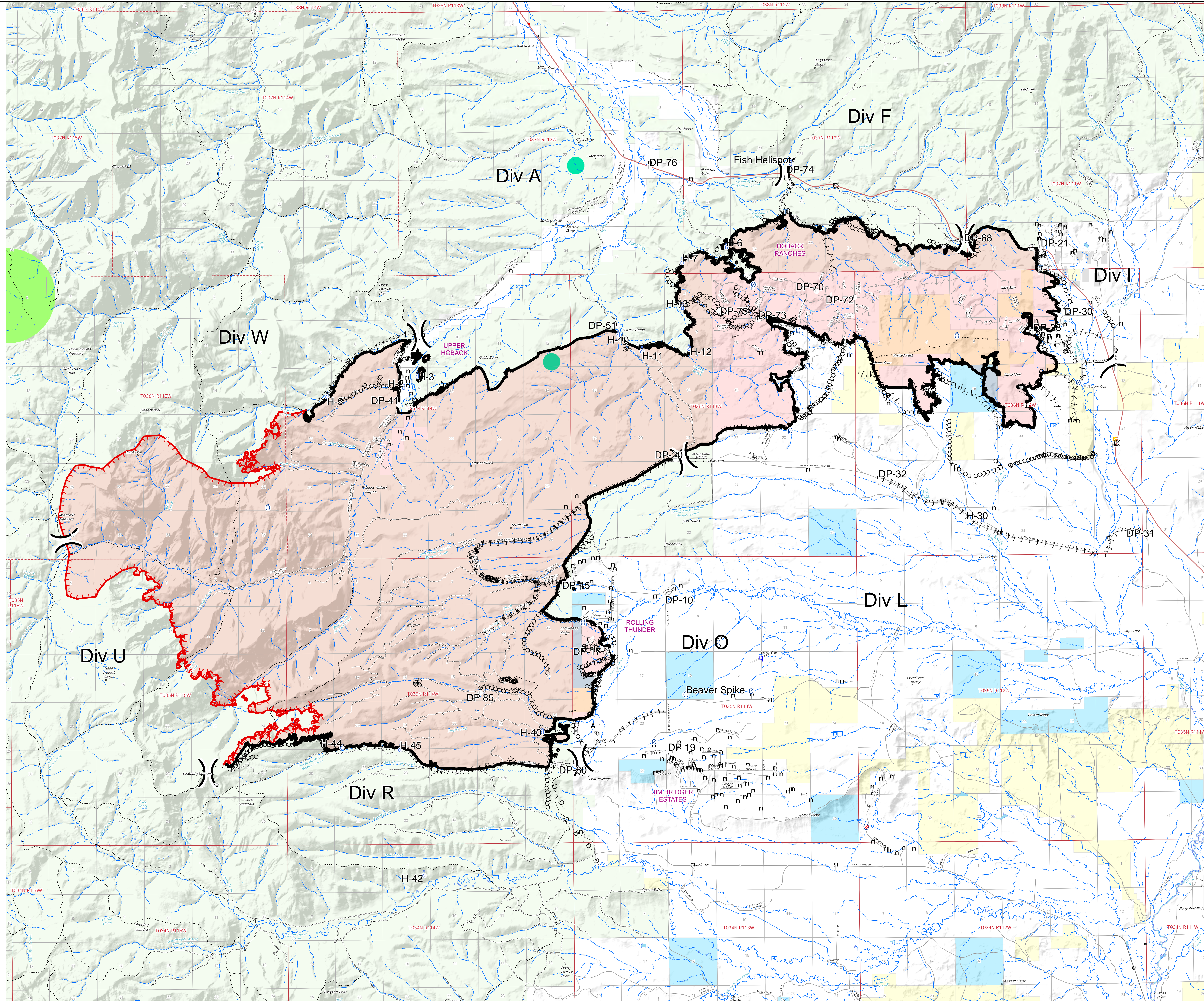
Roosevelt

WY-BTF-001823

10/03/2018

61,511

Acres



- Camp
- A Dip Site
- Drop Point
- Gate
- ⊙ Helispot
- ⊙ Incident Command Post
- h Lookout
- ⊙ Mobile Weather Unit
- ⊙ Repeater
- ⊙ Water Source
- T Water Tank
- ⊙ Restricted Water Source
- n Value at Risk
- ( ) Division Break
- Uncontrolled Fire Edge
- Completed Line
- - - - Completed Dozer Line
- ⋯ Completed Hand Line
- - - - Road as Completed Line
- ⋯ Line Break Completed
- - - - Proposed Dozer Line
- ⋯ Aerial Retardant Drop
- ⋯ Highlighted Manmade Feature
- Forest Service
- Bureau of Land Management
- Private
- State
- Heavy Equipment Avoidance
- Equipment and Retardant Avoidance