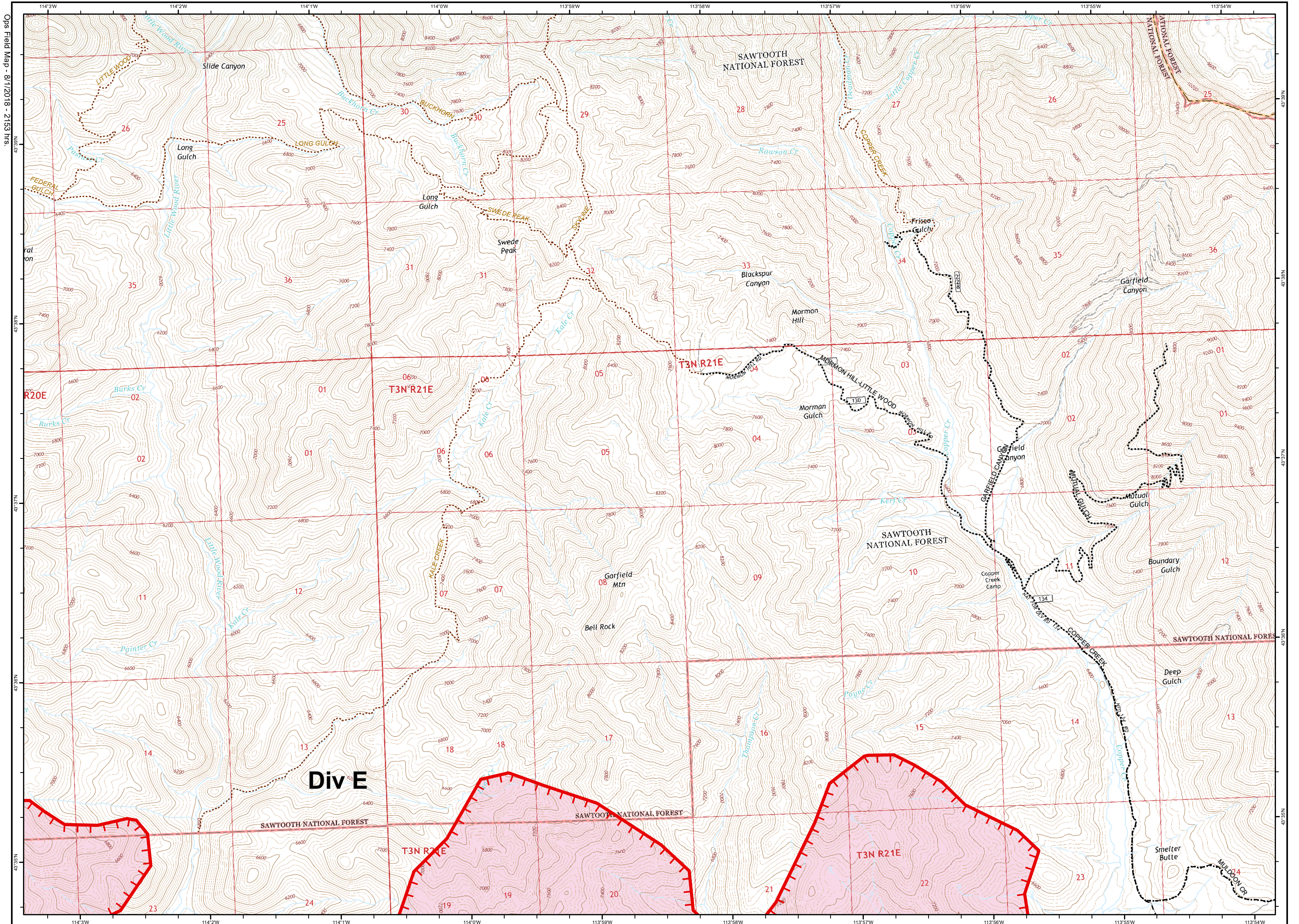


Sharps Fire - ID-EIS-000247 - Field Map
 August 2, 2018 - Day Shift
 Approx. 53,950 acres as of 8/1/18 1600 hrs

Page 1 of 8
 NAD 83 - UTM Zone 11
 SE - GB#1 - 8/1/2018 - 2153 hrs

- Uncontrolled Fire Edge
- Local Road
- USFS Road Core
- Suggested Travel Routes
- Wildfire Daily Fire Perimeter
- Seasonal Road
- USFS Trails



Ops Field Map - 8/1/2018 - 2153 hrs.

ation

NAD 83

R20E

NAD 83

NAD 83

NAD 83

NAD 83

NAD 83

NAD 83

NAD 83

NAD 83

43°38'N

43°38'N

43°37'N

43°37'N

43°36'N

43°36'N

43°35'N

43°35'N

43°35'N

43°35'N

43°35'N

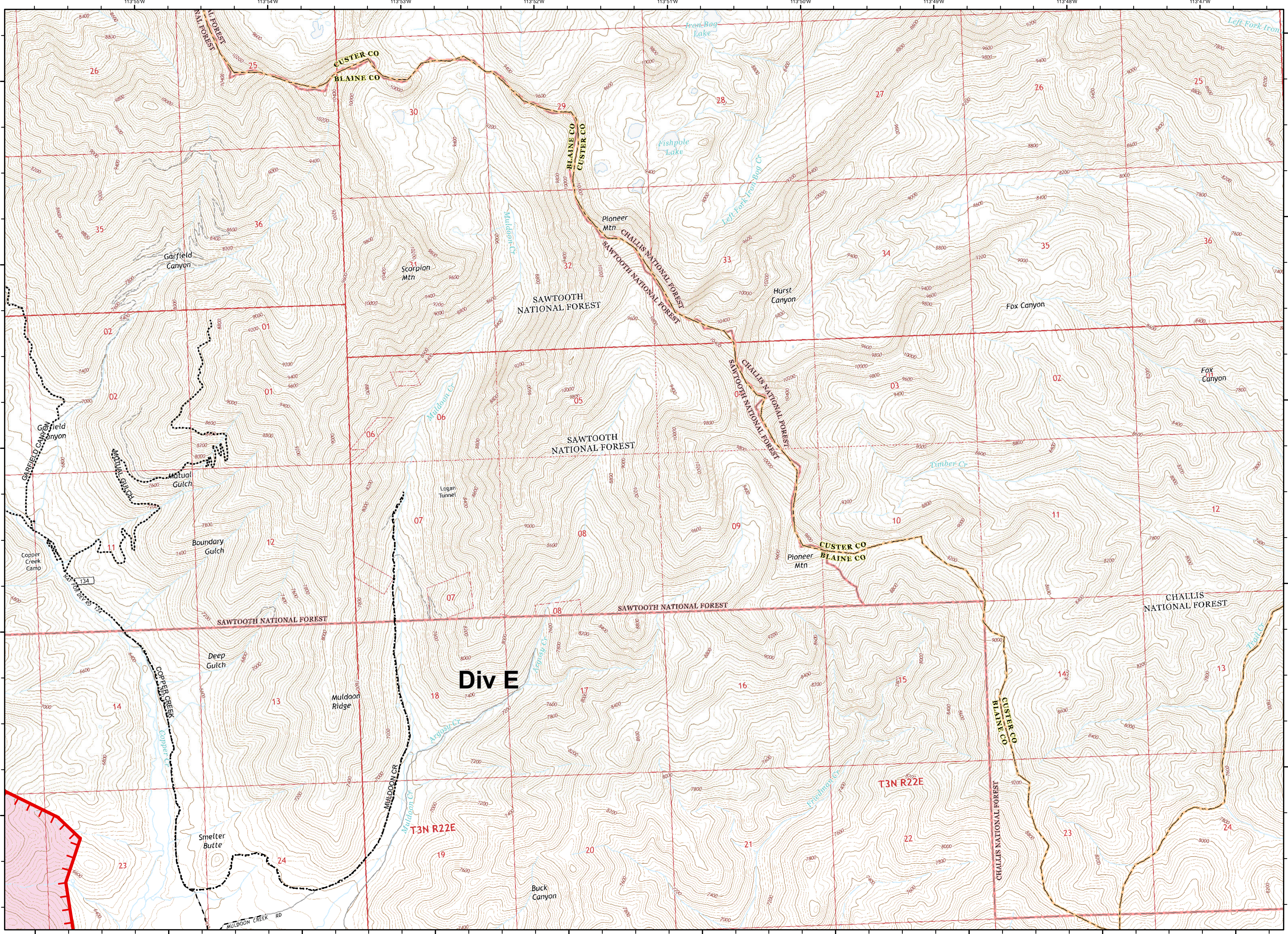
43°35'N



Sharps Fire - ID-EIS-000247 - Field Map
 August 2, 2018 - Day Shift
 Approx. 53,950 acres as of 8/1/18 1600 hrs

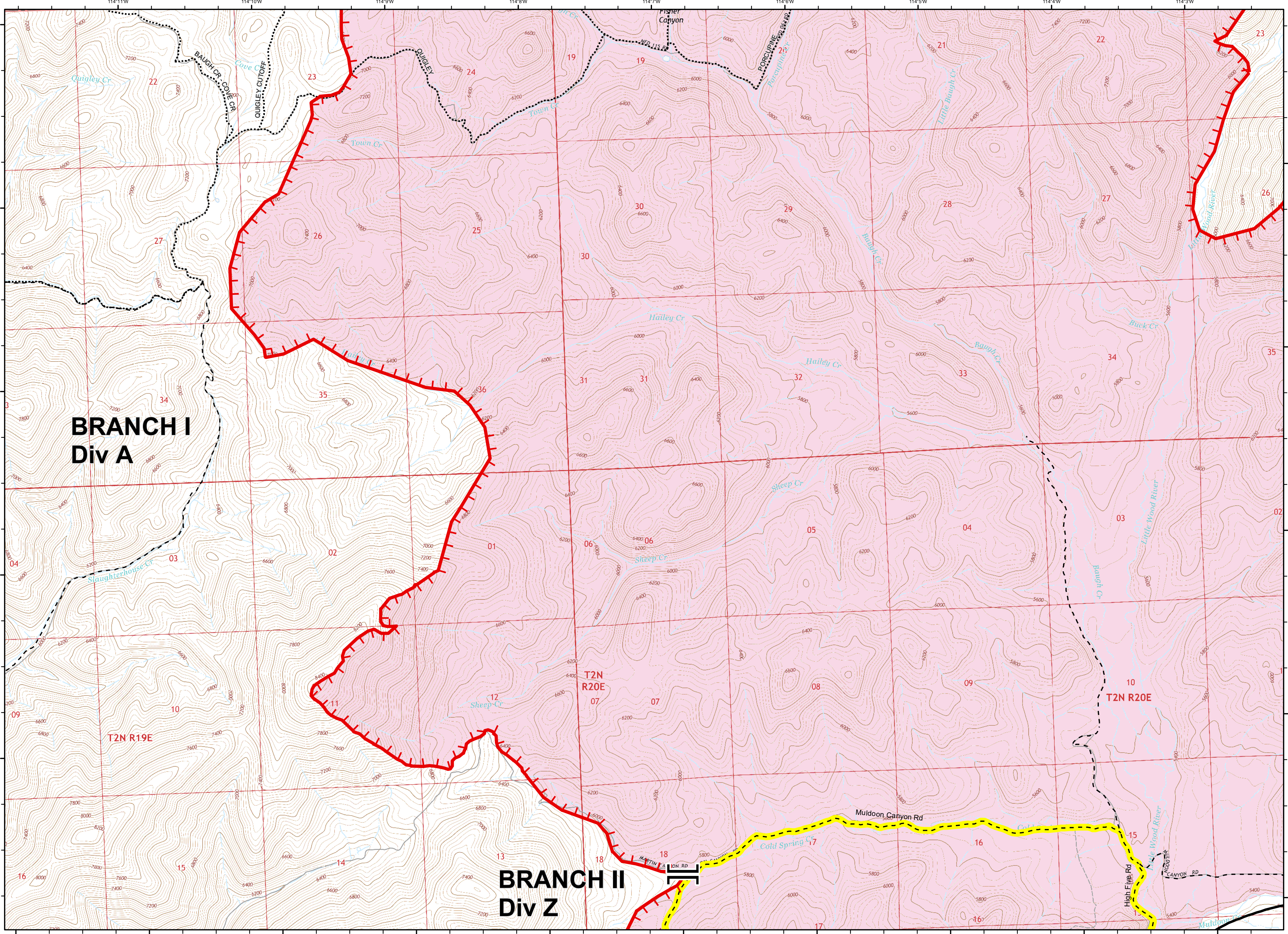
Page 2 of 8
 NAD 83 - UTM Zone 11
 SE - GB#1 - 8/1/2018 - 2153 hrs

- ▬ Uncontrolled Fire Edge
- ▬ Wildfire Daily Fire Perimeter
- Seasonal Road
- USFS Trails
- USFS Road Core



Sharps Fire - ID-EIS-000247 - Field Map
 August 2, 2018 - Day Shift
 Approx. 53,950 acres as of 8/1/18 1600 hrs

Uncontrolled Fire Edge Seasonal Road
 Wildfire Daily Fire Perimeter USFS Road Core



**BRANCH I
Div A**

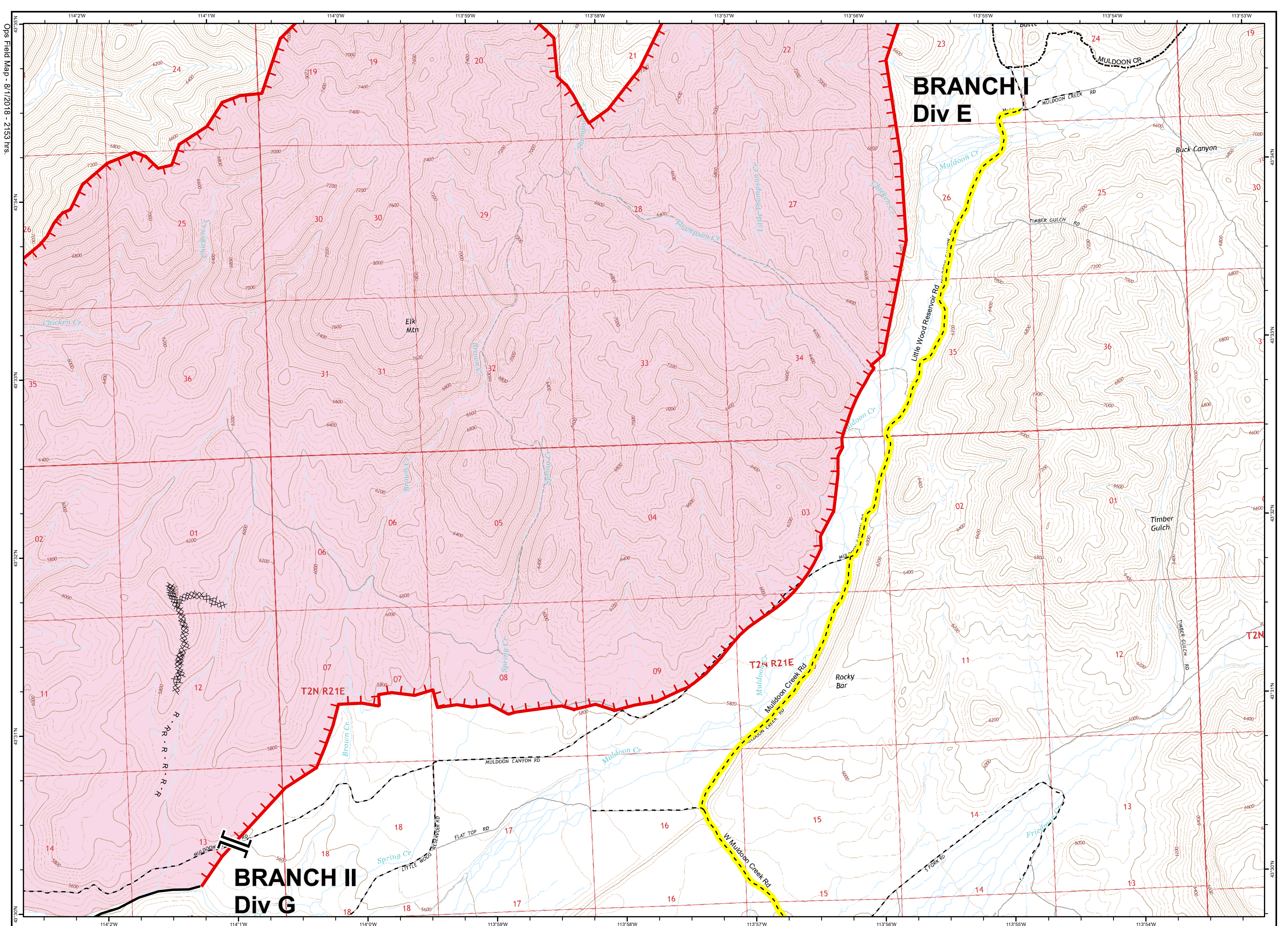
**BRANCH II
Div Z**



Sharps Fire - ID-EIS-000247 - Field Map
 August 2, 2018 - Day Shift
 Approx. 53,950 acres as of 8/1/18 1600 hrs

Page 4 of 8
 NAD 83 - UTM Zone 11
 SE - GB#1 - 8/1/2018 - 2153 hrs

- ┌ Uncontrolled Fire Edge
- Wildfire Daily Fire Perimeter
- USFS Road Core
- Completed Line
- Seasonal Road
- Suggested Travel Routes



**BRANCH I
Div E**

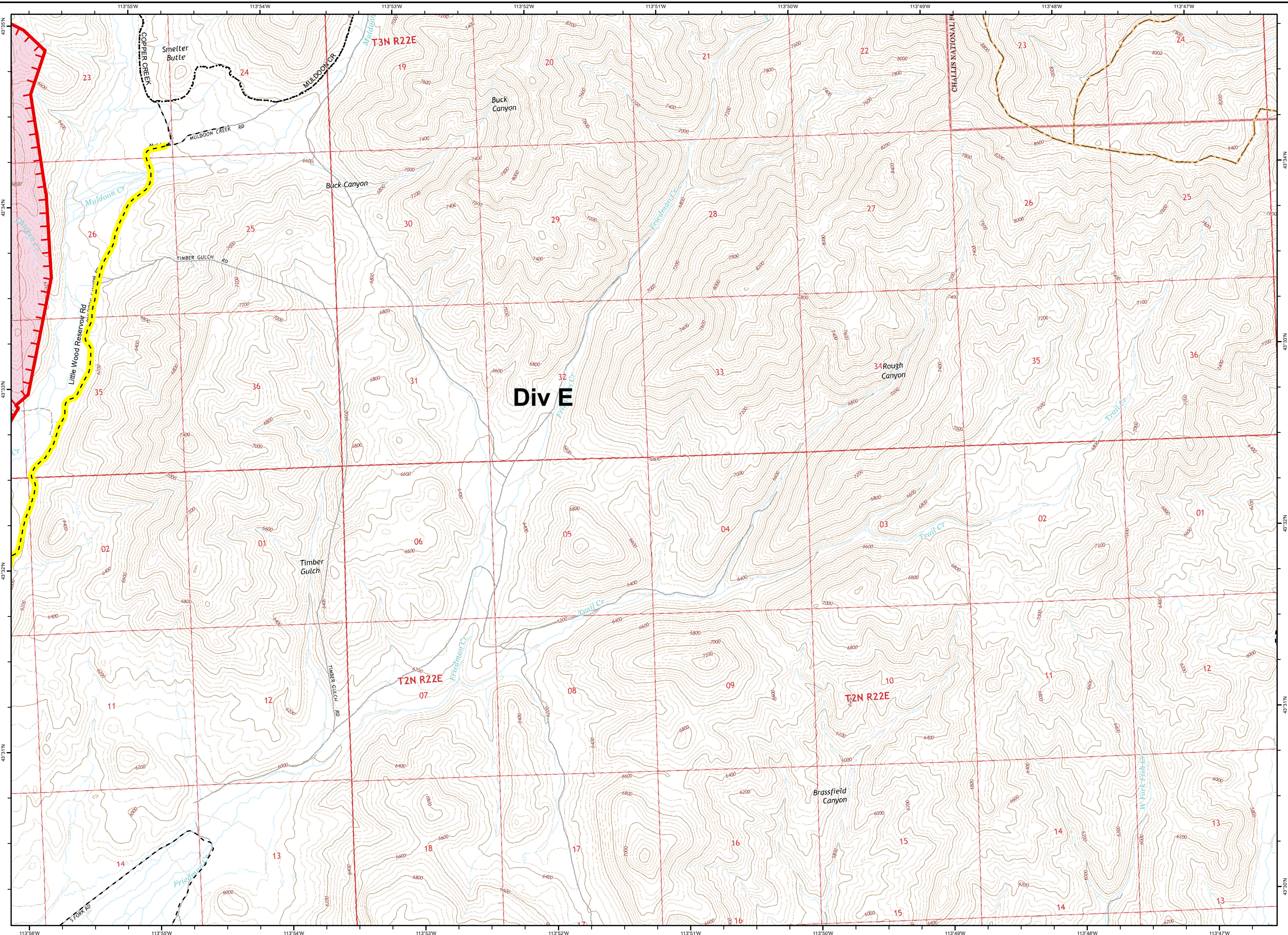
**BRANCH II
Div G**

Sharps Fire - ID-EIS-000247 - Field Map
 August 2, 2018 - Day Shift
 Approx. 53,950 acres as of 8/1/18 1600 hrs

Page 5 of 8
 NAD 83 - UTM Zone 11
 SE - GB#1 - 8/1/2018 - 2153 hrs

- Uncontrolled Fire Edge
- Completed Dozer Line
- Seasonal Road
- Suggested Travel Routes
- Completed Line
- Wildfire Daily Fire Perimeter
- USFS Road Core
- Road as Completed Line

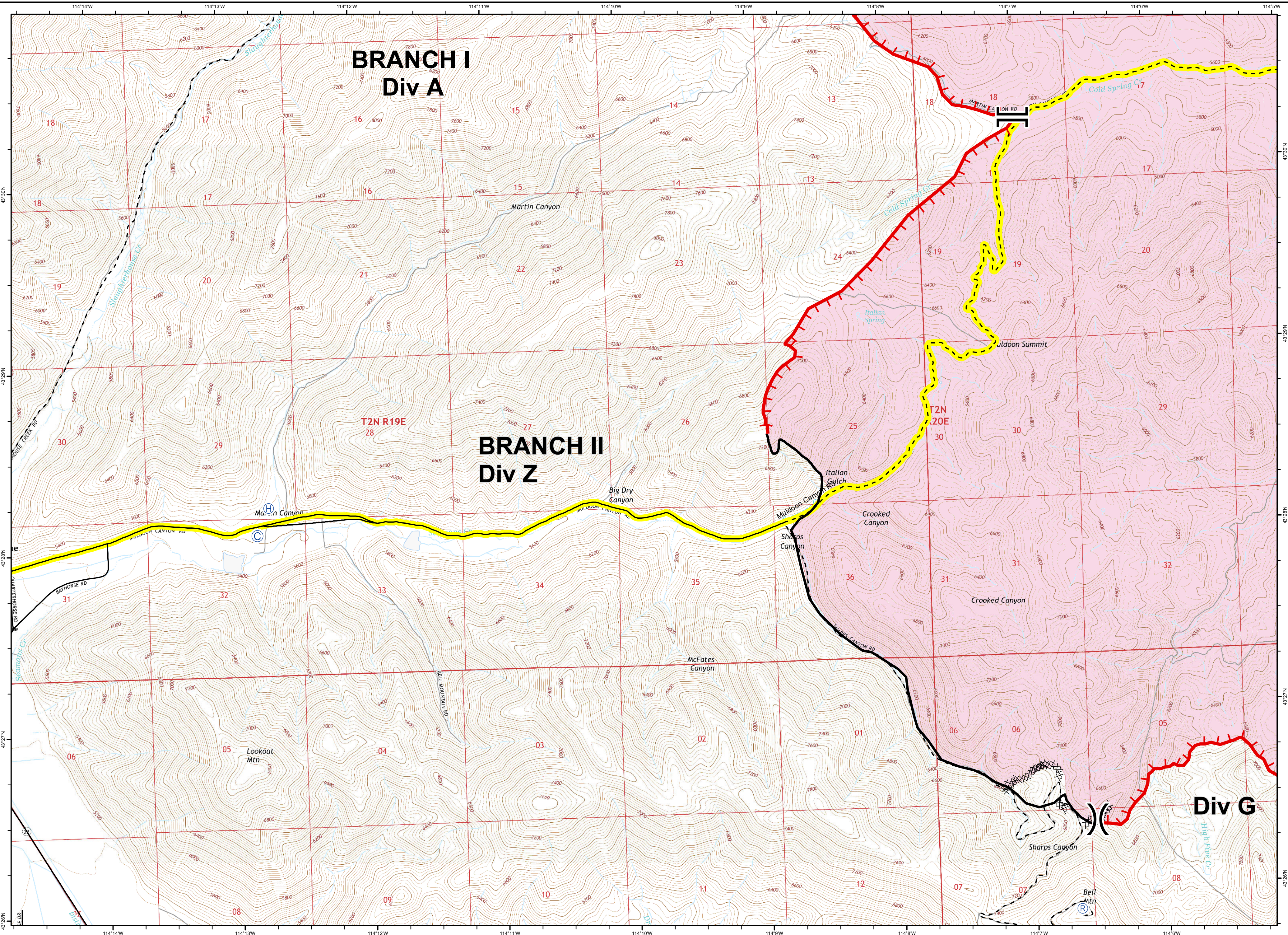




Sharps Fire - ID-EIS-000247 - Field Map
 August 2, 2018 - Day Shift
 Approx. 53,950 acres as of 8/1/18 1600 hrs

Page 6 of 8
 NAD 83 - UTM Zone 11
 SE - GB#1 - 8/1/2018 - 2153 hrs

- ┌ Uncontrolled Fire Edge
- Wildfire Daily Fire Perimeter
- Seasonal Road
- Suggested Travel Routes
- ⋯ USFS Road Core



**BRANCH I
Div A**

**BRANCH II
Div Z**

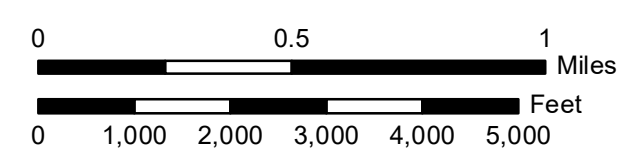
Div G

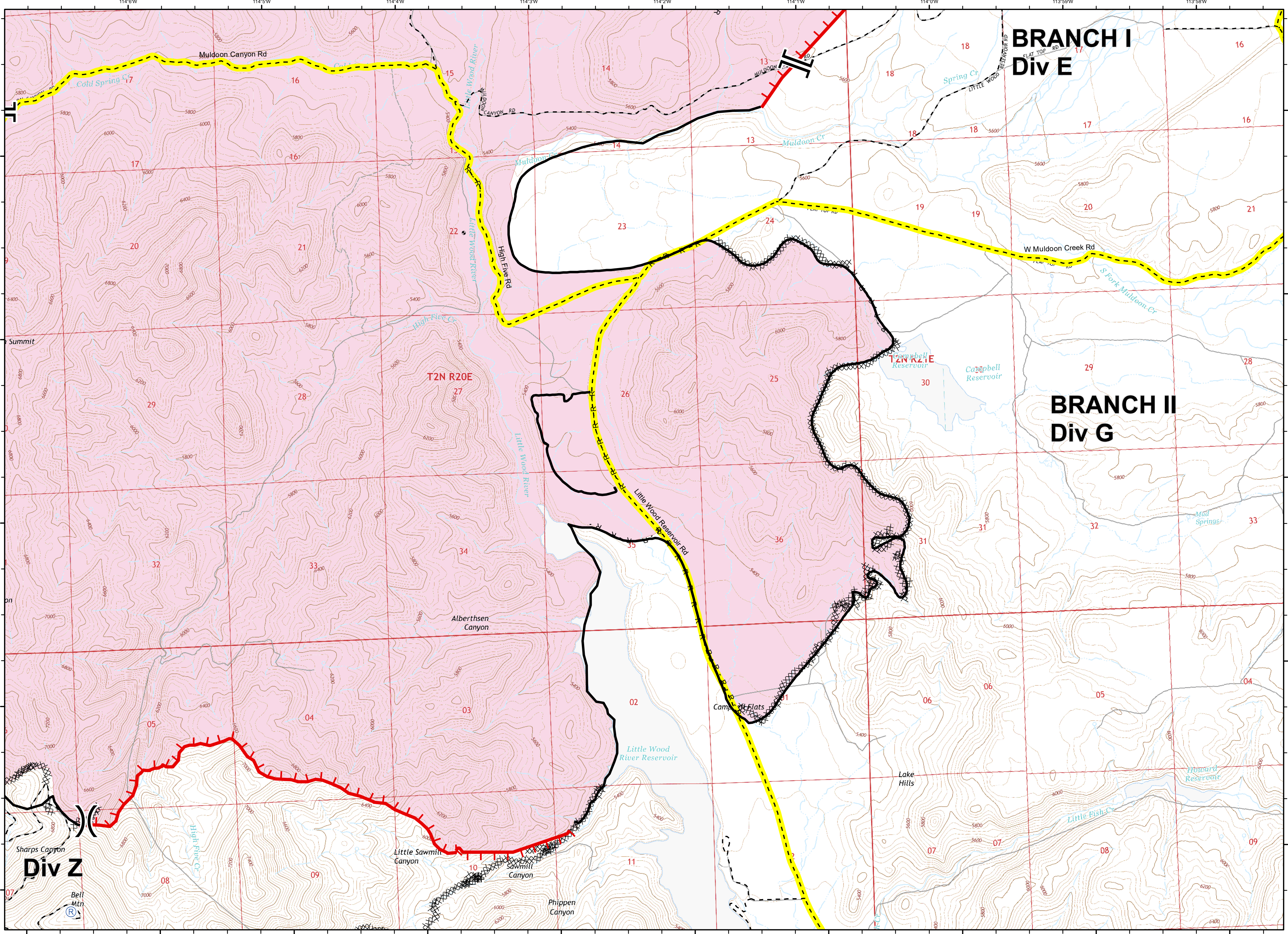
Sharps Fire - ID-EIS-000247 - Field Map

August 2, 2018 - Day Shift
Approx. 53,950 acres as of 8/1/18 1600 hrs

Page 7 of 8
NAD 83 - UTM Zone 11
SE - GB#1 - 8/1/2018 - 2153 hrs

- ┌ Uncontrolled Fire Edge
- Completed Dozer Line
- Local Road
- Suggested Travel Routes
- Completed Line
- Wildfire Daily Fire Perimeter
- Seasonal Road

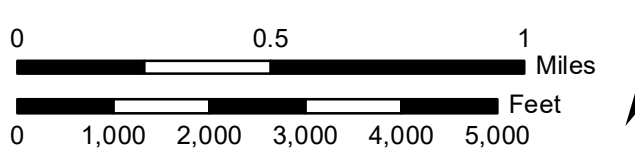




**BRANCH I
Div E**

**BRANCH II
Div G**

Div Z



Sharps Fire - ID-EIS-000247 - Field Map
 August 2, 2018 - Day Shift
 Approx. 53,950 acres as of 8/1/18 1600 hrs

Page 8 of 8
 NAD 83 - UTM Zone 11
 SE - GB#1 - 8/1/2018 - 2153 hrs

- Uncontrolled Fire Edge
- Completed Dozer Line
- Completed Line
- R - R Road as Completed Line
- Seasonal Road
- Wildfire Daily Fire Perimeter
- Suggested Travel Routes