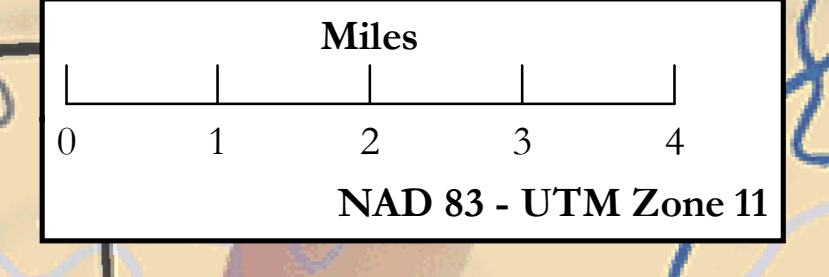


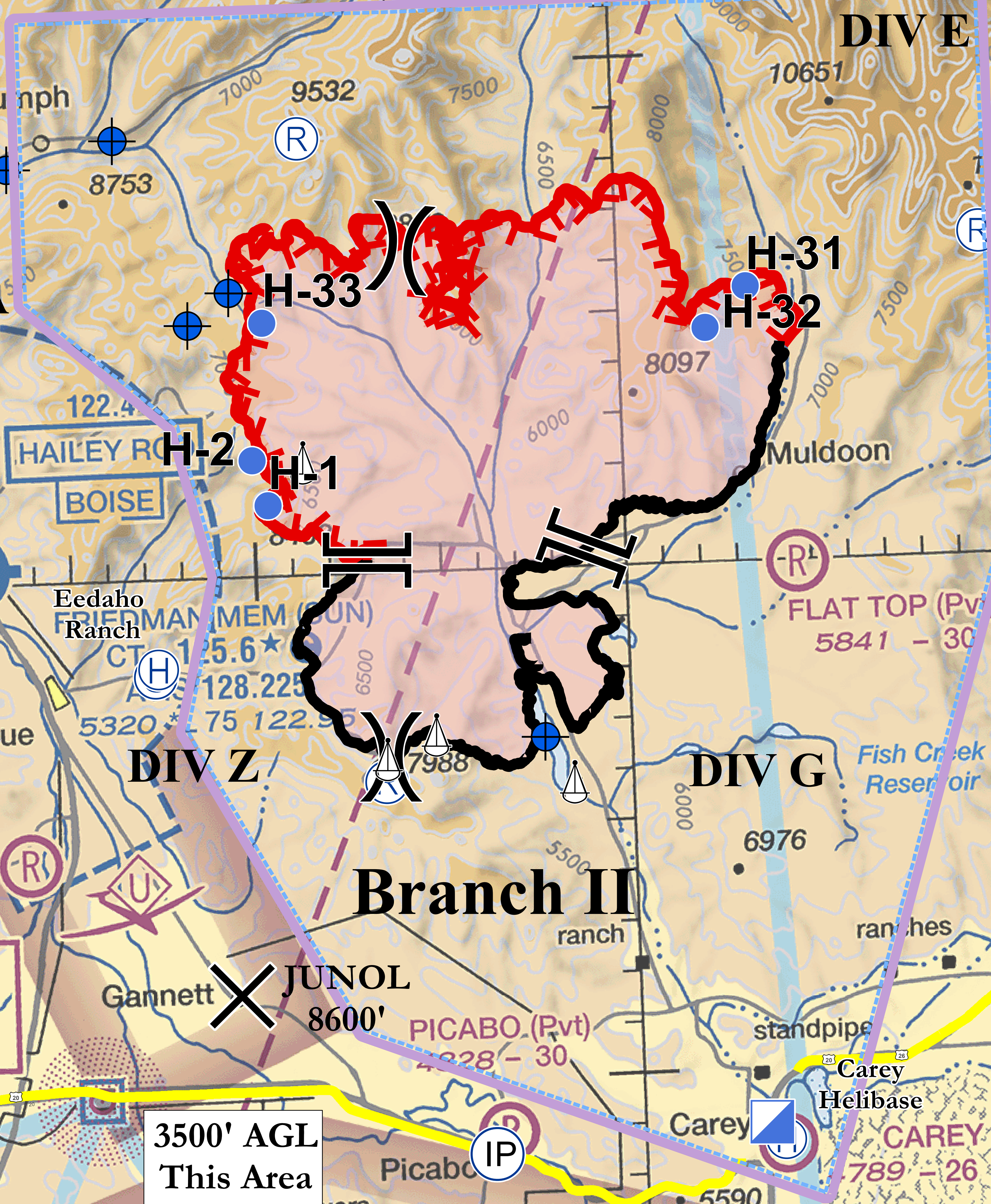
**Sharps Fire**  
**Flight Operations Map**  
 ID-EIS-000247  
 Aug 4nd, 2018 - Day Shift  
 Approx. 63,901 acres as of 8/4/18 0100



- Legend**
- Uncontrolled Fire Edge
  - Completed Line
  - Hwy 20
  - Camp
  - ◆ Dip Site
  - ⊕ Helibase
  - ⊙ Helispot
  - ⊕ Incident Command Post
  - ⊕ Sling Site
  - X Division Break
  - | Branch Break
  - X Junol
  - IP IP Point
  - Wildfire Daily Fire Perimeter



**124 Branch I**      **120**



Type	Label	Latitude	Longitude
Camp	Eedaho Ranch	43° 28.074' N	114° 12.811' W
Dip Site		43° 37.270' N	114° 17.841' W
Dip Site		43° 41.602' N	114° 05.997' W
Dip Site		43° 35.585' N	114° 10.497' W
Dip Site		43° 38.151' N	114° 16.391' W
Dip Site		43° 38.654' N	114° 13.509' W
Dip Site	Heli Base Ponds	43° 34.969' N	114° 11.629' W
Dip Site	Little Wood Dip	43° 26.649' N	114° 02.344' W
Dip Site		43° 35.938' N	113° 55.270' W
Drop Point		43° 29.979' N	114° 00.763' W
Drop Point	DP-1	43° 33.893' N	114° 10.533' W
Drop Point	DP-10	43° 34.344' N	113° 54.718' W
Helibase	Sharps	43° 28.225' N	114° 12.720' W
Helispot	H-1	43° 31.378' N	114° 09.622' W
Helispot	H-2	43° 32.272' N	114° 10.009' W
Helispot	H-31	43° 35.371' N	113° 56.509' W
Helispot	H-32	43° 34.585' N	113° 57.645' W
Helispot	H-33	43° 34.969' N	114° 09.622' W
Repeater	Radio/Cell Tower	43° 25.868' N	114° 06.667' W
Repeater	CMD7	43° 38.579' N	114° 08.518' W
Repeater		43° 36.306' N	113° 50.164' W
Sling Site		43° 26.314' N	114° 06.636' W
Sling Site	Sawmill	43° 26.761' N	114° 05.293' W
Sling Site	Silver State	43° 32.205' N	114° 08.650' W
Sling Site	South Little Wood	43° 25.744' N	114° 01.612' W

**HAILEY**  
 220 HLE  
 DME Ch 25 (108.8)

**3500' AGL**  
 This Area

**All Incident Aircraft - Enter & Exit TFR East of IP (Picabo Airstrip)**  
**Stay south of highway 20, especially south of JUNOL threshold**