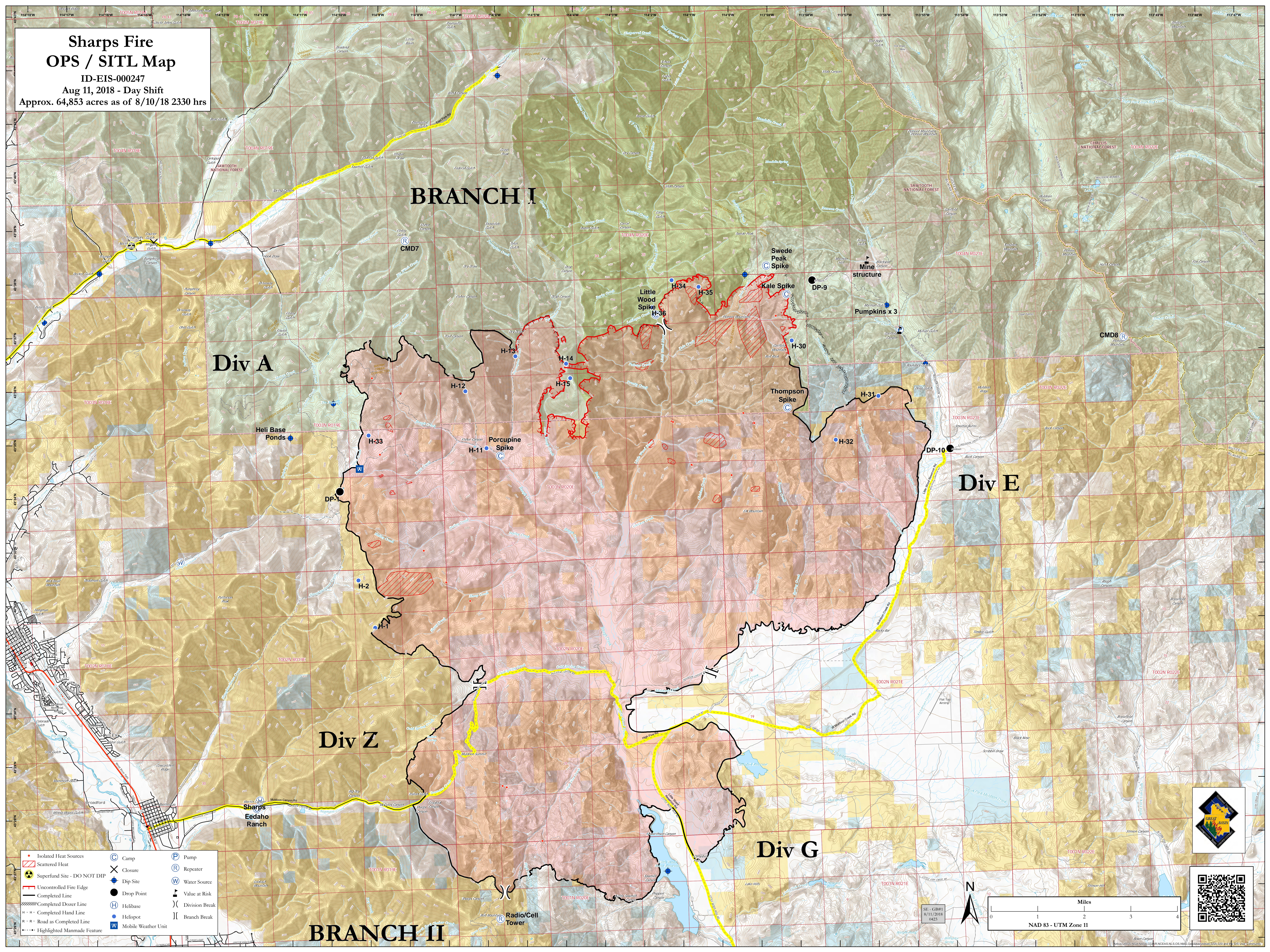
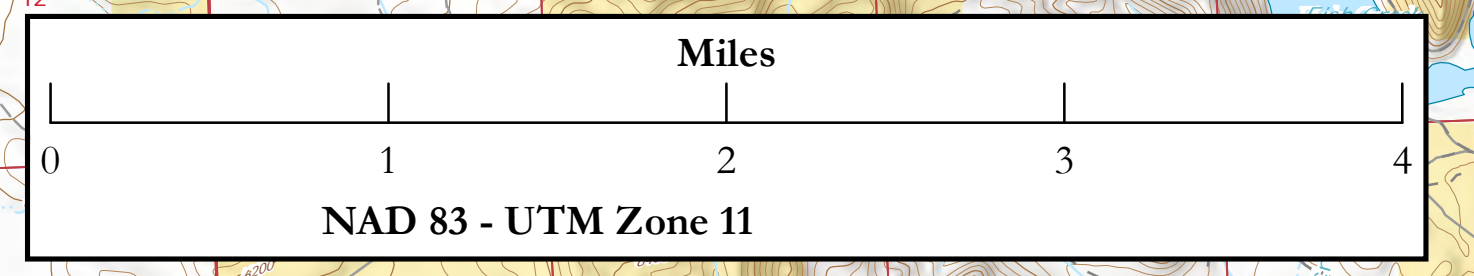


**Sharps Fire
OPS / SITL Map**
ID-EIS-000247
Aug 11, 2018 - Day Shift
Approx. 64,853 acres as of 8/10/18 2330 hrs



- | | | |
|-------------------------------|-----------------------|------------------|
| • Isolated Heat Sources | ⊙ Camp | Ⓟ Pump |
| ▨ Scattered Heat | ⊗ Closure | Ⓜ Repeater |
| ☢ Superfund Site - DO NOT DIP | Ⓧ Dip Site | Ⓜ Water Source |
| — Uncontrolled Fire Edge | ● Drop Point | Ⓜ Value at Risk |
| — Completed Line | Ⓜ Helibase | Ⓜ Division Break |
| ⊗ Completed Dozer Line | Ⓜ Helispot | Ⓜ Branch Break |
| ⊗ Completed Hand Line | Ⓜ Mobile Weather Unit | |
| ⊗ Road as Completed Line | | |
| ⊗ Highlighted Manmade Feature | | |

SE: CH#1
8/11/2018
0423



BRANCH II

BRANCH I

Div A

Div E

Div Z

Div G

Radio/Cell Tower

Sharps
Eedah Ranch

Swede Peak Spike

Mine structure

Pumpkins x 3

Little Wood Spike

Thompson Spike

Heli Base Ponds

Porcupine Spike

CMD8

CMD7