

Sharps Fire Pilot Map

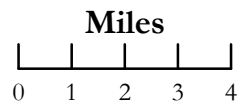
ID-EIS-000247

Aug 11, 2018 - Day Shift

Approx. 64,845 acres as of 8/09/2018 0130 hrs



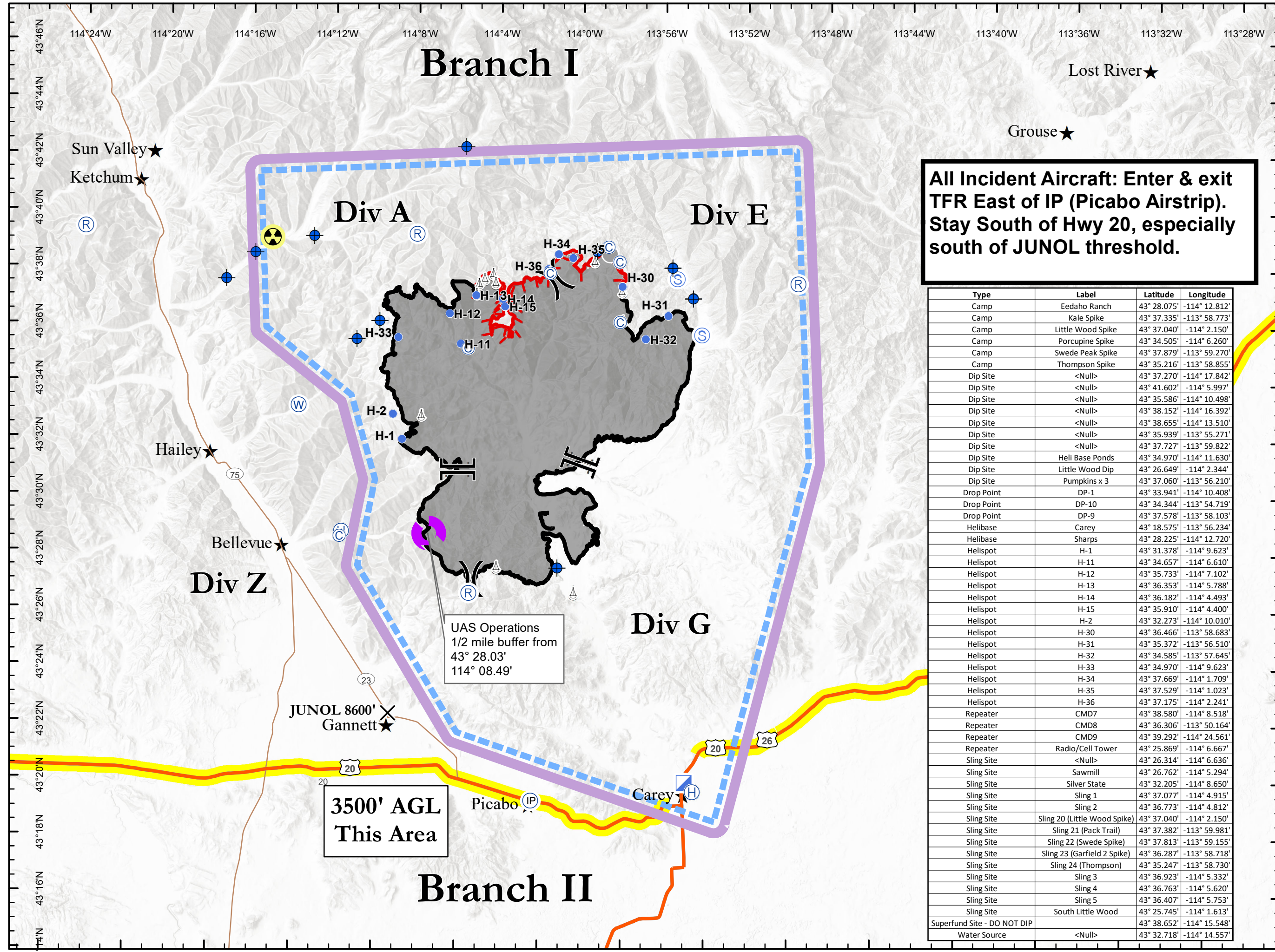
- Superfund Site - DO NOT DIP
- Junol
- IP Point
- Camp
- Dip Site
- Helibase
- Helispot
- Incident Command Post
- Sling Site
- Staging Area
- Water Source
- Other
- Division Break
- Branch Break
- Uncontrolled Fire Edge
- Completed Line



NAD 83
UTM Zone 11



MS - GB#1
8/10/2018
2257



Branch I

Lost River★

Grouse★

Sun Valley★

Ketchum★

Hailey★

Bellevue★

JUNOL 8600'
Gannett★

Picabo IP

Carey H

Div A

Div E

Div Z

Div G

Branch II

All Incident Aircraft: Enter & exit TFR East of IP (Picabo Airstrip). Stay South of Hwy 20, especially south of JUNOL threshold.

UAS Operations
1/2 mile buffer from
43° 28.03'
114° 08.49'

**3500' AGL
This Area**

Type	Label	Latitude	Longitude
Camp	Eedaho Ranch	43° 28.075'	-114° 12.812'
Camp	Kale Spike	43° 37.335'	-113° 58.773'
Camp	Little Wood Spike	43° 37.040'	-114° 2.150'
Camp	Porcupine Spike	43° 34.505'	-114° 6.260'
Camp	Swede Peak Spike	43° 37.879'	-113° 59.270'
Camp	Thompson Spike	43° 35.216'	-113° 58.855'
Dip Site	<Null>	43° 37.270'	-114° 17.842'
Dip Site	<Null>	43° 41.602'	-114° 5.997'
Dip Site	<Null>	43° 35.586'	-114° 10.498'
Dip Site	<Null>	43° 38.152'	-114° 16.392'
Dip Site	<Null>	43° 38.655'	-114° 13.510'
Dip Site	<Null>	43° 35.939'	-113° 55.271'
Dip Site	<Null>	43° 37.727'	-113° 59.822'
Dip Site	Heli Base Ponds	43° 34.970'	-114° 11.630'
Dip Site	Little Wood Dip	43° 26.649'	-114° 2.344'
Dip Site	Pumpkins x 3	43° 37.060'	-113° 56.210'
Drop Point	DP-1	43° 33.941'	-114° 10.408'
Drop Point	DP-10	43° 34.344'	-113° 54.719'
Drop Point	DP-9	43° 37.578'	-113° 58.103'
Helibase	Carey	43° 18.575'	-113° 56.234'
Helibase	Sharps	43° 28.225'	-114° 12.720'
Helispot	H-1	43° 31.378'	-114° 9.623'
Helispot	H-11	43° 34.657'	-114° 6.610'
Helispot	H-12	43° 35.733'	-114° 7.102'
Helispot	H-13	43° 36.353'	-114° 5.788'
Helispot	H-14	43° 36.182'	-114° 4.493'
Helispot	H-15	43° 35.910'	-114° 4.400'
Helispot	H-2	43° 32.273'	-114° 10.010'
Helispot	H-30	43° 36.466'	-113° 58.683'
Helispot	H-31	43° 35.372'	-113° 56.510'
Helispot	H-32	43° 34.585'	-113° 57.645'
Helispot	H-33	43° 34.970'	-114° 9.623'
Helispot	H-34	43° 37.669'	-114° 1.709'
Helispot	H-35	43° 37.529'	-114° 1.023'
Helispot	H-36	43° 37.175'	-114° 2.241'
Repeater	CMD7	43° 38.580'	-114° 8.518'
Repeater	CMD8	43° 36.306'	-113° 50.164'
Repeater	CMD9	43° 39.292'	-114° 24.561'
Repeater	Radio/Cell Tower	43° 25.869'	-114° 6.667'
Sling Site	<Null>	43° 26.314'	-114° 6.636'
Sling Site	Sawmill	43° 26.762'	-114° 5.294'
Sling Site	Silver State	43° 32.205'	-114° 8.650'
Sling Site	Sling 1	43° 37.077'	-114° 4.915'
Sling Site	Sling 2	43° 36.773'	-114° 4.812'
Sling Site	Sling 20 (Little Wood Spike)	43° 37.040'	-114° 2.150'
Sling Site	Sling 21 (Pack Trail)	43° 37.382'	-113° 59.981'
Sling Site	Sling 22 (Swede Spike)	43° 37.813'	-113° 59.155'
Sling Site	Sling 23 (Garfield 2 Spike)	43° 36.287'	-113° 58.718'
Sling Site	Sling 24 (Thompson)	43° 35.247'	-113° 58.730'
Sling Site	Sling 3	43° 36.923'	-114° 5.332'
Sling Site	Sling 4	43° 36.763'	-114° 5.620'
Sling Site	Sling 5	43° 36.407'	-114° 5.753'
Sling Site	South Little Wood	43° 25.745'	-114° 1.613'
Superfund Site - DO NOT DIP	<Null>	43° 38.652'	-114° 15.548'
Water Source	<Null>	43° 32.718'	-114° 14.557'